

Serving more than
146 acres of
Neshoba County

The Fair Times.

Our 39th year
SATURDAY
July 24,
2021

Weather



KADEMI

Scattered Thunderstorms
High: 91 Low: 74

Winds SW at 5 to 10 mph. Chance of rain
50 percent.

What's doin'

TODAY

- 8:30 a.m. – Arts & Crafts, Founders Square
- 7:30 p.m. – PRCA Rodeo, Grandstand
- 8:00 p.m. – Stewdaddy's Saturday Night, Founders Square

Complete schedule, page 12A

Inside



■ Family drives 14 hours to come to Fair, **2C**.

■ Williams family enjoying 'new' cabin, **2D**.

■ Triple M cabin brings 3 families together, **3E**.



Addison Snelling, Ryan Ledbetter, Conner Kriegshauser, Renee Kerr, Denice Hull, Allen Snelling and Deree Webb celebrate the kick-off to the Fair at Cabin 232.

'Hometown' Hardy headlines Fair

By Duncan Dent

Neshoba County native and rising country music sensation Michael Hardy as a boy looked up on the Grandstand stage in wonder. But Tuesday night he is coming home to headline the Fair on that stage as **HARDY**, with the caps as he is known professionally.

It is finally Hardy's time, in his hometown and he is looking just as forward to being his normal Fair self soaking in the kinship Fairgoers enjoy.

"It's surreal. This is going to be a special show," he said. "In a lot of ways, this will be more special than any show we have done. I have seen 100 shows on that stage, and it is finally my

time."

He is scheduled to perform at 8 p.m. Tuesday, but plans to take in some horse racing and other normal activities like everybody else with family and friends.

"They're in love with **HARDY**, and they've been looking forward to watching him play," said Jacob Williams of Cabin 215 about his children's excitement over this year's Fair that began Friday and runs through July 30. (See story, page 2D.)

Hardy said his show will represent a "full circle" moment for his career and is probably No. 1 on his venue bucket list.

Hardy was set to headline last year's iteration of the Fair before it was canceled for only the second time in 132 years. The Fair was cancelled for

four runs during World War II and resumed in 1946.

He has released in the intervening year an album, "A Rock," was nominated for Songwriter of the Year by the Academy of Country Music and his Bulldogs won their first national title — and he was in Omaha.

HARDY most recently announced tour dates with Jason Aldean starting on Aug. 5.

"It has been a lot going on, but it has all been good," he said.

Hardy knows the other artists who will be taking the stage here. He's had several opportunities to meet and hang out with Trace Adkins and Jordan Davis as well as Riley Green, all buddies of

See **HARDY**, page 2A

Hardy

Continued from page 1A

his. "I have known both of them for quite a while," Hardy said. "I have been meaning to text those guys and tell them to be prepared. This isn't an average show."

Despite the buildup to this week's performance, Hardy said he wants to make sure he brings the full energy and experience of all of his shows although he will be adding a song, "No Place like Hometown," off of his first effort, "Hixtape, Vol. 1."

The chorus goes, "Cause' there ain't no place like hometown There ain't a red dirt chert gravel backroad I'd rather drive down

Yeah, I've been everywhere from there to Timbuk Put a lot of country miles on my truck But there ain't no place like hometown, yeah."

The song is about two years old and has rotated off of his latest set list for the past six or eight months. He said it will make its return for the Fair for "obvious reasons."

Even with his headlining show Tuesday evening, the rising country music star hopes to enjoy some of his favorite things about the Fair such the horse races.

"I am excited to play this show, but I am also just excited to go to the Fair like I am every year and that will never change," he said.

He is the son of Mike and Sarah Hardy, formerly of Philadelphia and now of Nashville. The Hardys have the cabin built by his grandparents, Bobby and Joyce Hardy of Philadelphia.



Singer-songwriter Michael Hardy at the 2013 Fair.



HARDY will begin touring with country superstar Jason Aldean on Aug. 5



Front left, Shaun Seales, Ward 4; Mayor James Young; Alderman at Large - James Waltman Back left, James Tatum, Ward 3; Jim Fulton, Ward 2; Justin Clearman, Ward 1

All of us at City Hall would like to welcome you all to the 2021 Neshoba County Fair!

The City of Philadelphia, Mississippi

City Hall • 525 Main Street • Philadelphia, MS 39350-2954 • 601- 656-3612

The Fair Times.

James E. Prince III
Editor and Publisher
jprince@neshobademocrat.com

Steve Swogetinsky
Managing Editor
news1@neshobademocrat.com

Joy Stewart
Advertising
joy@neshobademocrat.com

Duncan Dent
Staff reporter

Payton Bishop
Staff reporter

Audrey Hall
Staff reporter

Contributors: John Lee, Jason Dyess, Coleman Eakes

If you miss a Fair Times
The Fair Times is published daily during the Fair. On Wednesday, The Neshoba Democrat is also delivered. If your area is having problems with Fair Times delivery, please contact us at (601) 656-4000 or text (601) 416-5117. The Fair Times is free and extra copies are available in bright yellow racks at the northeast entrance to the Square and along the road to the new section.

HOW TO CONTACT US

By telephone
Telephone: (601) 656-4000
Facsimile: (601) 656-6379
Text: (601) 416-5117

Web
thefairtimes.com
neshobademocrat.com

E-mail
fairtimes@neshobademocrat.com

Social networking
Facebook: The Fair Times
Twitter: @fairtimes #NCF2016
Instagram: @thefairtimes

Physical address
439 Beacon Street
Philadelphia, MS 39350

Story ideas
601-656-4000
fairtimes@neshobademocrat.com
txt 601-416-5117

News tips are encouraged.

Published by the staff of

THE NESHOBA DEMOCRAT



JENNIFER PHILLIPS, FNP-BC



YOUR HEALTH IS OUR PRIORITY



NESHOPA GENERAL

Neshoba Central School Clinic \ 601.676.0525
Located on the Neshoba Central Elementary Campus
1002 St. Francis Drive \ Philadelphia, MS 39350

Neshoba County General Hospital – Nursing Home complies with applicable Federal civil rights laws and does not discriminate on the basis of race, color, national origin, age, disability, or sex.
ATENCIÓN: si habla español, tiene a su disposición servicios gratuitos de asistencia lingüística. Llame al (601) 663-1200. /CHÚ Ý: Nếu bạn nói Tiếng Việt, có các dịch vụ hỗ trợ ngôn ngữ miễn phí dành cho

Dedicated to Excellence in Healthcare

www.neshobageneral.com



SHANNON KIRKLAND, FNP-C



YOUR HEALTH IS OUR PRIORITY



NESHOPA GENERAL

Philadelphia School Clinic \ 601.656.9183
Located inside Philadelphia Elementary School
406 Stribling Street \ Philadelphia, MS 39350

Neshoba County General Hospital – Nursing Home complies with applicable Federal civil rights laws and does not discriminate on the basis of race, color, national origin, age, disability, or sex.
ATENCIÓN: si habla español, tiene a su disposición servicios gratuitos de asistencia lingüística. Llame al (601) 663-1200. /CHÚ Ý: Nếu bạn nói Tiếng Việt, có các dịch vụ hỗ trợ ngôn ngữ miễn phí dành cho

Dedicated to Excellence in Healthcare

www.neshobageneral.com

Keeping the Fair Hydrated Every Day!

**PUT SOME JUNCTION
IN YOUR FUNCTION**

Call Denise for help planning your next
party or event! 601-750-1685

World's Best Chicken Tenders.

*"But those who drink of the water that I will give them will never be
thirsty. The water that I will give will become in them a spring of
water gushing up to eternal life." - John 4:14*



**WE
CATER!**

Philadelphia • Carthage • Newton • Macon
Oxford • Ridgeland • Union • Scooba • Louisville





**CHARLEIGH, CAROLINE, WARNER, GRAHAM, AND SALLYANNE
ARE READY TO BRING THE FUN BACK TO FAIR 2021**

ANNA CLARE SAXON, DMD

 **AIRPARK**
— FAMILY DENTISTRY —

JOHN ANTHONY STEELE II, DMD

1060 HOLLAND AVE • PHILADELPHIA, MS 39350 • (601) 656-3275

Arts and crafts at Founders Square today

By John Lee

The place to find all kinds of different homemade products for your friends and family at the Fair is the annual Arts and Crafts show at Founders Square today.

This year the show will feature 50 different vendors, all selling their unique products, said Kaye Rowell, a Neshoba County Fair board member and supervisor of the Arts and Crafts show. Vendors are coming from throughout the nation, from states including Georgia, Louisiana, Texas and even New York.

"We have about 70 spots sold, and even though that's lower than previous years, people will be more spread out, and it will be a lot easier for people to get in and out," Rowell said. "We'll have our out-of-state vendors, local vendors and some new vendors coming in, too."

Rowell said the show offers such items as painted signs, T-shirts, pottery from local potters and creams that people have made themselves. She said Moni McKee and her company Moni's Angels from Jackson will also make an appearance.

"Fairgoers can also buy cornhole games, wooden toys for children, earrings, jewelry,



The arts and crafts show features 50 different vendors this year.

official Fair T-shirts and fans," Rowell said. "Come out and enjoy the show. I think there's going to be something out there that everyone can enjoy."

Hilton Spears, a new vendor this year at the Fair, plans to sell hand-crafted wooden bowls, wooden Christmas ornaments, plaques and cutting boards.

"It's my hobby," Spears said. "I own Hilton Spears' Custom Cabinets, and I run a business called 'Bowls by Hilton.' I started back with arts and crafts outside of my busi-

ness around three years ago."

Spears said the Neshoba County Fair is a good venue to sell his products since it is a place where a lot of people come to gather and view his work.

"I've been to the Fair before many times but this is the first year I will be selling my crafts," he said. "I feel like things will go very well. Our products have sold well at other shows and I have a much larger inventory now than I have with other shows. I think the Christmas ornaments are going to

sell the best. We're going to have a good time, and we're looking forward to it."

Jane Kynerd Cell has been selling arts and crafts at the Fair for as long as she can remember.

"The Arts and Crafts show is always a high point for me and my family, who help me out during the Fair," Cell said. "I've made everything from kids' dog tags with cabin numbers so they don't get lost, to ceramic Fair collector's items such as plates, platters, serving dishes, Margarita pitchers and ornaments. I have also created custom tile backsplashes for some cabins, and have painted murals in several cabins as well."

Cell said she loves the Fair, and it is her favorite inspiration for her art.

"During the off-year, my friend Linda Eakes suggested I should paint Fair Santas. I did, and everyone is crazy about them," she said. "I also do custom orders for people who want their cabin painted on a platter, pitcher or vase. Some people like to line their staircases or backsplashes in the kitchen with tiles of their favorite fair scenes."

The Arts and Crafts Show will be on Founders Square around the pavilion and will start between 8 a.m. and 8:30 a.m. The show will remain open until 4 p.m.

MICHAEL GUEST
U.S. CONGRESS

Have a great Fair!

facebook.com/MichaelGuestforCongress @GuestCongress
Instagram.com/MichaelGuestforCongress MichaelGuest.ms

Paid for by Friends of Michael Guest

Feed the whole Family during the Fair.

Dine-In Only Specials throughout the Week.

FAMILY MEALS ONLY \$45.00
Pancake breakfast, Chicken Spaghetti, Chicken Alfredo, Italian noodle salad and Spaghetti
Served with Salad and Bread as a family meal. Feeds 4 and includes 1 gallon of tea.

OUR HOMETOWN
PHILADELPHIA
FAMILY STYLE RESTAURANT

257 West Beacon St. • Philadelphia • 601.650.3689

Johnson busy tending to Marty's place

By Steve Swogetinsky

Don Johnson has lived a busy life, working 32 years at U.S. Motors and serving more than 40 years in the military.

Now, he helps his second cousin, Marty Stuart, with his place in Neshoba County. Johnson stays busy, but right now his attention is focused on enjoying the Neshoba County Fair from his campsite near the first entrance gate coming from town.

"I was born in Philadelphia and have been coming on and off all of my life," Johnson said. "I love it. It's great. Mostly, it's friends. I know a lot of people at the Fair, both on the campgrounds and in the cabins."

Johnson said he goes to the Flea Market, the Veterans Day parade and the car show every year.

"I have an old 1957 Chevrolet pickup from an uncle that I'm going to bring up this year," Johnson said. "I have brought an old jeep before. I am hanging on to the truck. It has 94,000 miles on it. It has the original paint and is in good shape."

Though he has been retired for 11

years, Johnson hasn't been sitting around. He has maintained and made improvements to property belonging to Stuart.

"Now I have two people helping me take care of Marty Stuart's place," Johnson said. "He and I are second cousins. His mother and I are first cousins. Marty's granddaddy and my daddy were brothers."

"After I retired from the military, Marty wanted me to come down and I told him I would come for one year," Johnson said. "As of February, I have been there 10 years. It is less than 3 miles from my house. One of the guys cuts grass and weed-eats. We have planted palm trees and all kinds of plants down there. He has a cabin. We have a shop and kitchen and it is all very nice. It's gated and locked up. That's what I have been doing."

Johnson worked 32 years with U.S. Motors, and 40 years and three months in the military.

"That's National Guard and the last seven years, I was on active duty," Johnson said. "I was 57 years old when I went to Iraq. I came back to Camp Shelby and trained troops a couple of

years.

"I came up on the top of the list as 1st Sergeant at Southaven with the 1687th Transportation Co. I was still working at Shelby and had to drive back and forth. It was a 600-mile round trip. I did two years with them and retired from the military at age 60."

Moving back home brought Johnson back to the Neshoba County Fair in 2010.

"We like to watch the shows and see ever who is performing," Johnson said. "I love the rodeo. We try to get in on everything that is going on. If you miss it, it's over."

Johnson also loves to fish and hunt.

"I killed one deer last year and my neighbors gave me another one," Johnson said. "That was all I needed. We have been cooking deer burgers, deer wraps, deer tenderloins, just about every other night."

"I always have enough deer meat every year," he said. "A lot of my Fair friends come to my shop in October and we do a big deer stew. Between 25 and 30 of us get together. I have it ready when they get there."



Don Johnson

Y'all Have a Great Time at the Fair!

ROGER WICKER IS FIGHTING FOR YOU

- Supporting a stronger, more capable military to defend our nation (*SHIPYARD Act S.1441*)
- Blocking Democrats' attempts to take over our elections
- Holding Big Tech accountable for conservative censorship (*PRO-SPEECH Act S.2031*)
- Supporting job creation and infrastructure like roads, bridges, and broadband internet

Roger
WICKER
U.S. Senator

PAID FOR BY WICKER FOR SENATE

wickerforsenate.com



Hannah Moore, Nijah Lewis, and Maddy Dazet gear up for the Fair!



William and John Scott Boatner enjoy the opening night of rides.

WELCOME BACK TO THE FAIR!

FEED THE FAMILY!

Krystal

10 CANAL PLACE • PHILADELPHIA
601-389-1100

HWY 19 SOUTH • MERIDIAN
601-693-6277

Rose Hill Cemetery Costumed Tour

12th Anniversary Tour

The cast of Rose Hill Company brings Meridian history to life.

SAT., SEPT. 25 • 7-9 P.M.

FREE ADMISSION (DONATIONS ACCEPTED)

OFF EIGHTH ST. • MERIDIAN

Parking available at Calvary Baptist Church for a small fee.
601.479.2483 or 601.482.9752

Funding by Meridian Council for the Arts.

Largest storytelling event in east Mississippi.

Romani burial grounds are encompassed in the cemetery includes the King & Queen of the Gypsies.

Victorian-age cemetery with Meridian stories of history as well as those from throughout the State.

Rose Hill Company wearing period costumes teaches history and heritage through the arts of storytelling and drama.

Heart O' Dixie Triathlon down to a science

By Steve Swogetinsky

By the time most Fairgoers get going this morning, the 41st Heart O' Dixie Triathlon will be finishing up at the Grandstands.

The Heart O' Dixie Triathlon is one of the many traditions associated with the Fair. It is sponsored by the Sertoma Club and is the club's only fundraiser to support local projects.

According to club history, the Philadelphia Sertoma Club was established in 1980. Club members were looking for a fundraiser, and at the suggestion of member Lee Dukes, who was then a member of the Governor's Council on Physical Fitness, the club decided to sponsor a triathlon. At the time, such competitions were new. The first Ironman World Championships began in 1978 in Hawaii and the club used that model to form the foundation of the Heart O' Dixie Triathlon.

Before last year, the Heart O' Dixie was the longest running triathlon in the United States. The triathlon begins with a .5 mile swim at Lake Tiak-O'Khata. The swim is followed by a 27.5-mile bicycle race which progresses through the rolling red clay hills along Highway 15 to Philadelphia. It concludes with a 7-mile run to the Neshoba County Fairgrounds. The awards ceremony usually starts at approx-

imately 11 a.m. at the Grandstands.

While the Triathlon has had some changes over the years, the club has the running of the Triathlon down to a science. It involves coordinating with law enforcement, emergency responders and many volunteers to make the event run seamlessly.

"It's a labor of love," said Race Director Caleb May. "We have an outline of what to do at the race, and we follow that. Everyone has been right on line with us. We appreciate our many volunteers and leading up to the Triathlon, we are making sure they have what they need."

The awards ceremony will begin at approximately 11 a.m. Saturday, July 24.

The Philadelphia Sertoma Cup will be presented to the overall male and female winners. Awards also will be presented to the Top 10 men and Top 10 women. Additional awards will be presented to standard age groups. There will be no duplication of awards.

The Dickey Nowell Memorial Award goes to the top finisher from Neshoba County. It is named in honor of the late Dickey Nowell who competed in some of the first the Heart O' Dixies and who was a friend to many in the Philadelphia Sertoma Club.



The Triathlon begins at Lake Tiak-O'Khata in Louisville.



Bobby's Jewelry
Welcomes You to the
**2021 Neshoba
County Fair!**

SPECIALIZING IN BRIDAL JEWELRY SINCE 1998
New Jewelry and Estate Jewelry

Come see us for all your jewelry needs!

Bobby's
JEWELRY

Specializing in Bridal Jewelry since 1998

201 W. Beacott St. Philadelphia, • 601-656-9708

Bobby M. Smith and Bobbie Kay Waddell, Owners



Jacob Hughes, Justin Pitts, Trent Rideout, Bubba Crapps and Zack Allen build a porch for a cabin.



Seated from left to right: Obbie Riley - District 5, Kevin Cumberland - District 2, Keith Lillis - District 1, Back row from left to right: Kevin Wilcher - District 4 and Kinsey Smith - District 3

WELCOME TO
**PHILADELPHIA
 & NESHOPA
 COUNTY**

A GREAT PLACE TO VISIT,
 A GREAT PLACE TO CALL HOME.

THE NESHOPA COUNTY
BOARD OF SUPERVISORS

Second round of rodeoing tonight at 7:30

If you are looking for a bucking good time, don't miss the second night of the Harper and Morgan PRCA Rodeo which is being held at horse track on the Fairgrounds.

A big Fair crowd always turns for the rodeo. If you missed the first night, don't miss tonight. The top ranked cowboys and cowgirls from across the southeast come to the Fairgrounds every year, seeking cash points in the Professional Rodeos Cowboys Association standings.

Admission is covered when you buy a ticket to the Fair. The show starts at 7:30 p.m.

Rodeo night always starts off with bull riding and it closes with bull riding.

The rodeo events will also include bareback bronc riding, barrel riding, the calf scramble, saddle bronc riding, steer wrestling, team roping and down roping.

There will also be a lot of bantering back and forth with the rodeo clown and the announcer.



More than 80 cowboys are expected to participate in this year's Rodeo.

Best wishes for a safe, fun and healthy Fair Week!

Rush Medical Clinic Philadelphia

A division of Laird Hospital

Clinic hours

Monday–Friday 8 a.m.–6 p.m.

Saturday 8 a.m.–12 noon

**Walk-ins
Welcome!**



Providers

Dr. Krista Boyette • Dr. Patrick Eakes • Dr. Chris Webb • Kayla Barnett, FNP

For appointments:
601.656.6921

Rush

1106 Central Drive | Philadelphia, MS 39350 | rushhealthsystems.org

SATURDAY ★ JULY 24, 2021

Midway open 12:00 p.m. – 1:00 a.m. Mitchell Bros. and Sons Amusements.
U.S. Post Office, Neshoba County Fair Station, Open 12:30 p.m. to 3:30 p.m.

- 6:30 a.m. **Philadelphia Sertoma Club 42nd Annual "Heart O' Dixie Triathlon"**
Begins at Lake Tiak O'Khata in Louisville, MS and finishes at the Grandstand.
Sponsored by Airpark Family Dentistry, Alfa Insurance – Lee Robertson Agency, The Citizens Bank of Philadelphia, Prince Oil / The Junction, Neshoba General Hospital, Performance Therapy, Philadelphia Athletic Club, Philadelphia Security Insurance, Sta-Home, Triple Commer Logging LLC, Woody's General Store of Noxapater, Yates Construction
- 8:30 a.m.-4:00 p.m. Arts and Crafts Market- Founders Square
- 8:00 a.m. – Noon **NESHOPA COUNTY FAIR FARMERS MARKET SELLING HOMETGROWN VEGETABLES AND PRODUCE IN THE LIVESTOCK SHOW ARENA**
- 9:00 a.m. Free Children's Petting Zoo – Livestock Area
Presented by G & J Traveling Petting Zoo
- 11:30 a.m. Philadelphia Sertoma Club "Heart O' Dixie Triathlon" Awards Program – Grandstand
- 7:30 p.m. **HARPER & MORGAN PRCA RODEO** – Grandstand
- 8:00 p.m. **Stewdaddy's Saturday Night at the Fair** – Founders Square
Local Gems & Treasures Revealed - Featuring Local Radio Host Jeff Stewart
- 10:00 p.m.-1:00 a.m. Dance – Music by **Dr. Zarr's Amazing Funk Monster** – Grandstand
- 1:00 a.m. **MIDWAY AND CONCESSIONS CLOSE**

The EXHIBIT HALL is open daily 8:00 a.m. to 10:00 p.m. featuring Field Crops, Garden Exhibits and Arts and Crafts.



Charley Mowdy, Daniel Skipper Austin Skipper and dog Asher are moved in and ready for the Fair.



Welch Forest Products would like to welcome all of you to the 2021 Neshoba County Fair!



"Buyer of all types of timber and land."

UNION, MS • 601-774-8200

Woodstock Furniture **NEW PHILADELPHIA** **VALUE CENTER** **LOCATION**

**THESE
 ITEMS
 IN STOCK**

FAIR SPECIALS

**THESE
 ITEMS
 IN STOCK**

NEXT DAY DELIVERY + 24 MONTHS FREE FINANCING!



Reclining Sofa & Loveseat \$1497*



Queen Bed \$897* / King Bed \$1097*



Table & 6 Chairs \$597*



Reclining Sofa & Loveseat \$1797*



Queen Mattress \$297* / King \$397*



Sectional \$897*



Big Man Recliner \$597*



Queen, Full or Twin Bed, Dresser & Mirror \$497* / King + \$99*



Sofa & Loveseat \$1097*



Rocking Recliner \$497*

**"Wishing Everyone A
 Safe & Happy Fair!"**

Offer valid through 8/22/21 or while supplies last. No guarantee exists that "In Stock" items are always in stock due to fluctuations in sales volume. Extended financing over 24 months does not qualify for special pricing. Cannot be combined with other offers. Mattress prices are for the mattress only and do not include foundation or box spring. Mattress foundations are available for purchase. Free items available while supplies last. Next day in carton to first floor doorstep delivery on new purchases made before 2:00 PM CST of in stock items being delivered inside Neshoba County, MS. Sundays excluded. Delivery time frame subject to availability. Showroom hours may vary due to Covid-19. Although every precaution is taken, occasionally errors do occur in print. We reserve the right to correct any such error.



Woodstock Furniture **VALUE CENTER**

Open 7 Days A Week!

Mon-Sat 10am-7pm | Sun 1pm-5pm

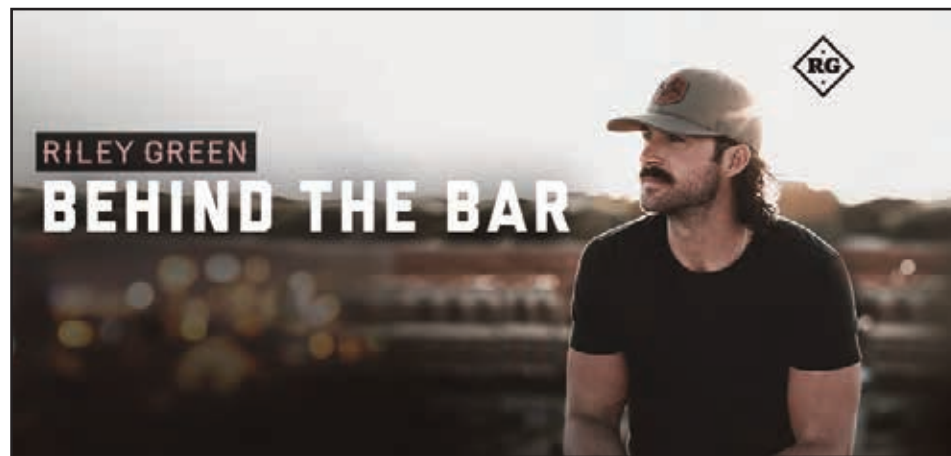




Trace Adkins
Wednesday



Jordan Davis
Thursday



Riley Green
Friday

Adkins, Davis, Green music round out events

By Duncan Dent

Neshoba County's country music superstar HARDY is the highlight of this year's main stage entertainment lineup that includes country music stars Trace Adkins, Jodan Davis and Riley Green at this summer's Neshoba County Fair.

Here is the lineup for the 2021 Neshoba

County Fair:

- HARDY, Tuesday, July 27
- Trace Adkins, Wednesday, July 28
- Jordan Davis, Thursday, July 29
- Riley Green, Friday, July 30

Adkins is a Grammy-nominated and Academy of Country Music award-winning artist with decades of albums, songs and performances under his belt from his 1996 album Dreamin' Out Loud

to his most recent album, 2017's Something's Going On.

Jordan Davis has had two U.S. Country Airplay No. 1 singles with 2017's "Singles You Up" and 2019's "Slow Dancing in a Parking Lot."

Riley Green is a recording artist with one album under his belt, 2019's Different Round Here, which had a song go to No. 1 on the Canadian Country charts.

The Fair runs from July 23 to July 30. Each day is packed with entertainment.

Friday, July 23

Afternoon music will be provided by home-grown Neshoba County Musicians at the Pavilion on Founders Square from 1 p.m. to 6 p.m.

At 9:30 p.m. music will start again at the Pavilion. See **EVENTS**, page 15A

WELCOME BACK TO THE NESHOBA COUNTY FAIR!



Events

Continued from page 14A

ion with dance music by Southbound. The band is set to play until 12:30 a.m.

The local musician lineup features more than a dozen artists and will be emceed by Daniel Sharp and Krissy Long.

The afternoon lineup is as follows:

• 1 p.m.- a trio of Daniel Sharp, Josh Sansing and Kelly Sullivan

- 1:15 p.m. Justin Snow
- 1:40 p.m. Laken Winstead
- 1:50 p.m.. Daniel Sharp
- 2:20 p.m. Zachariah Lloyd
- 2:50 p.m. Mary Mars
- 3 p.m. Garrett Johnston
- 3:20 p.m. Ben McDaniel
- 3:50 p.m. Moonpie Curtis
- 4:30 p.m. Groove Johnson
- 5:15 p.m. Mitch Presley

Saturday, July 24

Entertainment at the Pavilion on the Square the first Saturday of the Fair begins at 8 p.m. with Stewdaddy's Saturday Night at the Fair. The show is said to feature "local gems and treasures revealed" and will feature local radio host Jeff Stewart.

At 10 p.m. the fun continues at the Grandstand for the musical stylings of Dr. Zarr's Amazing Funk Monster until everything shuts down at 1 a.m.

Sunday, July 25

On Sunday the music is set to start at 1 p.m. with a half-hour of Bluegrass music from the Vernon Brothers at the Grandstand.

At 1:30 p.m. will be the annual Children's Concert at the Pavilion. The music will be led by Kevin Cole. Children are encouraged to bring pots, pans, horns, drums and other instruments to participate in the joyful noise of the band's music.

The Pavilion on the square will be the sight of worship throughout Sunday opening with a 9:30 a.m. worship service led by the Rev. Scott Boatner and God's House.

It will begin again with a concert by the First Baptist Church Choir of Philadelphia at 6:30 p.m., which will be followed by a gospel music concert emceed by Bob Breland.

It will feature music the Cornerstone Quartet and One Way.

Cornerstone includes Jonathan Ferguson, Rusty Walton, Michael Wells and Thomas Knight. One Way includes Casey Cappleman, Brock White, Jeff Hollingsworth and Mark Bradbury.

The NCF 120 youth and college worship service will be at the Cattle Show Barn coordinated by Phillip Prince.

Sunday also kicks of the week's slate of horse and harness racing.

Monday, July 26

Monday's slate of entertainment starts on the Square with the East Central Community College who will host a variety program at 1 p.m. at the Pavilion.

That evening's dance music band kicks off at 9:30 p.m. with Hairicane under the Pavilion until 12:30 a.m.

Monday has a slate of other offerings including the clothesline art exhibit on the square, a Balloon Glow at 7 p.m. followed by the opening ceremonies at 7:30 at the Grandstand and the Miss Neshoba County Fair Pageant at 8 p.m.

Tuesday, July 27

Tuesday marks the first night of music at the Grandstand with Hardy headlining at 8 p.m.

Earlier in the day, the Neshoba Central High School Big Blue Band will open Tuesday's festivities with a concert on the Square at 9:15 a.m.

They will be followed by recognition and memorial service for veterans at 10 a.m. before the 11 a.m. Hometown Proud slate of performances with Kinsey Goldman as master of ceremonies.

NCHS Band Director Daniel Wade will lead his band back onto the Square at 1 p.m. for another performance.

After Hardy's 8 p.m. Grandstand headline performance, another night of dance music will commence at the Pavilion with Lovin' Ledbetter taking the stage from 9:30 p.m. to 12:30 a.m.

Wednesday, July 28

The NCHS band will again open the day on the Square with an 8 a.m. concert. With another performance at the Grandstands scheduled for 1 p.m. after the morning slate of political speaking.

That afternoon at 3 p.m. will be the Youth Talent Contest. Registration runs from 1:45 p.m. to 2:45 p.m.

The Trace Adkins Show will headline the evening at the Grandstands at 8 p.m. followed by local band Pinnishook who is set to play the Pavilion starting at 9:30 p.m.

Though the band will stop playing at 12:30

a.m. and the Midway will close at 1 a.m., the music does not stop that evening. Dr. Laura Bryan, Patt Fielder and Dr. Joe Jordan will lead the A.J. Yates Jr. Memorial Late Night Sing, a steadfast tradition for many fairgoers, at the Pavilion starting at 1 a.m.

Thursday, July 29

The Big Blue band will bookend another morning of political speaking with an 8:30 a.m. performance on the Square and another concert at the Grandstand at 1 p.m.

At 2 p.m. Sid Salter will lead a discussion with Mississippi State University Head Coach Mike Leach and the University of Southern Mississippi Head Coach Will Hall. The talk will be broadcast live on SuperTalk Mississippi.

Jordan Davis will headline the Grandstand at 8 p.m. that evening followed by dance music from Mustache the Band starting at 9:30 p.m. on the Square. They have been described as a '90's country party band."

Friday, July 30

Before the Fair closes at midnight, Friday still hosts a full slate of entertainment starting with Bluegrass music from the Vernon Brothers returning to the Grandstand at 12:30 p.m.

The afternoon will feature the culmination of that week's slate of racing before Riley Green takes the Grandstand stage at 8 p.m.

The Jason Miller Band will close out music at the Fair on Founders Square from 9:30 a.m. to 12 a.m. for the last night of dance music.

THANK YOU

Thank you for the opportunity to serve in the MS Senate over the last six years. During this time, I have proudly supported legislation to lower taxes, to support small businesses, to defend our second amendment rights, along with the right to life and religious liberties. I am humbled by the privilege to continue serving you, and I will keep working hard to protect the conservative values of the people of Mississippi — for my family and for yours!

— Senator Jenifer Branning



JENIFER
BRANNING
S T A T E S E N A T E





TATE REEVES



Governor

**“The Neshoba County Fair is one of our family's favorite traditions,
and we are thrilled to be back this year!”**

Paid for by Tate for Governor

TateReeves.com

 fb.com/tatereeves

 [@tatereeves](https://twitter.com/@tatereeves)

 [@tatereeves](https://instagram.com/@tatereeves)

Meet The Fair Times reporters

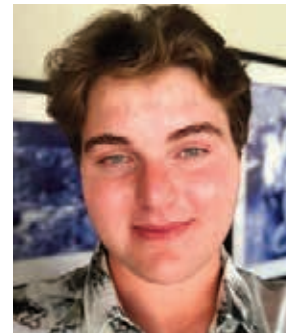
Payton Bishop



Payton Bishop

Payton Bishop of Waynesboro, a student in the School of Journalism at The University of Mississippi, began with a summer internship at the Wayne County News in 2019 and later with The Fair Times. He is the son of Chris Bishop & Clara-Ruth Pitts. The Wayne County High School graduate will be a senior at Ole Miss in the fall where he is a member of Beta Theta Pi fraternity and will continue writing for The Daily Mississippian, the student newspaper.

Coleman Eakes



Coleman Eakes

Coleman Eakes of Philadelphia is the son of Dobie and Raye Carol Eakes. He is a 2020 Neshoba Central graduate and is currently enrolled at East Central Community College majoring in business administration. Eakes has been interning with The Neshoba Democrat this summer and said, "I am enjoying this opportunity to meet all kinds of new people and experience new things!"

Sarah Watkins



Sarah Watkins

Sarah Kathryn Watkins of Philadelphia is the daughter of Kimberly Smith Booker and the late Ronnie Watkins. She graduated from Neshoba Central in 2015 and earned an associate of art degree from East Mississippi Community College and earned a bachelor's degree in communications with a minor in film studies from Mississippi University for Women in April 2021.

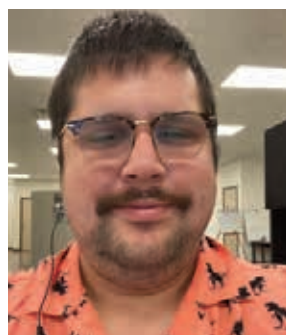
Audrey Hall



Audrey Hall

Audrey Hall of Ridgeland has covered the Fair for The Fair Times since 2016. She graduated from the University of Mississippi with her BA in English and the University of Florida with an MFA in creative writing. This fall she will attend the University of Alabama for her MA in English. Her parents are John Robert and Dawn Trotti Hall.

Duncan Dent



Duncan Dent

Duncan Dent is the senior reporter at the Madison County Journal. He writes about the pleasures of drink and food culture, shares recipes in his Madison County Magazine column and does general reporting for The Neshoba Democrat. He attended Mississippi State University where he worked on The Reflector, the student newspaper. This is his fifth year on the ground covering Mississippi's Giant House Party. His favorite part of the Fair is watching the dust get kicked up during the horse races.

John Lee



John Lee

John Lee of Ridgeland is a staff reporter for the Madison County Journal and The Neshoba Democrat. He graduated from St. Joseph Catholic School in 2016 and Mississippi State University in 2020 with a bachelor's degree in communications.



Susan Windham, Don Windham, Jack Windham, Wendy Windham, baby Parker Windham and Alana Pilgrim are excited to move into their cabin built last year.



Stephen Nicholson, Lindsey Nicholson, Christian Nicholson, Willis Burks, Kay Burks, Caroline Nicholson, Ashley Rhodes and Justin Rhodes pose for a pic.

(L to R): Tinsley Rounsaville (5), Ty Rounsaville (3), Mary Clayton Byars (4), and Ava James Byars (9)

From our family to yours, we hope you have a safe and happy Fair!

Byars FURNITURE
ESTABLISHED IN 1953 | PHILADELPHIA MISSISSIPPI

319 BYRD AVENUE • 601-656-1802 • WWW.BYARSFURNITURE.COM

God's
House

VISIT US AT 256 GUM ST PHILADELPHIA, MS

WWW.GODSHOUSEMS.COM

LIKE US ON FACEBOOK "ATTENDING GOD'S HOUSE!"

HAVE A SAFE
& BLESSED FAIR!

JOIN US FOR CHURCH
SUNDAY JULY 25TH
9:30AM
AT THE PAVILION

PASTORS
SCOTT & KARI BOATNER

SERVICE HOURS
SUNDAY WORSHIP: 11:00AM
WEDNESDAY NIGHT: 6:00PM



Kent Stribling and Taylor Stribling relax on their cabin porch after cleaning their cabin.



Emmye Tiemann, Brantley Tiemann and Georgia Drager get ready to walk the Fairgrounds.



Maggie and Emma wish everyone a great Fair!

WELCOME BACK!

WE WOULD LIKE TO WISH YOU ALL A SAFE AND HAPPY FAIR!

AMY K. TAYLOR
LAW FIRM

504 CHURCH AVENUE • PHILADELPHIA, MS
601.656.7301

B AND G
EQUIPMENT

LOGGING EQUIPMENT FULL SERVICE DEALER

10430 ROAD 383
PHILADELPHIA
(601) 656-7011
www.bandgequip.com

Dance bands to play at Pavilion

By Duncan Dent

When the sun goes down at the Neshoba County Fair, the dancing heats up under the Founders Square Pavilion.

The Fair Board has exciting bands lined up to play for the nightly dance this year with a good mix of local and regional acts.

The locals that make up the band Southbound kicked things off on Friday. Philadelphia native Jeff Stewart and bandmates Andy "Cookie" Henderson, Nic Massey, Joe Latham and Clint Marshall like to riff off of each other as they entertain crowds with classic and Southern rock n' roll.

Doctor Zarr's Amazing Funk Monster, playing two different decades worth of music — and then some — will take the grandstand at 10 p.m. Saturday.

On Monday, hard-rocking hair-metal cover band Hairicane will entertain revelers starting at 9:30 p.m.

The band formed several years ago in Mississippi to pay tribute to



the band

party bands such as Ratt, ACDC, Bon Jovi, Guns N Roses, Poison and many more from the '80s era. Their eclectic playlist includes some classic rock, dance and country, so

they are guaranteed to please any crowd.

Mixing the power of classic and 1980s rock with the soul of Southern Rock, Lovin Ledbetter has cre-

ated a sound that is making waves across the live music scene. With three vocalists among their team of gifted and seasoned musicians, they command the stage and capture the

audience with their energy, talent, and variety. They perform Tuesday at 9:30 p.m.

Local Southern Rock band Pin-nishook will perform at 9:30 p.m. Wednesday. The five-piece, four-guy-and-one-girl rock band from Philadelphia has been showing up and showing out since 2013 with jaw-dropping guitar solos, vocal growls and rhythm peaks sure to get anyone dancing.

Nineties country party group Mustache The Band will perform Thursday night starting at 9:30 p.m. and local country group The Jason Miller Band will close the Fair out with a show Friday night from 9 p.m. to midnight.

Mustache promises a trip back to the '90s when sleeveless tank-top shirts, mullets and mustaches ruled the landscape, and Jason Miller Band lead vocalist and frontman Jason Miller has assembled some of the best artists in the southeast who play country, with a few other standards from other genres thrown in as well.



**ALL AMERICAN
—PAWN—**

Quick Ca\$h & Amazing Deals!

Happy Fair Week!



**380 W. Main St., Philadelphia, MS 39350
601-656-7784**

**Welcome to our Fair City
& The Neshoba County Fair!**

Special Events!

UPCOMING SUMMER & FALL EVENTS

July 14-17 ~ Choctaw Indian Fair

July 23-30 ~ Neshoba County Fair

October 16 ~ HAM JAM!

Arts & Crafts Festival



**Community
Development
Partnership**

*It's Fun for the
whole Family!*

**256 W. Beacon Street
Philadelphia, MS**

Chamber Industrial Development Main Street Tourism

601-656-1000 • www.neshoba.org

NESHOBA MEDICAL ASSOCIATES

YOUR HEALTH IS OUR PRIORITY



Internal Medicine \ 601.656.6116
Family Medicine \ 601.656.1001
Pediatric Medicine \ 601.656.9900

N
NESHOBA
GENERAL

All services located on the NG Campus
in the Medical Pavilion
513 E. Hospital Road \ Philadelphia, MS 39350

Neshoba County General Hospital - Nursing Home complies with applicable Federal civil rights laws and does not discriminate on the basis of race, color, national origin, age, disability, or sex.
ATENCIÓN: si habla español, tiene a su disposición servicios gratuitos de asistencia lingüística. Llame al (601) 663-1200.
CHÚ Ý: Nếu bạn nói Tiếng Việt, có các dịch vụ hỗ trợ ngôn ngữ miễn phí dành cho bạn. Gọi số (601) 663-1200.

Dedicated to Excellence in Healthcare

www.neshobageneral.com



Donna Klein, Magan Pullin and Sue Graham paint their cabin.

NOW ACCEPTING NEW PATIENTS

CLEANINGS AND EXAMS,
RESTORATIVE DENTISTRY,
ORAL SURGERY, ROOT CANALS,
BOTOX INJECTIONS,
AND DERMAL FILLERS



PHILADELPHIA FAMILY DENTAL

Sarah B. Skinner, DMD.





Pat Mioton, Will Beddingfield, Chuck Barfoot and Debbie Beddingfield chat on the porch swing.



Taylor Ward, Blakeleigh Ward, Eli Ray and Memorie Warren catch up at Cabin 295.

Thank you
for a great
first year!



COLD WATER CAMP
PHILADELPHIA, MS
EST. 2020
www.coldwatercampneshoba.com



OPEN THRU SUMMER 2022


MUSIC TELEVISION®
MTV TURNS FORTY
PRESENTED BY THE MALCOLM M. MALCOLM FOUNDATION



NEW HOURS	CONTACT US
MONDAY - WEDNESDAY: CLOSED	662.441.0100
THURSDAY: 10 AM - 5 PM	WWW.GRAMMYMUSEUMMS.ORG
FRIDAY: 10 AM - 5 PM	800 W SUNFLOWER RD.
SATURDAY: 10 AM - 5 PM	CLEVELAND, MS 38732
SUNDAY: 12 PM - 3 PM	

Biscuits rule the land at the Boyles' cabin

By Sarah Watkins

The swear jar is one of the Boyles family's Fair traditions, and they have lots of jokes surrounding it.

Tatum Salter's favorite part of the Fair is going to the pageant with her mother and they also enjoy doing DIY projects on the cabin before the Fair starts.

Tina Boyles grew up attending the Neshoba County Fair. Her husband, Jon Boyles, grew up in Louisville and was not allowed out to the Fairgrounds until he got older.

The Boyles' purchased their Cabin 899 after the Fair in 2016.

"We gutted the downstairs, and the outdoor porch had red burgundy carpet before," Tina Boyles said.

The Boyles added new windows and did other accommodations to make their Fair cabin feel more like home.

Tina Boyles' children Tatum, Tanner and Jon Byars Salter have a favorite meal that their mom will cook during the Fair.

"The chicken Alfredo is my favorite," Jon Byars Salter said.

The family considers themselves nighttime Fairgoers because they like all the activities of the night and the entertainment.



Jon Boyles, Tatum Salter, Tina Boyles and Jon Byars Salter

HEAD
AUCTIONS & REALTY

**HAROLD T'S
TRADING POST
EXCESS INVENTORY
LIQUIDATION**



**Starts: Fri, Aug 13
Ends: Mon, Aug 23**
For more information and
to register to bid visit
HeadAuctions.com

This collection will be sold
ONLINE ONLY. Contents include
but are not limited to guitars,
vinyl records, music memorabilia,
furniture, glassware, home decor
and more!
First of multiple auctions.



William Lindsey Head 601-259-4466 MS Auction License 892

**Mitchell
Bros. and Sons**

**2021 FAIR
SPECIAL**

**THURSDAY & FRIDAY • 5-11PM
SATURDAY - LAST FRIDAY
12PM - 11PM**

Slidell, LA • 601-656-8480

Heart O' Dixie tops Scott's list of events

By Steve Swogetinsky

Dave Scott has enjoyed his time at the Fair but not in the usual way.

Scott competed in the Rez Run 10K during the Choctaw Indian Fair last week, and today he was planning to run the Heart O' Dixie Triathlon for the fifth time.

"I ran my first Heart O' Dixie in 2014," Scott said. "I skipped a couple here and there but this will be my fifth year. I always look back and see if I can beat what I did the year before because I am a year older."

"I am 59 years old going on 60," Scott said. "I started running in competitions in 2009. I do work out, getting ready for the Heart O' Dixie and some other events in the fall. I follow a training plan and it's all after work. I take care of the house and the dogs. Then it's swim, bike and run. It is kind of seasonal for me. I get started back around the first of April and carry it through the Fall. In the winter months when it gets dark early, it's hard to get out."

Scott said the Heart O' Dixie is a challenge. "The hardest part for me is the swim because I am a weak swimmer," Scott said. "Once I come out of the water, I know I can bike to Philadelphia. Last couple of years, I have been very conscious of the log trucks. That's always on my mind. People on that

highway are not used to seeing cyclists on the road but one day a year.

"And once I get to Philadelphia, I know I can run on into the Fair."

Scott goes to other events during the summer-fall season and likes to try a new one or two each year.

Scott lives in Jackson. He grew up in Madison County. His grandparents are from Leake and Neshoba counties.

"I have been going to the Fair on and off for most of my life," Scott said. "Now, I come up two weeks before the Fair. I do the Rez Run at the reservation and then come back for the triathlon."

He also likes spending time with family and friends at the campgrounds.

"There are a lot of people here waiting for the Fair to start," Scott said. "There is less traffic and less people. I enjoy the week before doing the Rez Run and then coming back to do the Heart O' Dixie."

He said he doesn't get tired doing the two races so close together.

"It fits in my training plan," Scott said.

Scott is retired from the state with 31 years. His last 12 years were in the secretary of state's office where he served as an attorney. Recently, he took a civilian job with the National Guard.



Dave Scott enjoys running the Heart O' Dixie Triathlon at the Fair.

Welcome back home!



Home: the place where you hang your 2021 commemorative apron and enjoy The Fair with friends and family!

**Welcome back, y'all!
May this be the best year yet!**



The Citizens Bank SM

Proudly serving:

Attala, Forrest, Harrison, Jackson, Lafayette, Lamar, Lauderdale, Leake, Kemper, Madison, Neshoba, Newton, Oktibbeha, Rankin, Scott and Winston counties.



Hannah Case is ready to celebrate the Fair.



Jim Hardy, Mae Hardy, Angela Durr, and Dannon Durr stand in front of their new cabin called Hardy House.



THE 2021 NESHOPA COUNTY FAIR

Enjoy the Fair!

The Clothesline

208 N. BYRD AVE. • PHILADELPHIA • 601-389-0440
FAIR HOURS: T, W, & F: 10:00AM-5:30PM • SAT.: 10:00AM-4:00PM • CLOSED MON. & THU.





Mike Donald, Andrew Donald, Kim Donald, Olivia Donald, and Erin Donald hang out at Cabin 152, which has been in the family for 54 years.



Kelsey Pender and Madilynn King walk around the Fairgrounds.



If you like the smell of sawdust, cotton candy, lemonade and visiting with friends you are probably a Neshoba County Fair goer like us!



#thetearoombeautybar
THE TEA ROOM

Love, Stephanie, Maddy, Meg, Anna & Kendall

Quality Hospice Care, Inc.
"Committed to Comprehensive Health Care"
"Serving Central Mississippi"
 317 RANGE AVENUE • PHILADELPHIA, MS • 601.656.5252



Emilee Noonew, Allie Windham, and Anna Windham catch up on the porch.



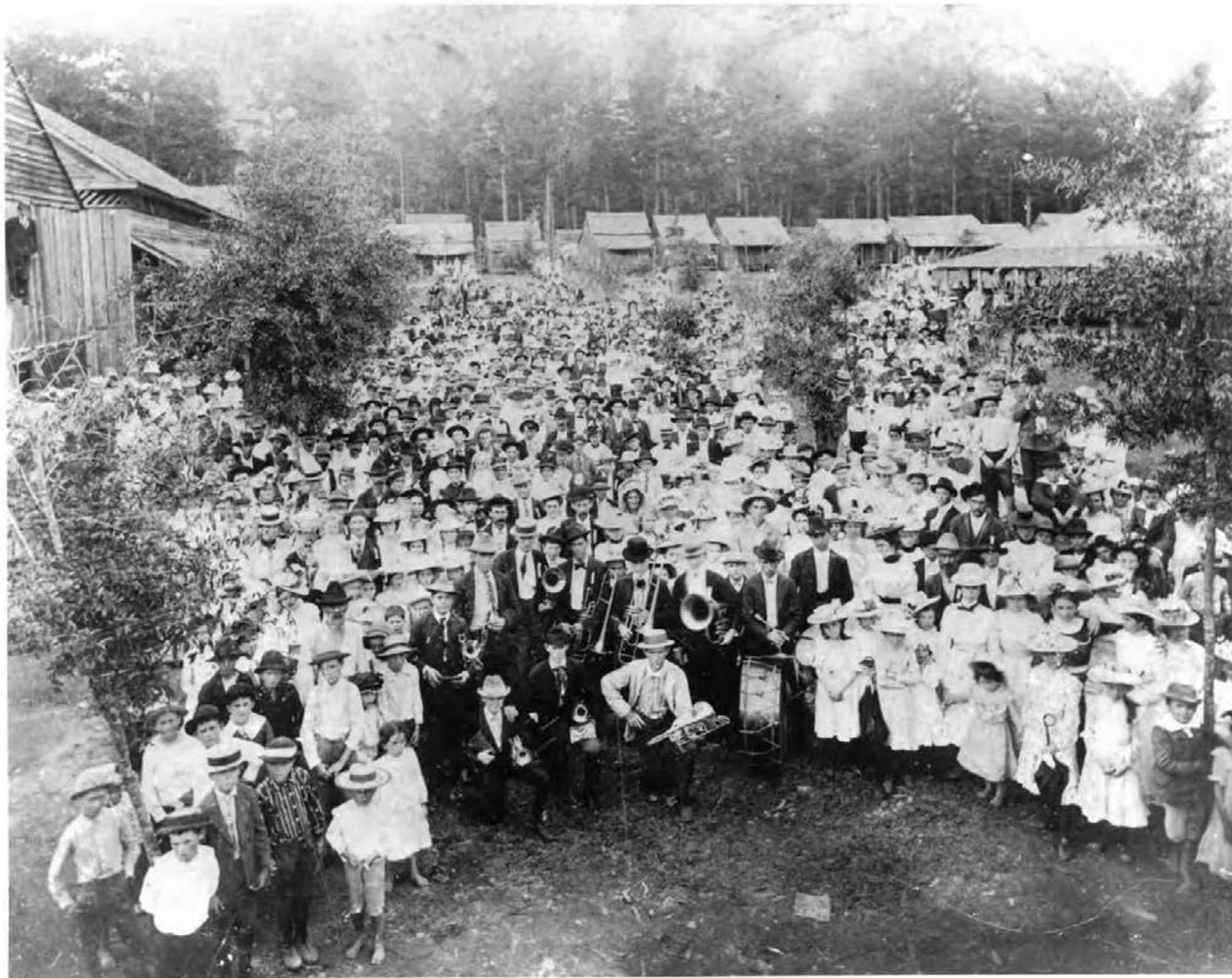
Linda Tingle, Carter Franklin, Michael Franklin, Jamie Franklin and Cooper Franklin hang out at Cabin 141, called Big Al's Place.



Joy Byrd, Sophie Swinney, Ally Byrd, Levi Langston, Baylor Byrd, and Sawyer Swinney have some fun playing on the racetrack.



Rebecca Posey, Carter Posey, Anna Dine Posey, Connie Jeanes, and Hal Jeanes play some music on the porch.



Here's what it looked like at the Fair 113 years ago. This was taken in front of the Pavilion circa 1908 about 20 years after the Fair was founded.
(Courtesy Carolyn Dearman)



WE SWING FOR THE FENCES EVERY DAY

It's a phrase on the minds of Mississippi State fans everywhere since our Bulldogs won college baseball's coveted **National Championship** in June. Fact is, though, swinging for the fences is something we do every day as part of our drive to change the world.

COME CELEBRATE WITH US THIS WEEK

WEDNESDAY, JULY 28, 10-11:15 A.M.

MSU-Meridian tent on the Square
Enjoy giveaways and learn about our new
Physician Assistant Program

WEDNESDAY, JULY 28, 11:15 A.M.

Meridian Day Program in the Pavilion
Wear maroon or your national championship shirt

THURSDAY, JULY 29, 2 P.M.

"Football at the Fair" in the Pavillion featuring
MSU Head Coach Mike Leach

WE RING TRUE™



MISSISSIPPI STATE
UNIVERSITY™

MSSTATE.EDU

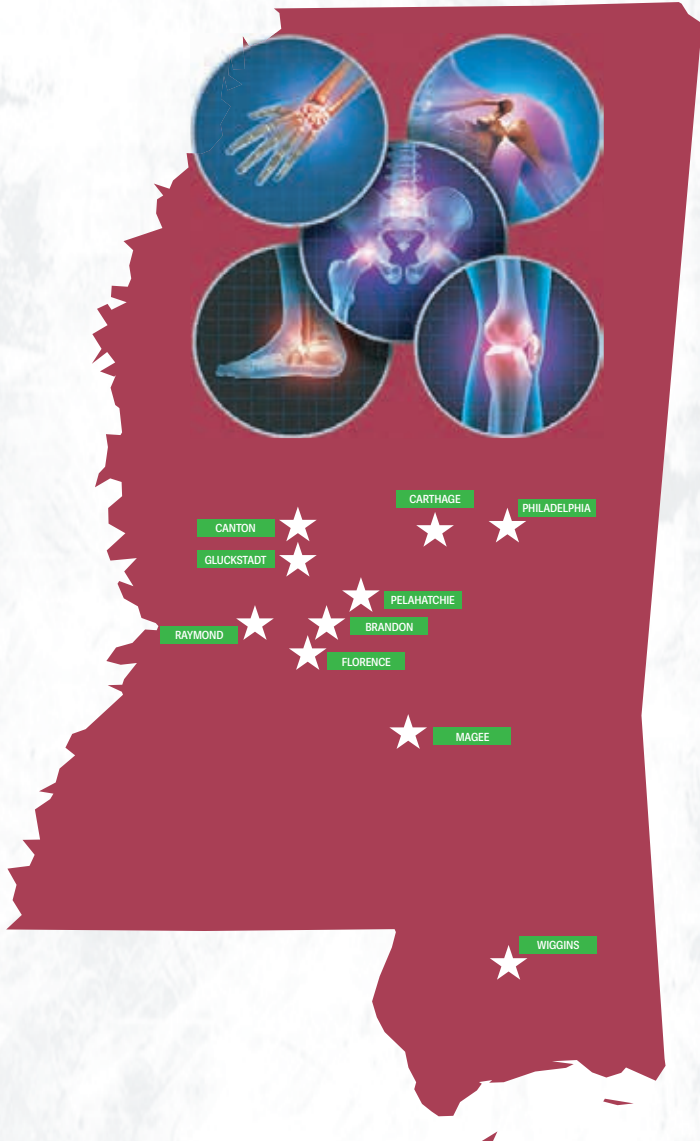
The road to recovery starts with Performance Therapy.

START LIVING YOUR LIFE TO THE FULLEST POTENTIAL. FEEL BETTER-FAST. PERSONALIZED CARE. COMPREHENSIVE CARE. HANDS-ON-TREATMENT. PROVEN RESULTS.

When you're in pain, nothing seems right. You miss out on your favorite activities. You may miss work and be unable to earn a living or provide for your family. At Performance Therapy in central Mississippi, we offer hands-on methods to relieve your pain and improve your function and mobility as quickly as possible.

Whether you are nursing a sports injury, suffering from chronic back or neck pain, healing from orthopedic surgery, or recovering from a stroke, you want a rehabilitation practice that gives you the time and attention you deserve.

At Performance Therapy, we're focused on your recovery. Our physical, occupational, and speech therapists help people from all walks of life regain their physical function and mobility. Whether you're recovering from a sports injury, stroke, or orthopedic surgery, or you're suffering from chronic neck or back pain, you'll want to visit the rehabilitation specialists who give you the time and personalized attention you deserve. We've been serving patients like you in central Mississippi since 2004.



10 Convenient Locations across Central Mississippi:

- | | | | | |
|---|---|---|---|--|
| BRANDON
1301 W. Government St.
Suite 104
(601) 591-7540 | CANTON
1883 Highway 43 South
Suite C
(601) 667-3144 | CARTHAGE
1081 Highway 16 W
(601) 267-3241 | FLORENCE
2990 Highway 49 S
Suite A
(601) 891-8179 | GLUCKSTADT
464 Church Road
Suite 400
(601) 707-5943 |
| MAGEE
720 3rd Street SW
(601) 439-7042 | PELAHATCHIE
201 S. Brooks Avenue
(601) 759-5006 | PHILADELPHIA
921 W. Beacon Street
(601) 650-0002 | RAYMOND
13010 Highway 18
(601) 857-2229 | WIGGINS
BATSON PHYSICAL THERAPY
711 Hall Street
(601) 928-6110 |

SPECIALIZING IN: PEDIATRICS | AQUA THERAPY | PELVIC FLOOR THERAPY | DRY NEEDLING THERAPY | SPORTS INJURIES | CHRONIC BACK PAIN | SURGICAL RECOVERY | STROKE RECOVERY | SPEECH THERAPY | OCCUPATIONAL THERAPY | PHYSICAL THERAPY | WORK CONDITIONING | WORK HARDENING | FCE

Call Performance Therapy at (601) 650-0002 to schedule your appointment at one of our Central Mississippi locations, or you can request one online at www.performancetherapy.info.

PerformanceTherapy
Comprehensive Care • Hands-on Treatment • Proven Results

RULES

Color the

Fair

- 1.) Color the Fair on this page or a paper plate or paper if your cabin has any.
- 2.) Email a photo of your drawing to fairphotos@neshobademocrat.com with ID and age before Wednesday at noon. Color and email any time before the deadline and we'll publish the best daily.

No official age restrictions because we're certain some enterprising adults will get a late-night notion to color on a porch. We're on the honor system here. Trickery may be published and possibly awarded if it's good. But we're not responsible if your neighbor signs your name.

Verified youngsters, however, will be given publishing preference. We're looking for creativity and emotion. We can only take so many jokes. A panel of top-secret judges will award a prize to be announced in Friday's Fair Times. No calls, please.



Family drives 14 hours to come to Fair

By Sarah Watkins

When Herman and Ann Smith Clark's children, Hannah and Graham, were younger they and some cousins found a big piece of wood on the Fairgrounds.

Ann Smith Clark took the board to her friend LeighAnn Jones who decoratively painted "Big Herm's Place" on it before she hung it on the wall of the front porch of Cabin 180-A branding it as Big Herm's Place.

Herman Clark grew up in Philadelphia, attending the Fair with his parents Herman and Lorena Clark of the Good Hope community. According to family lore, his grandmother Elizabeth Graham traveled by wagon to attend one of the first Neshoba County Fairs.

Ann Smith Clark spent her early years in Miami, Florida, but moved to Philadelphia at the age of 14 where she met Herman.

The two married two years later when they were both 16 years old and later moved to Fort Myers, Florida, for work. They now have two adult children Hannah and Graham Clark who also attend the Fair every year.

The Clarks bought Cabin 180-A, or Big

Herm's Place, 27 years ago but later tore it down and rebuilt it about seven years after buying it.

Since the family lives in Florida and drives 14-hours each year to attend the Fair, Big Herm's Cabin has a beach theme and is filled with beach-themed decorations Ann Clark has collected not only from Florida but also from different places the family has visited, such as the Dominican Republic.

"It's the friendship and the fellowship," Ann Clark said of what inspires the Clarks to make the trek to the Fair each year.

The Clarks stay at the Fair for the entire month of July and consider the Fair their vacation time.

"We come out here earlier because we like the quietness and the fun," Herman Clark said.

The Clark family also is excited to be back at the Fair for the annual Smith family reunion on the first Sunday of the Fair.

"This is our first time seeing family in over a year," Ann Clark said.

Clark family members said they describe the Fair to friends in Florida as a place to eat, socialize, dance, eat ice cream at 2 in the morning with great entertainment.

"It breaks all traditions," Herman Clark said.



Herman and Ann Clark



B&G TRANSPORT, LLC

1300 WEYERHAUSER ST.
PHILADELPHIA, MS 39350
P.O. DRAWER 647
OFFICE: 601.656.1262
FAX: 601.656.0006

B & G WOOD, INC.

"We Buy & Sell Timber"

Donald Grantham, President
M: (601) 416-6019 • Email: donaldgrantham1@gmail.com
Office: 601-656-1262 • Fax: 601-656-0006
1300 Weyerhaeuser St. • Philadelphia, MS 39350

GET VACCINATED AT THE FAIR

NESHOBA GENERAL WILL BE OFFERING FREE VACCINATIONS AT THE NESHOBA COUNTY FAIR

Neshoba General Team Members will be offering the COVID-19 Vaccine during the week of the Neshoba County Fair.

You may get your vaccine at the First Aid Center located behind the grandstand.

Vaccines offered daily from 10:00AM - 10:00PM

DEDICATED TO
EXCELLENCE
IN HEALTHCARE

NESHOBA
GENERAL

1001 HOLLAND AVENUE • PHILADELPHIA, MS • 601.663.1200 • WWW.NESHOBAGENERAL.COM

Neshoba County General Hospital - Nursing Home complies with applicable Federal civil rights laws and does not discriminate on the basis of race, color, national origin, age, disability, or sex. / ATENCIÓN: si habla español, tiene a su disposición servicios gratuitos de asistencia lingüística. Llame al (601) 663-1200. / CHÚ Ý: Nếu bạn nói Tiếng Việt có dịch vụ hỗ trợ ngôn ngữ miễn phí dành cho bạn. Gọi số (601) 663-1200.



As YOUR Commissioner of Agriculture and Commerce, I welcome you back to the Neshoba County Fair. The traditions here, the family time, the entertainment and fun have all grown from the roots of an agricultural event, much like the economy of Mississippi. I'm working for you to keep Mississippi's agriculture growing, our trade moving, and the supply lines flowing so we all have safe, healthy, affordable and abundant food. I'm putting conservative government to work for you.


- Andy Gipson


Commissioner of Agriculture and Commerce
Small Farmer Raising Timber, Cattle,
Chickens and Blueberries
Pro-Life Legislator of the Year 2014
Endorsed by NRA & Recipient of the
2013 NRA Defender of Freedom Award

Ordained Baptist Minister
Southern U.S. Trade Association
President
Husband to Leslie; Father of Joseph,
Benjamin, Abigail and Sarah

andygipson.com

 [CommissionerAndyGipson](https://www.facebook.com/CommissionerAndyGipson)

 [@CommAndyGipson](https://twitter.com/CommAndyGipson)

 [CommAndyGipson](https://www.instagram.com/CommAndyGipson)

Andy
Gipson

Agriculture Commissioner

Paid for by Friends of Andy Gipson



Carla Davis, Jerome Donald and Drew Davis show a group of children a horse in the stables.



Laura Bryan is pictured next to paintings of ladies that she has been collecting for years. They are done by her friend Moni.



Paid for by Friends of Delbert Hosemann

It's great to be back at the Neshoba County Fair!

DELBERT
LT. GOVERNOR



ANDREW DABBS, MD



YOUR HEALTH IS OUR PRIORITY



Surgery Clinic of Philadelphia \ 601.663.1234
1003 Holland Avenue \ Philadelphia, MS 39350

Neshoba County General Hospital – Nursing Home complies with applicable Federal civil rights laws and does not discriminate on the basis of race, color, national origin, age, disability, or sex. ATENCIÓN: si habla español, tiene a su disposición servicios gratuitos de asistencia lingüística. Llame al (601) 663-1200. CHÚ Ý: Nếu bạn nói Tiếng Việt, có các dịch vụ hỗ trợ ngôn ngữ miễn phí dành cho bạn. Gọi số (601) 663-1200.

Dedicated to Excellence in Healthcare

www.neshobageneral.com



SHANNON KIRKLAND, FNP-C
GRANT GUILD, MD



BOBBY H. SMITH, MD



YOUR HEALTH IS OUR PRIORITY



JESSE STOKES, FNP-C



Neshoba Family Medicine \ 601.650.1991
Neshoba Urgent Care \ 601.656.1465
1120 E. Main Street \ Suite 1 and 2
Philadelphia, MS 39350

Neshoba County General Hospital – Nursing Home complies with applicable Federal civil rights laws and does not discriminate on the basis of race, color, national origin, age, disability, or sex. ATENCIÓN: si habla español, tiene a su disposición servicios gratuitos de asistencia lingüística. Llame al (601) 663-1200. CHÚ Ý: Nếu bạn nói Tiếng Việt, có các dịch vụ hỗ trợ ngôn ngữ miễn phí dành cho bạn. Gọi số (601) 663-1200.

Dedicated to Excellence in Healthcare

www.neshobageneral.com



Patrick Lewis takes a few practice laps around the racetrack. Lewis has been racing for the last three years.



Need a break from the Fair?

Weekly or Day Passes Available.

Raquetball courts, steam rooms, 4 weight rooms, smoothie bar and more!



113 LAKESIDE DR. PHILADELPHIA
601-650-0075
philadelphiaathleticclub.net



May God bless you and your family during the Fair.



Mary Kate Gray puts on ribbons for youth food preservation in the exhibit hall.



Keith Boatner, Bryan Moore and Kenny Moore put together their deck at their camper that they have been taking apart and rebuilding every year for years.

BUY A FOOTLONG GET ONE
50% OFF

Order online with code
BOG050

SUBWAY

595 EAST MAIN ST. - 601-656-6046
 1006 CENTRAL DR. - 601-389-0020
 INSIDE WALMART - 601-656-5200

*Welcome back to the
 Neshoba County Fair!*

Weyerhaeuser
www.weyerhaeuser.com/careers



SINCE 1889,
THE NESHOPA COUNTY FAIR HAS BUILT A

LEGACY

of leadership and fellowship.

As Mississippi's flagship university dedicated to the success and advancement of this state, we're proud to recognize Mississippi's Giant House Party.

Ole Miss.



Eubankses once spent 80 days at cabin

By Sarah Watkins

The Eubankses of Louisville love the Fair and spend as much time pre-Fair as they can.

"We love the Fair so much that we spent 80 days at the Fairgrounds one year," said Ronnie Eubanks, who owns Eubanks Wrecker in Louisville and is married to Cindy Eubanks, a retired nurse.

When the power turned on at the Fairgrounds in 2017, the Eubankses said they made their Cabin 720, which they have owned for more than 30 years, their home for the summer.

The Eubankses have two daughters, Jolie D'Antonio and Jamie Summer, who grew up attending the Fair each year. They also have two grandsons, Win D'Antonio and John Dean D'Antonio, who come to the Fair each year from Madison.

Ronnie Eubanks has a painting hanging in the cabin depicting him sitting on the porch the year he and Cindy spent 80 days there.

Cindy said she does all the inside cooking when it comes Fair time, and her husband does all the outside grilling. Their Fair cooking tradition is a barbecue on Friday nights and steaks on Saturday nights.

The Eubankses said they are ready for their grandchildren to come to the Fair this year so they can watch the horse races together. Their favorite part of the Fair is the food, the races and the family time.



Cindy and Ronnie Eubanks



WE WELCOME YOU TO THE
2021 NESHOPA COUNTY FAIR!

TOLBERT
CHEVROLET/BUICK

1040 W BEACON ST • PHILADELPHIA, MS 39350 • (601) 656-4802

*"Daydreamin' about
the Fair!"*

WESTSIDE
BODY SHOP

COMPLETE COLLISION
REPAIR & TRUCK ACCESSORIES

CHRIS JONES, OWNER
20 WATER VIEW LANE • 601-656-9461



ANDERSON

Family Medical Center - Airpark

A Division of Anderson Regional Medical Center - South

Dr. Michael Shrock, Dr. Samantha Mosby and Hannah Johnson, FNP-C, take pride in providing quality medical care for you, your family and your business.

- Pediatric to Geriatric Care
- In-house Lab & X-ray Services
- Drug Screens
- Preventative Healthcare
- Worker's Compensation Exams
- Physicals (Pre-employment, DOT & Sports)

Monday - Friday
8 a.m. to 4:30 p.m.
Walk-ins are welcome!



**IF YOU NEED
CARE DURING
THE FAIR,
WE'RE HERE!**



1056 Holland Avenue • Philadelphia, MS • 601.656.8545

BullockAutoWorld.com



**CARS • TRUCKS • SERVICE
BRAKES • OIL CHANGE • TIRES**

**We STILL
Strive to Amaze You!**



Kevin Alford does some construction on Cabin 215.



Mike Evans, Kate Evans, Emery Evans, Mitzee Evans, Lincoln Evans, Martha Lewis, Dan Evans, and Merlene Barnes hang out on Sunset Strip.

Personal Care for Your Loved One



Atwood Personal Care Home started in our hometown of Kosciusko, MS in 1993. In 2016, we opened a 30 bed home in Kosciusko and have continued to grow and expand. In 2009, we opened a 32 bed home in our nearby fair city of Philadelphia, MS. Our homes are owned and operated by Mark and Debra Atwood, RN from Kosciusko, MS.

Although our homes offer different amenities, they all offer exceptional care to you and your loved ones. We provide a clean and homey environment to qualified residents while striving to meet their physical and emotional needs at a reasonable cost. Come see why Atwood's is the next best place to your own home.

Atwood Personal Care Home is a private pay facility. Long term care policies as well as veterans benefits can help cover monthly costs. Veterans OR their widows may be approved for VA benefits that can help cover HALF of our monthly cost, be sure to visit our website for more information on VA benefits and if your loved one qualifies!

AMMENITIES: Private rooms | 3 home-style meals per day | Laundry and Housekeeping | Scheduled daily activities | 24-7 care by qualified staff | Assistance with daily living tasks | Medication assistance Individual emergency call system for each resident | Outdoor walking track | Both homes are managed by nurses and on call 24-7!



ATWOOD
PERSONAL CARE HOME

PHILADELPHIA: 101 PILOT ST. • 601-656-7394 | KOSCIUSKO: 328 GOODMAN ST. • 662-289-2347



Karson Holdings, Brock Walker, Reed Walker and Ellis Dubisson play golf toss.

COWBOY CHURCH AT THE NESHOPA COUNTY FAIR

JULY 25, 2021 • 9:30AM • IN THE SHOWBARN

With Chaplin Edward Smith, leading Jockey David Alvarez, and testimonies from local people. Prayer for all trainers and jockeys. And much more!

Prophetic artwork by Amy Rylander.



Chaplain, Edward Smith



Jockey, David Alvarez

Bring lawn chairs!



Bring lawn chairs!

GLOBAL VISION FAITH CHURCH

1006 EAST MAIN STREET • PHILADELPHIA, MS 39350 • (601) 389-7757 • GLOBALVISIONFC.COM



“...there isn’t anything like this, any place on Earth.”

- Ronald Reagan

Cherishing our old Fair memories while making new ones!



NANCE'S
NORTHSIDE SHORTSTOP
CONVENIENCE STORE

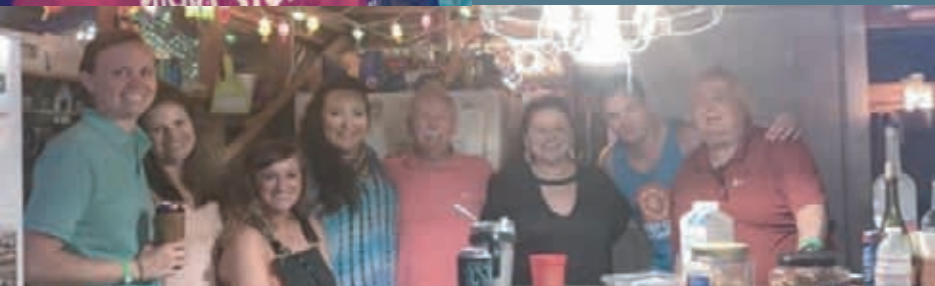
12070 Pecan Ave
Philadelphia
601-656-6088

~Locally Owned & Operated~

FAIR CITY
LIQUOR

12060 Pecan Ave, Philadelphia
601-568-5035

Open Monday thru Saturday, 10 am - 10 pm



GRILLIN' AND GRINNIN'



Tiffany Byrd and her son Beau Byrd enjoy sitting by the grill on a nice afternoon.

Williams family enjoying 'new' cabin

By John Lee

Jacob Williams enjoys spending his days at the Fair in the Williams Cabin 215 playing cards with his family and celebrating his birthday during Fair week.

"My first day at the Fair was when I was just three days old," Williams said. "My birthday falls every year here on July 27. I've been coming to the Fair ever since then for the past 27 years, and this year is my 28th year."

Williams said his favorite thing to do at the Fair is hang out with his family, as it is a family reunion for him since he always sees a lot of family members that he doesn't see regularly.

"We usually have around 15 of us in the cabin," he said. "My family, especially the kids, are all looking forward to seeing Hardy perform. They're in love with Hardy and they've been looking forward to watching him play. We also enjoy playing cards and visiting."

Williams said his grandmother Kinny Williams was the one who bought the Williams Cabin back in 1976. He is not sure who owned it beforehand.

"We've renovated and updated the cabin this year," he said. "We tore it all the way down to the foundation it was on and rebuilt it from the ground up."

He said he and the rest of his family are looking forward to catching up and watching their kids enjoy the Fair.



Jacob Williams and his nephew Jiles Williams proudly stand in front of their recently-rebuilt cabin.



Celebrate every day of the Neshoba County Fair!

Let Dr. Craig Martin and his Staff help you look and feel better.

GIFT CERTIFICATES AVAILABLE.
CONTACT US FOR A CONSULTATION

DR. CRAIG MARTIN

GENERAL DENTISTRY AND FACIAL AESTHETICS

1001 EAST MAIN STREET, PHILADELPHIA, MS • 601.656.3366





Jenny Nance, Cindi Nance and Jennifer Rogers get their cabin in order for the Fair this year.

Join us for an **ECCC Reunion!** Monday, July 26 .. 1 p.m. Founders Square Pavilion

Visit with ECCC Alumni, Friends & Staff · Free Popsicles · Door Prizes



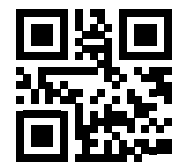
Don't miss the
Collegians rock-n-roll band!
Performances by the
Centralettes & Cheerleaders!

REGISTRATION NOW OPEN
Fall Semester Classes
Begin August 16



*Programs Available in University Transfer,
Career & Technical, & Healthcare Education*

For more information,
email go2ec@ecc.edu
or scan the QR code



EAST CENTRAL

COMMUNITY COLLEGE
Decatur, MS 39327 • 877-GO-2-ECCC • www.eccc.edu

East Central Community College is an equal educational and employment opportunity provider.

**FAIR SUNDAY
SERVICE**

LOOKING FOR A COOL PLACE TO WORSHIP
ON THE SUNDAY OF THE FAIR?
JOIN US FOR GREAT FELLOWSHIP & WORSHIP

@ 10:00 A.M.

**Coldwater
BAPTIST CHURCH**

Meet your Fair neighbor

Cabin #150

■ **Where are y'all from?** Philadelphia

■ **What is the history of your cabin?** It was built in 1967 for \$800. Located on Bourbon Street

■ **What is your favorite Fair meal?** The lemon almond pie that I make every year and my chicken dip.

■ **What's one thing you especially look forward to at the Fair?** Seeing people we only see once a year.

■ **How many people stay in your cabin during the week?** We have about 15 and it's a mixture of our grandkids and their friends that stay with us.

– By Janice Payne and Uhl Payne



Janice Payne and Uhl Payne



The Neshoba County Fair has been a tradition & destination for making memories since 1889.
Enjoy your time at the fair!

FIRST FINANCIAL BANK  **In the Business of YOU.**

510 Hwy 35 South • Carthage, MS 39051 | (601) 267-6657 | www.ffb1.com | Member FDIC



Hollie Breland, Sarah Skinner, Andy Breland and Angie Breland relax on the front porch.



JASON MARTIN
REALTOR®
601.575.5744
jasonm@gohillphilly.com



DERIC HORNE
REALTOR®
601.416.7968
deric@gohillphilly.com



PAMELA BELK LOVERN
REALTOR®
601.720.3405
pamelabelklovern@gmail.com



JASON LOVERN
REALTOR®
601.416.1013
jasonlovern15@gmail.com



DALE GERMANY
REALTOR®
601.934.6146
dale@gohillphilly.com



MATTHEW SMITH
REALTOR®
601.692.5484
matthew@gohillphilly.com

VIEW ALL AREA MLS LISTINGS AT WWW.GOHILLPHILLY.COM

READY TO SELL?

HISTORIC LOW INVENTORY.

Call us Today!

Pre-approved buyers are looking for houses!



RESIDENTIAL • COMMERCIAL • LOTS & ACREAGE • PROPERTY MANAGEMENT
325 BYRD AVENUE • PHILADELPHIA, MS • 601-389-0003 • GOHILLPHILLY.COM



InTouch provides complete care for the whole family. Providing medical and mental health medication treatment and counseling. We have Family Nurse Practitioners and Psychiatric Nurse Practitioners to treat medical and mental health concerns. Children and adults.

Call us for an appointment Today!

MERIDIAN • PHILADELPHIA • NEWTON • ACKERMAN



**InTouch Health
& Psychological Services**

1120 E. MAIN ST. • STE. 24 • PHILADELPHIA, MS 39350 • 601-781-8677 • intouchheal.com



Jamie Thomas and Annie Martin enjoy catching up.



James Ritchie and Harrison Smith take a break to eat some pizza.



Jewelry Just 4 Fun

440 EAST BEACON ST. PHILADELPHIA, MS

601.656.8928





Charles McNeal, Lucy McNeal and Milton McNeal take in the sights from Camper Spot 124.



McLAIN SERVICES

601-656-6333

Welcome back to the Neshoba County Fair!

107 Magnolia Street, Philadelphia, MS 39350

For All Your Air Conditioning and Plumbing Needs!



Dale Hurtt, Missy Robertson and Stephen Robertson hang out at Missy's family cabin that was built in 1964 by her grandfather and great-grandfather.



**DON'T LEARN HISTORY.
FEEL IT.**

History is more than a timeline—it is a thread woven through all of our lives. Pick up that thread at the Museum of Mississippi History and the Mississippi Civil Rights Museum. Plan your visit today at twomississippimuseums.com.



**TWO
MISSISSIPPI
MUSEUMS**
MUSEUM OF
MISSISSIPPI
HISTORY MISSISSIPPI
CIVIL RIGHTS
MUSEUM

42ND ANNUAL PHILADELPHIA SERTOMA CLUB
Heart O' Dixie
TRIATHLON '21

THE PHILADELPHIA SERTOMA CLUB THANKS OUR MANY VOLUNTEERS AND SPONSORS FOR THEIR SERVICE AND SUPPORT ON THIS YEAR'S HEART O' DIXIE TRIATHLON.

 PHILADELPHIA SECURITY INSURANCE	 Since 1977 WOODY'S General Store Newport, MD	 The Citizens Bank
 NESHOPA GENERAL	 YATES RESTAURANT & BAR	 Sta-Home Home Health • Hospice
 TRIPLE COMMER LOGGING INC.	 PHILADELPHIA PAC ATHLETIC CLUB	 AIRPARK FAMILY DENTISTRY
 PerformanceTherapy Comprehensive care • 3000+ on location • Proven results	 ALFA INSURANCE	 THE JUNCTION CONVICTIONLESS RESTORED

Pork recipes to fill your belly

Cabin Cuisine

HONEY MUSTARD BBQ PORK CHOPS

Prep Time: 15 mins
Cook Time: 15 mins
Additional: 2 hours

Total Time: 2 hrs 30 mins
Servings: 8

Ingredients:
1/3 cup honey
3 tablespoon orange juice
1 tablespoon apple cider vinegar
1 tablespoon white wine
1 teaspoon Worcestershire sauce
2 teaspoons onion powder, or to

taste

1/4 teaspoon dried tarragon
3 tablespoons Dijon mustard
8 thin cut pork chops

Directions:

Place honey, orange juice, vinegar, wine, Worcestershire sauce, onion powder, tarragon, and mustard in large resealable plastic bag. Slash fatty edge of each chop in about three places without cutting into the meat; this will prevent the meat from curling during cooking. Place chops in the plastic bag and marinate in the refrigerator for at least 2 hours. Preheat the grill for high heat. Lightly oil grill grate. Place chops on grill, and discard marinade. Cook chops for 6 to 8 minutes, turning once, or to desired doneness.

GRILLED PORK CHOPS WITH FRESH HERBS

4 tablespoons olive oil, or more to taste
4 tablespoons soy sauce
4 tablespoons fresh lemon juice
2 tablespoons chopped fresh parsley
2 tablespoons chopped fresh rosemary
2 tablespoons chopped fresh thyme
1 tablespoon coriander seeds, ground
1 clove garlic, minced
1 lemon, zested
4 (6 ounce) bone-in pork chops (1 inch thick)

Whisk olive oil, soy sauce, lemon juice, parsley, rosemary, thyme,



ground coriander, garlic, and lemon zest together in a shallow dish. Add pork chops and toss to evenly coat. Cover the dish with plastic wrap and marinate in the refrigerator for at least 1 hour, turning chops halfway through.

Preheat an outdoor grill for high heat and lightly oil the grate.

Remove chops from the marinade and gently shake off excess. Discard the remaining marinade.

Place chops on the preheated grill and reduce heat to medium. Cook until no longer pink in the center, about 8 minutes per side. An instant-read thermometer inserted into the center should read 145 degrees F (63 degrees C). Let rest for 5 minutes before serving.

BBQ PULLED PORK PIZZA

1 (14 ounce) package pre-baked pizza crust
2 tablespoons barbecue sauce, or more as desired
1 teaspoon chipotle chili powder
Salt and ground black pepper to taste

1/2 cup prepared pulled pork
1/8 cup sliced onion
1/8 cup sliced red bell pepper

Directions:

Preheat oven to 450 degrees F (230 degrees C). Place the pizza crust onto a baking sheet. In a bowl, mix the barbecue sauce with chipotle chili powder; season with salt and black pepper. Spread the sauce over the pizza crust. Arrange pulled pork, sliced onions, and red bell pepper slices evenly over the pizza. Bake in the preheated oven until the toppings are hot and the pizza crust is crisp on the bottom, 12 to 15 minutes.

BBQ Pork for Sandwiches

Prep Time: 15 mins

Cook Time: 4 hrs 30 mins

Total Time: 4 hrs 45 mins

Servings: 12

Ingredients:

1 (14 ounce) can beef broth
3 pounds boneless pork ribs
1 (18 ounce) bottle barbecue sauce

Directions:

Pour can of beef broth into slow cooker, and add boneless pork ribs.

Cook on high heat for 4 hours, or until meat shreds easily. Remove meat, and shred with two forks. It will seem that it's not working right away but it will. Preheat oven to 350 degrees F (175 degrees C). Transfer the shredded pork to a Dutch oven or iron skillet and stir in barbecue sauce. Bake in the preheated oven for 30 minutes, or until heated through.

SLOW COOKER BBQ PULLED PORK

4 tablespoons paprika
2 tablespoons dark brown sugar
2 tablespoons chili powder
2 tablespoons ground cumin
2 tablespoons salt
1 tablespoon ground black pepper
1 tablespoon dried oregano
1 tablespoon white sugar
1 tablespoon ground white pepper
1 teaspoon cayenne pepper, or more to taste
1 (7 pound) bone-in pork shoulder roast
1/4 cup water

1/2 teaspoon liquid smoke flavoring (Optional)
2 cups barbecue sauce

Mix paprika, brown sugar, chili powder, cumin, salt, black pepper, oregano, sugar, white pepper, and cayenne together in a small bowl.

Massage spice rub into the pork roast. Wrap tightly in a double layer of plastic wrap; refrigerate for at least 3 hours.

Unwrap the roast and place in the bottom of a lined slow cooker. Add water and liquid smoke. Cover and cook on Low until pork is fork-tender, 8 to 10 hours.

Transfer roast to a cutting board; discard liquid in the cooker. "Pull" by tearing meat into thin shreds with 2 forks or your fingers. Discard fat.

Place shredded meat back in the slow cooker; toss with 1 cup barbecue sauce, and heat on Low until hot, 30 to 60 minutes. Serve with remaining barbecue sauce.



Kayleigh Vance paints the deck of their cabin to get it "Fair ready."



Bob Posey and his son Trey Posey grill some sausages.

Lost & Found

The Mississippi Treasury has millions of dollars in our lost and found box.

See if any of this unclaimed money belongs to you!

1. Visit Treasury.MS.gov

2. Type in your name

(or the name of a family member, business, or local organization)

3. Click GO!



WHAT IS UNCLAIMED MONEY?

It is sometimes very difficult for banks, credit unions, utilities, and even retail stores to find the rightful owners of money. People move, families lose touch, and sometimes the money just sits there. After five years, these entities are required to turn that money over to the state to find the rightful owners, which is what our Unclaimed Money team does.



Scan to Search





Reinette Foster, Eddie Foster, Janice Payne, Doris Vowell and Uhl Payne visit at the Payne Cabin.



Sue Fulton enjoys the start of the Fair in the cabin she's had since 1970.



Brynlee Jones, Emery Floyd and Natalie Floyd.

*Wishing all a safe
and happy Fair!*





Bob and Cathy Luke play with their dogs, Shadow, and Liza.



Erin Bonds and her daughter Emma Bonds pose for a quick picture.

You're Invited!

Special Occasions invites you to attend the Ribbon Cutting Ceremony/Building Opening to be held on Saturday, August 21, 2021, at 1:00PM to celebrate twenty-five years in the formal-wear business, and for the dedication of the new building location in Philadelphia, 1034 Holland Avenue.

Special Occasions' new building has a beautiful bridal showroom area where bridal gowns are featured in the new Bridal Boutique Gallery. Our passion is to feature many great couture line for pageants and prom. The shoppe also has its own hair and makeup salon, tanning salons, little girls gowns in the Cinderella Room with accessories to complete.

Special Occasions will open a second location in Newton, MS after Labor Day to better accommodate our shoppers. Special Occasions continues to be the #1 formal-wear shoppe for bridal, prom, pageant and children's gowns for in-state and out-of-state customers.

Say YES to the Dress!



Special Occasions will give away FREE Special Occasion t-shirts to those who visit our new shop, enjoy refreshments, after the ribbon cutting ceremony, and sign-in to tour our newly renovated building.



25
ANNIVERSARY

BRIDAL • PAGEANT • PROM
HAIR SALON • TANNING
601-656-7474
PHILADELPHIA & NEWTON



Alexis Claire, Charleigh Claire Gentry, Beth Moore, Finley Moore, Justin Moore and Wyatt Moore are all excited for the Fair this year!



Jerome Donald is pictured with his horse on a nice, quiet afternoon at the stables.

IMPROVING YOUR QUALITY OF LIFE

At Total Pain Care, we believe that a comprehensive, interdisciplinary approach to pain management is essential to the evaluation and treatment of patients with acute, chronic and cancer pain syndromes. Our goal is to reduce suffering, increase function and productivity, while promoting independence and a higher quality of life for our patients. We are committed to treat patients with the highest standard of care available. Our physicians specialize in pain management and are trained to provide treatment across the full pain continuum, from the least invasive treatment to complex interventional therapies.

CONDITIONS WE TREAT

BACK & SPINE PAIN | BODY PAIN

CANCER RELATED PAIN | HEAD & NECK PAIN | HIP & KNEE PAIN

NERVE PAIN | SHOULDER & ARM PAIN

Visit our website for additional information on common conditions we treat and many of our treatment options that are available. www.totalpaincare.org



Dr. Charles C Martin, IV



Dr. Eric J. Pearson



Dr. Kenneth E. Staggs, Jr.



CALL 601-482-9224 TO SCHEDULE AN APPOINTMENT



Neshoba Outpatient Therapy \ 601.663.1482
205 E. Hospital Road \ Philadelphia, MS 39350

Neshoba County General Hospital – Nursing Home complies with applicable Federal civil rights laws and does not discriminate on the basis of race, color, national origin, age, disability, or sex. **ATENCIÓN:** si habla español, tiene a su disposición servicios gratuitos de asistencia lingüística. Llame al (601) 663-1200. **CHÚ Ý:** Nếu bạn nói Tiếng Việt, có các dịch vụ hỗ trợ ngôn ngữ miễn phí dành cho bạn. Gọi số (601) 663-1200.



YOUR HEALTH IS OUR PRIORITY



Dedicated to Excellence in Healthcare

www.neshobageneral.com



Neshoba Inpatient Therapy \ 601.663.1485
Located inside Neshoba County Nursing Home
1001 Holland Ave. \ Philadelphia, MS 39350

Neshoba County General Hospital – Nursing Home complies with applicable Federal civil rights laws and does not discriminate on the basis of race, color, national origin, age, disability, or sex. **ATENCIÓN:** si habla español, tiene a su disposición servicios gratuitos de asistencia lingüística. Llame al (601) 663-1200. **CHÚ Ý:** Nếu bạn nói Tiếng Việt, có các dịch vụ hỗ trợ ngôn ngữ miễn phí dành cho bạn. Gọi số (601) 663-1200.



YOUR HEALTH IS OUR PRIORITY



Dedicated to Excellence in Healthcare

www.neshobageneral.com

Versatility. It runs in the family.



Welcome back to the Neshoba County Fair!

M Series 579-141.4 HP Wide range of attachments



Stop In today to demo the do-it-all Kubota M Series tractors.

- Powerful and efficient engines for cleaner emissions and better fuel economy
- Ergonomic design for all-day comfort
- Electrohydraulic shuttle transmission for fast, easy shifting

Together we do more.

Windham Tractor & Implement Co

592 E. Main Street

Philadelphia, Mississippi 39350

601.656.2761

KubotaUSA.com

© Kubota Tractor Corporation, 2020. This material is for descriptive purposes only. Kubota disclaims all representations and warranties, express or implied, or any liability from the use of this material. For complete warranty, disclaimer, safety, incentive offer and product information, consult your local Dealer or go to KubotaUSA.com.

SWINGING INTO THE FAIR



Maggie Martin enjoys a morning swing.



Allen Hailey, Kady Rose Hailey, niece Rhyanna Jane Carey (2-years-old) and Ann Hailey

Hailey family excited to be cabin owners

By Sarah Watkins

The Hailey family is especially excited about this year's Fair.

"This is our first year to own this cabin," said Ann Hailey, of the family's recently purchased Cabin 201.

The Haileys started renting cabins each year during the Fair in 2018 but this year they went out to the Fairgrounds and rode around until they found a cabin perfect for accommodating their family.

"We've all been to the fair for years, and this is not our first rodeo, just our first time owning

a cabin," Ann Hailey said.

The Hailey family is pleased with Cabin 201's location because it is close to the Midway and not too far from the Pavilion.

The cabin the Haileys rented in previous years was toward the back of the new section of the Fairgrounds close to the camper gates. So, for them, their new spot is an upgrade and closer to the entertainment.

The Hailey family is from Nanih Waiya and has been visiting the Fairgrounds regularly since the power was turned on in May this year. Ann and Allen Hailey have four daughters. Kady Rose Hailey, Mallory Hailey Reynolds, Harley Pullin and Laura Beth Hailey.

The family painted the inside of the cabin a lilac purple, painted shelves, and did other renovations to get their cabin ready for this year's Fair.

"We started renovating at the end of May into the first of June," Allen Hailey said.

The inside before the renovations was plain wood, and that's when the Haileys decided to put color into their Fair cabin. Ann Hailey painted the mustard green floors black.

"Probably every year, we will add something different or have something new to do," Ann Hailey said.

The Hailey family is looking forward to creating new memories and many traditions in

their cabin.

Ann Goss Hailey is originally from Union and when she was growing up going to the Fair was a big thing to do. Her husband, Allen, however, did not grow up going to the Fair.

The Haileys said they look forward to hearing Hardy and Riley Green at the Grandstand and attending the annual flea market. They also are going to be cooking their annual fruity pebble rice Krispy balls.

Cabin 201 sleeps 28, and the Haileys anticipate that the cabin will be complete this year with family members and friends.

Triple M cabin brings 3 families together

By Sarah Watkins

The McCool, Morrow and McClellan families call the bright blue Cabin 344 near the Race-track their Fair home.

The families said they painted the cabin bright aqua to make it easier for people to find.

Just in case the bright blue color was not enough to tell visitors where the McCool, Morrow and McClellan families stay during the Fair, however, they adorned the front of the cabin with three giant, black letter M's representing the three family names.

Because of those three letter M's, Cabin 344 is now better known as the Triple M Cabin.

In 1994 Melissa Rudolph Morrow McClellan and her sister Pam Rudolph McCool bought what was known as the Margartaville cabin. Although the sisters are originally from Philadelphia, their family did not stay at the Fair when they were growing up.

"We never looked inside of it or anything. We just bought it,"

Pam McCool said of buying that first cabin in 1994. She said her husband Tommy McCool did not even know they were going to buy it.

That first cabin had only three beds, so they threw in some bunk beds, and the cabin became their home away from home during the Neshoba County Fair each year.

In 2006, they upgraded by purchasing Cabin 344, now known as Triple M, that had a bigger back patio.

When walking up to the three-story Triple M Cabin, visitors are greeted by a door that is painted with handprints and the names of McCool, Morrow and McClellan family members.

Pam McCool put a small television in on the lower level of the cabin.

"We had to put that TV in the cabin for Tommy because even during the Fair he has to keep up with sports," Pam McCool said.

During the Fair, the families' traditions include playing card games and washer board, a game similar to cornhole.



Cabin 344, known as Triple M, houses the McCool, Morrow and McClellan families.



**JOHNE. STEPHENS CHAPEL
FUNERAL SERVICES**



Jack Hardy and his Papaw Mike Tingle take a stroll through the Fairgrounds.



Deborah Yates paints a mural at the Bates Cabin #250.

GlassWorx would like to welcome you to the return of THE NESHOPA COUNTY FAIR!

We wish you all a safe and happy week!



We Specialize in: Energy Efficient Vinyl Replacement Windows, Custom Mirrors, Standard & Custom Shower Enclosures, Sun Rooms, Screen Rooms, Residential Screens, Beveled Glass, Patio Canopy Covers, Hollow Metal Doors, Commercial Door Locks & Closers, Screens, Solar Screens

1163 Weyehaeuser St. • Philadelphia, MS • 601.389.2020 • www.glassworxllp.com
Open Monday Thru Friday – 8am – 5pm



YOUR HEALTH IS OUR PRIORITY



- Neshoba Sleep Center \ 601.663.1332\1335
- Neshoba Wound Care Center \ 601.663.4224
- Neshoba Pain Management Center \ 601.389.1552
- Neshoba Outpatient Infusion and Oncology \ 601.389.1553



All services located on the NG Campus
1001 Holland Avenue \ Philadelphia, MS 39350

Neshoba County General Hospital – Nursing Home complies with applicable Federal civil rights laws and does not discriminate on the basis of race, color, national origin, age, disability, or sex.
ATENCIÓN: si habla español, tiene a su disposición servicios gratuitos de asistencia lingüística. Llame al (601) 663-1200.
CHÚ Ý: Nếu bạn nói Tiếng Việt, có các dịch vụ hỗ trợ ngôn ngữ miễn phí dành cho bạn. Gọi số (601) 663-1200.

Dedicated to Excellence in Healthcare

www.neshobageneral.com

WELCOME BACK!

RYAN, ASPEN, REECE AND EVERYONE HERE AT **MORGAN TILE CARPET ONE**
HOPE YOU AND YOUR FAMILY HAVE AN AMAZING 2021 FAIR!



TURNING HOUSES INTO HOMES SINCE 1938!



909 B STREET MERIDIAN, MS 39302. 601-485-8174. MONDAY THROUGH FRIDAY, 7:30-4:30



@MORGANTILE.CARPETONE



Madison Stephens paints her shutters yellow and aqua to match the porch and rocking chairs.



Spring Moody relaxes with her son, Woods Moody, and daughter, Millie Anne Moody.



Karri Dufour, Josie Wiggins, and Nick Lewis enjoy some slow-cooked ribs on the tailgate of a truck near the race track.



Rosalee Howell, Cabin 318, is ready for all the Fair fun this year!

HAVE A SAFE & BLESSED FAIR!

With Love From The Boatner Family



JODI | MICAH | JOSEPH | KARI | SCOTT | HANNAH | MATTHEW | JOHN SCOTT | ALLISON | WILLIAM

SCAN HERE
TO DOWNLOAD
OUR
MOBILE APP



JOIN US FOR CHURCH
SUNDAY
JULY 25TH 9:30AM
AT THE PAVILION



SCOTTBOATNER.COM | FACEBOOK.COM/SBMINT | YOUTUBE.COM/C/SCOTTBOATNER



KB Breland, William Comans, Emory Lee Comans, Tripp Breland, Maddi James Breland, Cellers Richardson, Emma Bonds, and Katie Rea Tinsley all could barely sit still for their picture because they were having so much fun playing.



Welcome back to the FAIR!

YATES
BUILDING SUPPLY

406 SOUTH LEWIS AVENUE • PHILADELPHIA, MS 39350 • 601.656.3065



Abby McNeil, right, and her father Kevin McNeil enjoy a relaxing night on their cabin porch decked out in Mardi Gras decor.



YOUR COMPLETE GENERATOR SOLUTION

DESIGNED | ENGINEERED | MANUFACTURED
CLINTON, MISSISSIPPI

A Taylor Power standby generator is ready within seconds of a power outage - reassuring you that your business or home is protected.

www.taylorpower.com

947 Industrial Park. Dr. Clinton, MS 39056

601.922.4444

Commercial | Residential | Agriculture | Mobile

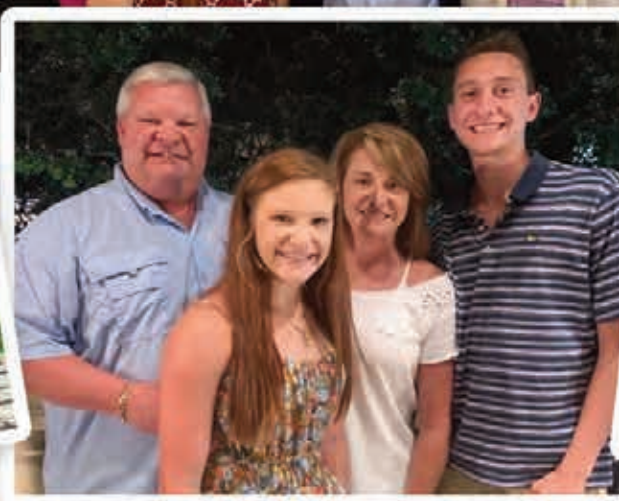


Dr. Nicole F. Harrison

FAMILY DENTISTRY

UNION, MS

Welcomes all of you back to the Fair!



COMMITTED TO GIVING YOU AND YOUR FAMILY SOMETHING TO SMILE ABOUT.



Dr. Nicole Harrison, DMD
FAMILY DENTISTRY

GENERAL DENTISTRY | WHITENING | BOTOX

25043 HIGHWAY 15 • UNION, MS 39365 • (601) 774-9949 • NICOLEHARRISONDMD.COM



Cullen and Cory McCoy paint and repair their deck for this year's Fair.



Jerry Barnett and David Bennett man the grill.



Lisa Holmes stands in front of a bar named after her mother, Imma Gene's nickname, Sisty.



Carol Chunn with her grandson Keeton Stokes and his girlfriend Makayla Ray prepare for the Fair.

Square Peg MINI MALL

Family-owned *Featuring Square Peg Furniture*




**NEW ALL SOLID WOOD FURNITURE • LOW OVERHEAD, LOW PRICES • HOME DÉCOR
NEW LADIES AND CHILDREN'S BOUTIQUE CLOTHES • JEWELRY • COWHIDE BAGS**

335 W. MAIN STREET • PHILADELPHIA, MS • 601.416.6624

907 CARTER AVENUE, SUITE #2 • PHILADELPHIA, MS • 601.568.5222

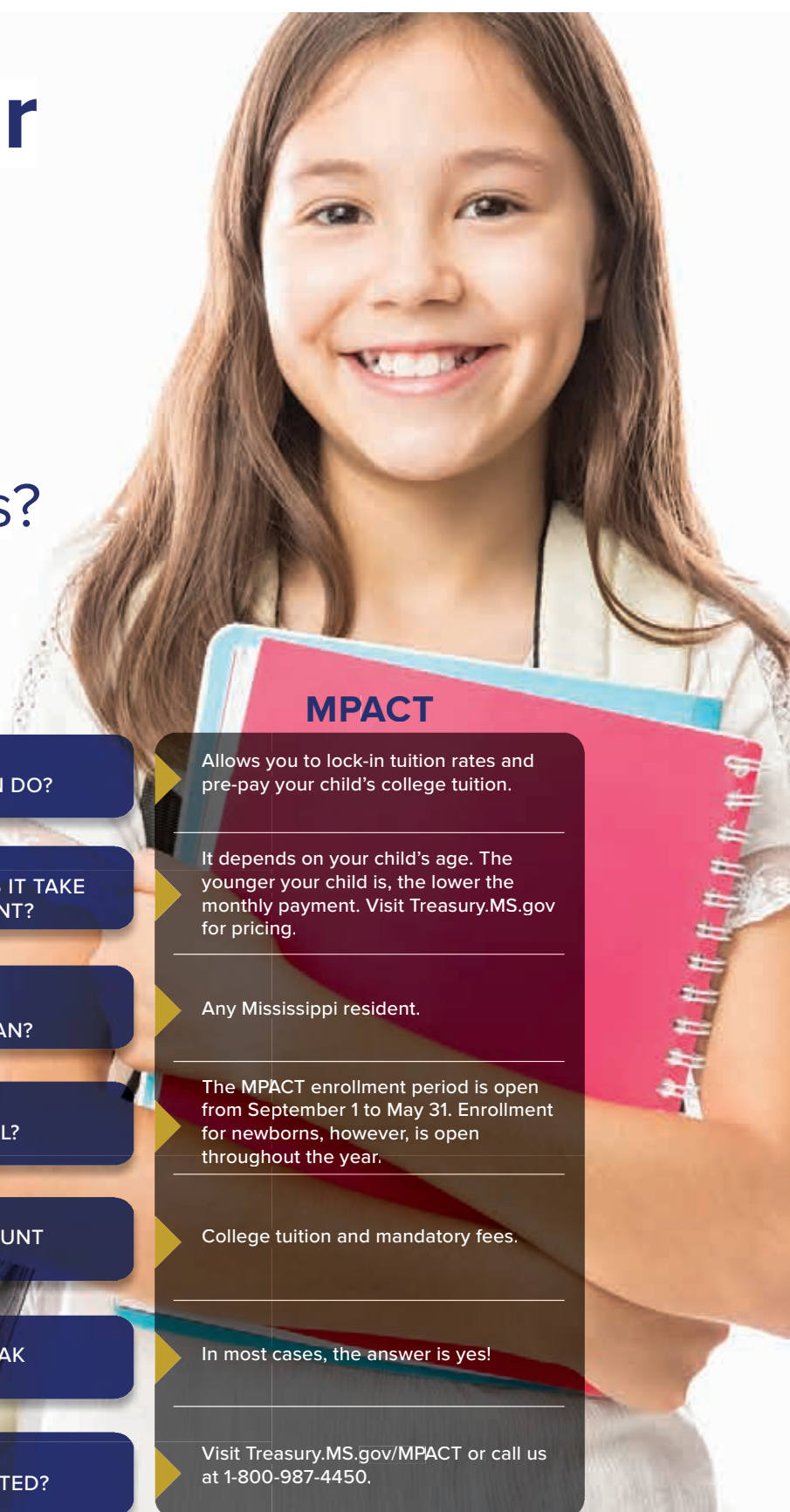
• SQUAREPEGMINIMALL.COM

MEMBER OF THE BETTER BUSINESS BUREAU  squarepegminimall

Your third grader is halfway to college.

Are you halfway toward your college savings goals?

The Mississippi Treasury is here to help with two great plans!



MACS

Allows you to open a tax-advantaged savings account that can be used for your child's education.

As little as \$25!

Almost anyone. Parents, grandparents, relatives, and friends can open an account and make contributions.

Anytime!

Tuition, books, supplies, and certain room and board expenses, as well as elementary and secondary tuition expenses for younger students.

In most cases, the answer is yes!

Visit Treasury.MS.gov/MACS or call us at 1-800-987-4450.



WHAT DOES THIS PLAN DO?



HOW MUCH MONEY DOES IT TAKE TO OPEN AN ACCOUNT?



WHO CAN START AN ACCOUNT OR PLAN?



WHEN CAN I ENROLL?



WHAT CAN THE ACCOUNT BE USED FOR?



DO I GET A TAX BREAK FOR INVESTING?



WHERE DO I GET STARTED?

MPACT

Allows you to lock-in tuition rates and pre-pay your child's college tuition.

It depends on your child's age. The younger your child is, the lower the monthly payment. Visit Treasury.MS.gov for pricing.

Any Mississippi resident.

The MPACT enrollment period is open from September 1 to May 31. Enrollment for newborns, however, is open throughout the year.

College tuition and mandatory fees.

In most cases, the answer is yes!

Visit Treasury.MS.gov/MPACT or call us at 1-800-987-4450.

This comparison is a brief summary of MPACT and MACS plans and is not a substitute for College Savings Mississippi contract documents. Prospective purchasers are urged to review those documents carefully.





JASON LOVERN
REALTOR
601.416.1013

HILL

REAL ESTATE GROUP, LLC

RESIDENTIAL • COMMERCIAL
LOTS & ACREAGE • PROPERTY MANAGEMENT



PAMELA BELK LOVERN
REALTOR
601.720.3405



10560 ROAD 759
PHILADELPHIA | MLS# 20-850 **\$1,650,000**



10400 COUNTRY LANE
PHILADELPHIA | MLS# 21-346 **\$210,000**



HWY 15
PHILADELPHIA | MLS# 21-193 **\$150,000**



16800 #125 HWY 21 SOUTH
PHILADELPHIA | MLS# 19-625 **\$249,900**



HWY 486
PHILADELPHIA | MLS# 20-834 **\$82,500**