



NEWS

HANCOCK NAMED PRINCIPAL AT PHILADELPHIA ELEMENTARY

Melisha Hancock — Page 3A

COOK OF THE WEEK

ADKINS ENJOYS TIME WITH GRANDKIDS

Belynda Adkins — Page 1B



THE NESHOPA DEMOCRAT

Established 1881 — Oldest Business Institution in Neshoba County Philadelphia, Mississippi Wednesday, June 9, 2021 140th Year No. 23 **\$1.00

DEVELOPERS UNKNOWN

Downtown hotel gets city's support

By STEVE SWOGETINSKY steve@neshobademocrat.com

An undisclosed developer considering a hotel project in downtown Philadelphia asked for and received the city's support last week.

David Vowell, president of the Community Development Partnership, brought the proposal to the Mayor and Board of Aldermen during a regular

meeting on June 2.

The board took up the matter in executive session before emerging and voting 3-0, with Ward 1 Alderman Joe Tullos and Alderman-at-Large Leroy Clemons absent, stating their intent to consider a Tax Increment Financing (TIF) arrangement in an unspecified amount if the downtown hotel project were to materialize.

A TIF is a creative financing

mechanism that diverts a portion of sales and property taxes generated by a specific development — monies that would normally go into the public treasury for general use — to repay borrowing associated with improvements to that specific development or an area.

Mayor James A. Young said Monday he and board members do not know the name of the potential developer or their

associations.

"It is part of a hotel group," Young said. "We don't know the name yet because they are not obligating anything to us at this point. They are just looking."

Young said the developers are considering "two or three different entities as far as that particular process."

"That was simply a vote of confidence," Young said. "I

don't know whether it is a national or a small group. We don't know that. We were not privileged to be given a name because no one has committed to anything. They are just talking and I think they were just trying to clear up any questionable response to their particular approach to our city."

Also during the executive session, the board considered what to do about a potential

lawsuit that involved a police car chase that resulted in an accident.

The board took no action and the mayor said the matter would be turned over to the city's insurance carrier.

In other matters, aldermen voted to:

- Approve the payment of \$1,029 to Waggoner Engineering for its work on the Auto-

See HOTEL, page 2A

old high school demolished



Photo by Sarah Kathryn Watkins

Demolition of the old Neshoba Central High School began last week and is scheduled to be completed by the end of July. McKee Construction, Inc. of Philadelphia, which specializes in demolition and excavation, was awarded the \$695,350 contract earlier this year. The work began with asbestos removal when school let out in May. The building, which housed both the high school and junior high at one time, was

constructed in 1963. Bricks from the demolition will be used to construct a monument similar to the school's previous monument featuring two blue rockets. The new high school, completed in 2017, was part of an initial overall \$23.4 million project approved by voters in August 2015.

HYDROCODONE

Meth, pot, cocaine in drug stop

By DUNCAN DENT duncan@neshobademocrat.com

A Louisville man was arrested with felony amounts of methamphetamine, marijuana, cocaine and hydrocodone following a traffic stop Friday morning, officials said.



Kadeem Thomas

Kadeem Thomas, 28, of 128 Hillcrest Street, Louisville, was arrested and charged with possession of marijuana in a vehicle, possession of a controlled substance, four counts of possession with intent to distribute and felon in possession of a concealed weapon.

Thomas remain Monday afternoon in the Neshoba County Detention Center on a \$125,000 bond but was denied bond for the weapon charge. Jail records show that his next court date is June 24.

Neshoba County Sheriff Eric Clark said the drugs he is believed to have been attempting to distribute have been identified as methamphetamine, cocaine, marijuana and hydrocodone.

The arrest stemmed from a traffic stop conducted by Sheriff's deputies.

Clark said deputies encountered a Honda Civic at the intersection of Road 553 and Road 616. Clark said deputies then made a traffic stop that yielded the multiple felony narcotics charges.

The driver was identified as Thomas. In addition to the drugs and weapon, some cash and possible paraphernalia were seized.

Clark said that anyone with any information on crime is encouraged to call Crime Stoppers at 855-485-8477.

Producing goat milk products rewarding at High Hill Ranch

By JOHN LEE john@neshobademocrat.com

After working all day as an X-ray tech at Laird Hospital in Union, Kathy Rickles retreats to her 92.5 acre High Hill Ranch in Neshoba County to tend her 25 goats producing milk for the hand-made products she sells.

Rickles has been tending her Alpine and Nubian goats on her goat farm off of Highway 492 east of Union since 2011 using milking machines to produce the milk necessary for products, such as goat cheese, goat milk, goat milk lotion and goat milk soap.

Rickles started with just two goats she bought from a man in Vicksburg, and now

has 25 goats through crossbreeding and purchasing more goats.

Rickles said the crossbreeding has led to more premium milk since Alpines produce a high volume of milk, and milk from Nubians contains a higher amount of butterfat, resulting in better taste.

"I've known Kathy all my life and the products she makes are very high quality," said Susan Myers, a lifelong friend and avid High Hill Ranch fan.

"I've enjoyed everything she's made, especially the goat cheese and soap."

Rickles researched the health properties of goat milk in 2011 and learned that the milk is good for the skin due to its ability to reduce skin

inflammation and wrinkles thanks to its natural emollients. Also, goat milk is protein-packed and loaded with essential nutrients such as vitamin C, B1, B6, B12 and E, she learned.

"I've read that the potassium in goat milk works to maintain helpful cardiovascular function and protection against high blood pressure, atherosclerosis and stroke," Rickles said.

Rickles, who was born in Philadelphia grew up working with animals, but she had to learn how to work on a dairy.

Rickles had a learning curve when she started High Hill Ranch, and it took a lot of research and help from farmers

See RANCH, page 2A



Kathy Rickles, the owner of High High Ranch, milks her goat April to make her goat milk-based products like soap and cheese.



7 93573 75329 8

SUBMIT YOUR NEWS

Engagements & Weddings

There is no charge for engagement and wedding announcements. Submit them to weddings@neshobademocrat.com.

The deadline for submitting engagements and weddings is at noon on Friday before the Wednesday publication.

Every effort will be made to run the announcement on the date requested, but space requirements and time sometimes prohibit it.

Wedding copy must not exceed the equivalent of more than two 8 1/2 x 11 inch pages.

The Democrat reserves the right to edit articles to fit space requirements and style.

News of parties relating to engagements or weddings can be submitted.

Obituary policy

The Democrat publishes a standard format obituary at no charge.

The standard obituary includes: service, burial and funeral home details, date of death, age, place of residence, a sentence or two of personal information (no opinionated comments) detailing occupation, education, church affiliation, military service, listing spouse or children, immediate survivors (list only spouses, children, siblings, number of grandchildren, number of nieces and nephews) and pallbearers. In-laws, aunts, uncles, friends and honorary pallbearers are not included in the free listing. The standard obituary may be up to 150 words in length.

To list extended family and more details, there is a charge of \$125 for up to 300 words total; \$250 for up to 500 words total; \$500 up to 1,200 words total. Photos may be included for an additional charge of \$25.

Obituaries must be submitted electronically by funeral homes to obituaries@neshobademocrat.com no later than Tuesday at noon for publication in Wednesday's edition. Any obituary not submitted electronically is subject to a \$25 charge.

School and community news

The Democrat welcomes school and community news. Send to news@neshobademocrat.com or neshobademocrat.com/submit.

Of Local Interest

Let us know about your events at least a week in advance. Send announcements to local@neshobademocrat.com

Tips and breaking news

Let us know when you see news happening. Send tips to tips@neshobademocrat.com. News tips are encouraged and can be kept confidential.

Sports

Headed to a sporting event with a camera or have sports news, contact Sports Editor Steve Swogetinsky: sports@neshobademocrat.com

Letters to the editor

Letters to the editor expressing your views and opinions (please limit them to 250 words or less) are welcome and encouraged: neshobademocrat.com/submit or directly to Jim Prince at jprince@neshobademocrat.com.

How to contact us

By telephone

Telephone: 601-656-4000
Facsimile: 601-656-6379

Electronically

neshobademocrat.com
Facebook: [/neshobademocrat](https://www.facebook.com/neshobademocrat)
Twitter: @NeshobaDemocrat

Physical address

439 Beacon ST
Philadelphia, MS 39350

Mailing address

P.O. Box 30
Philadelphia, MS 39350

Advertising sales

Joy Stewart
601-676-0998
joy@neshobademocrat.com

Editor & Publisher

Jim Prince
601-676-0992
jprince@neshobademocrat.com

Managing Editor

Steve Swogetinsky
steve@neshobademocrat.com
601-676-0993

Sports editor

Steve Swogetinsky
steve@neshobademocrat.com
601-676-0993

Subscribe to the Democrat

Subscriptions are \$36 annually in Neshoba County, \$40 non-local, \$25 for 6 months locally, \$27 for 6 months non-local and \$43 annually Out of State.

Subscribe online at neshobademocrat.com/subscribe.

Founded in 1881

The Democrat was founded in 1881 and has been locally owned ever since.

(USPS 377-160)

The Neshoba Democrat is published every Wednesday by The Neshoba Democrat Publishing Co., Inc., 439 Beacon Street, Philadelphia, Miss., James E. Prince III, president. Subscriptions are \$36 per year in Neshoba and adjoining counties, \$40 in other Mississippi counties and \$43 for out of state. Single copy price is \$1. Periodicals postage paid at Philadelphia, MS.

The Democrat reserves the right to reject or edit any or all advertising. POSTMASTER: Send address changes to: The Neshoba Democrat, P.O. Box 30, Philadelphia, MS 39350.



PHS Class of 1953 holds reunion

Philadelphia High School Class of 1953 held its 68th class reunion at Lake Tiak-O'Khata May 14-16. Front row, from left: Kathy Terry (Mary's daughter), Claudia Adkins Sims, Marjorie Buie Underwood, Connie Walters (Jack's widow). Back row, from left: Mary Ratcliff Lyles, Jerry Lott, Willie Mae Richie Lott, Gail DeWeese Welsh, Victor C. "Sonny" Welsh, Jr. and Billy Underwood. Not pictured is Berniece Jones Barham. Those not attending were recognized as well as deceased members. Those attending were grateful that they were able to be together again.

Union woman arrested with meth

By DUNCAN DENT
duncan@neshobademocrat.com

A Union woman was caught with a felony amount of methamphetamine while going through a roadblock over the weekend, the authorities said.

Candace Lynn Barton, 31, of 10481 Road 244, Union, was arrested on charges of felony possession of methamphetamine and misdemeanor charges of possession of paraphernalia and driving under a

suspended license.

Barton remained in the Neshoba County Detention Center on Monday afternoon and has been denied bond on the felony possession charge.

Sheriff Eric Clark said the arrest came as a result of concentrated patrols in the area of Road 616 and Lynwood community.

Clark said that during the course of an investigation into a burglary reported at a mobile



Candace Barton

home in the area on Thursday, May 27, they identified areas that could benefit from increased patrols.

"We had a burglary reported in that community and during our investigation, we identified some things that

needed to be addressed," Clark said. "From time to time we will identify an area where we will do some concentrated patrols whether that is from

calls we have gotten from the area or an investigation. Officer presence is the number one deterrent to crime."

As part of the increased patrols, Clark said they arrested Barton in a roadblock at the intersection of Roads 418 and Road 325. Barton was identified as the driver of a yellow Kia Rio.

Clark said anyone with any information on crimes or potential crimes is encouraged to please call Crime Stoppers at 855-485-8477.

Pearl River Resort updates mask policy

By STAFF REPORTS
news@neshobademocrat.com

Fully-vaccinated guests will not be required to wear a mask at Pearl River Resort, officials announced last week.

In compliance with Centers for Disease Control and Prevention and Choctaw Health Center COVID-19 guidelines, Pearl River Resort has updated its mask policy.

Effective last Friday, Pearl River Resort properties and its sister casino, Bok Homa Casino in Sandersville, will no longer require "fully vaccinated" guests to wear face coverings.

Guests will be asked to provide proof of vaccination when entering the Silver Star, Golden Moon or Bok Homa Casino.

That proof may be their vaccination card, a copy of their card, or a photo of their card on

their smart phone. If a guest is unable to show proof of vaccination, they will be required to wear a mask on property.

Pearl River Resort and Bok Homa Casino will continue their in-house safety protocols, including temperature screening and property cleaning procedures. The Resort invested over half a million dollars for safety equipment and technology that will remain in place.

Masks are also optional for fully-vaccinated individuals visiting the Resort's non-gaming properties: Dancing Rabbit Golf Course, Dancing Rabbit Inn and Geyer Falls Water Theme Park. Guests may be asked to show proof of vaccination.

For more information on Pearl River Resort's properties, call 1-866-447-3275 or visit www.pearlriverresort.com.

Ranch

Continued from page 1A

she knew to master milking goats and preserving the milk, butter and cheese.

"I'm still learning things to this day," Rickles said.

She began selling goat milk soap to customers at the Farmers Market in Philadelphia in 2011 to make some extra

money on the side, and it was then that people started asking if she sold other products.

After realizing she needed a dairy license to sell goat milk and goat cheese, Rickles obtained the license in 2014 and expanded High Hill Ranch.

Her goat cheese is one of her most popular items coming in different flavors such as regular, jalapeño, ranch and black peppercorn.

The soap and lotions also

come in a variety of scents, such as vanilla sugar and peppermint.

Rickles said goat milk ice cream is something she has been experimenting with, but it is not commercially available due to requiring state approval plus needing to hire another person.

Rickles plans to continue making her products and will appear at the Philadelphia Farmers Market at The Depot in this month.

Rickles was born and raised in Philadelphia. Her parents were Jamie and Margaret Rickles. She attended Neshoba Central and Meridian Community College. She has a daughter, Maggie Eubanks, and four step-grandchildren, Mallory, Chase, Asher and Rafe Eubanks.

To learn more about High Hill Ranch, call Rickles at 601-562-3243, or email highhillranch3@yahoo.com or visit her page on Facebook.

Hotel

Continued from page 1A

mated Weather Observing System at the Philadelphia Airport;

- Approve the payment of \$12,866 to Waggoner Engineering for its work on the Booker T. Washington gym project;
- Approve the purchase of two 2021 Dodge Chargers for

the Philadelphia Police Department at the cost of \$29,541 each. The cars are being purchased on state contract from Kirk Motor Company of Grenada;

- Approve a travel request from Fire Chief Pierce Clark and Jeff Franks to travel to Volk Field, WI, on June 12-19 for state emergency task force training.
- Approve the title transfer of emergency equipment issued to other task force agencies

around the state. The equipment was purchased for those agencies by the task force through the Philadelphia Fire Department and issued to them;

- Approve Alderman-at-Large Leroy Clemon's reapportionment of Darryl Young for a full term on the Philadelphia School Board;
- Approve the payment of the following invoices from the city's Development Infrastructure Grant Program account: East Central Insulation, \$9,480;

GlassWorx, \$2,231; Barrett Enterprises, \$4,955 and All-South Construction, \$4,770;

- Approve for M&S Services to cut the grass in the median on Highway 16 from McDonald's to the city limits at a cost of \$990. This is a one-time expenditure; and,

Scott Hawkins contributed to this report.



Oh...the treasures you might find.

Cherry Picked

ANTIQUES & COLLECTIBLES
222 W. Beacon St. - Philadelphia, MS
601-416-3443



We keep you on the road!

MAXWELL
AUTO SERVICE

10411 HIGHWAY 16 E • PHILADELPHIA, MS
8-5 MON - FRI • 8-12 SAT • (601) 575-4799



Faye's
BOUTIQUE

JEWELRY • WEDDING
PAGEANTS • PROM

216 BYRD AVENUE NORTH • PHILADELPHIA, MS
(601) 656-5924



EJR
FRAMES & THINGS

Trendy and fun picture frames, crosses, Adirondack chairs and much much more.

10660 HWY 486
PHILADELPHIA
301.416.2713



Melisha Hancock has been named principal of Philadelphia Elementary School.

Hancock named Philadelphia Elementary's next principal

By STEVE SWOGETINSKY
steve@neshobademocrat.com

PHILADELPHIA — Melisha Hancock will not have any trouble finding her way around as she takes over as principal at Philadelphia Elementary School.

That's where she began her career in education and she is looking forward to her new assignment.

"The elementary school is where everything starts," Hancock said. "I never thought I would be going back to the elementary school. You move up but then you say I need to go back there."

"If you want to make the biggest difference, you have to be where everything starts. And this is where a child's education starts"

Hancock has held several positions during her 20-plus years with the Philadelphia School District.

She started as a third-grade teacher at Philadelphia Elementary School. She taught third grade for six years and sixth grade for five years. Then she moved over to the high school. There she taught math and algebra and later served as assistant principal over the middle school. She was also the cheerleader sponsor.

Hancock is originally from Columbia. She attended Southwest Community Col-

lege and graduated from the University of Southern Mississippi. She received her master's degree from Mississippi State University.

Hancock has her National Board Certification in Early Adolescent Math.

During the past year, she has been director over federal programs and curriculum. She did that while also teaching eighth-grade math and algebra.

From her experience as curriculum director, Hancock has seen how a student's education career is connected, from kindergarten all the way through their senior year.

"The biggest thing is making sure our students leave each grade ready for the next grade," Hancock said. "We have to make sure they are working on grade level."

"Reading and Language Arts are so important. Our students need to expand their vocabulary. How can you read a word and spell it if you don't use it and know what it means? I want school to be enjoyable for everyone but we have to remember we are in the business of education," Hancock said.

Hancock said she and her staff can't do it alone. It is going to take families and the community getting involved to move the elementary school forward.

"I know many of the fami-

lies," Hancock said. "I have taught many of the parents whose children are in the elementary school. I have taught older brothers and sisters," Hancock said. "I am not above picking up the phone and calling a parent when we need their support. We will use these connections to reach our students. Parental contact is so important."

Superintendent Dr. Lisa Hull said Hancock is the right person for the job.

"She has seen our school district, pre-K through 12, so she has a great understanding of what needs to happen," Hull said. "She has already established a relationship with the community and that will be a great asset to the school as we move forward. We hate to lose her over here as curriculum director but this is where we need her now."

Hancock said she had thought about applying for the principal's position but hesitated because she has just started the job as director of federal programs and curriculum.

"Mrs. Hull asked me if I would consider applying," Hancock said. "She mentioned it and I was very interested. I can see from working in this position things that I would like to see happen there and things I can do and add to make sure we are successful."

grill up **DAD**
something good

Steve's on the Square
Fine Clothing Since 1983

June 20
415 Center Ave
Philadelphia, MS 39350
601-656-5056
www.stevesonthesquare.com

f i

Neshoba County Farmers' Market

2nd Saturday 7 a.m. - 12 p.m. at THE DEPOT 256 W. Beacon St.

Other Saturdays 7 a.m. - 12 p.m. behind the FARM BUREAU BUILDING

Tuesday & Thursday 6-8 a.m. 704 E. Main St.

June Tomatoes, squash, potatoes, onions, blueberries, green beans, tomato berries, Swiss chard, pork-rinds, honey, goat cheese, baked and canned goods

July Tomatoes, peppers, cucumbers, squash, zucchini, peaches, corn, peas, beans, potatoes, melons, eggplant, okra, herbs, honey, pork rinds, goat cheese, goat milk ice cream, baked and canned goods

August Watermelon, okra, squash, cucumber, tomatoes, peppers, figs, pears, jams, jellies, preserves, baked and canned goods

SUMMER KID'S CLUB AT CANAL PLACE CINEMA 7
EVERY WEDNESDAY MORNING IN JUNE

JUNE 2 - BABE (G)
JUNE 9 - CAT IN THE HAT (PG)
JUNE 16 - Flintstones (PG)
JUNE 23 - Little Rascals (PG)
JUNE 30 - How the Grinch Stole Christmas (PG)

\$5.00 FUN DAY AT THE MOVIES
Doors open at 9:30AM
Movie begins at 10:00AM

SUMMER KID'S CLUB CONCESSION SPECIALS
KID COMBO TRAY \$5.00

CANAL PLACE CINEMA 7
601.65.MOVIE
canalplacecinema7.com • #CPC7

Community Development Partnership

NATURAL AND AG-RELATED HOMEMADE PRODUCTS SUCH AS SOAPS, LOTIONS, FLOWERS, PLANTS, AND OTHER CRAFTS MAY ALSO BE AVAILABLE THROUGHOUT THE MARKET SEASON.

Interested in becoming a vendor?
Cost: \$10.00 per vending day OR \$50.00 for the entire season

For questions about requirements or to register, contact the Neshoba County Extension Office at 601-656-4011 or email ca783@msstate.edu.

FARM BUREAU MISSISSIPPI MISSISSIPPI FARMERS MARKET MISSISSIPPI STATE UNIVERSITY EXTENSION GENUINE MS Neshoba County CO-OP COMMERCIAL BANK THE PARTNERSHIP FOR A HEALTHY MISSISSIPPI

Opinion

FOUNDED 1881

THE NESHOPA DEMOCRAT

*Truth, justice and progress, without fear or favor*JAMES E. PRINCE III, *Editor and Publisher*STEVE SWOGETINSKY, *Managing Editor*JOY STEWART, *Interim Advertising Director*STEVE SWOGETINSKY, *Sports Editor*ARTHUR STANLEY DEARMAN, *Editor and Publisher 1966-2000*
1932–2017

EDITORIALS

Is China to blame for virus?

The COVID-19 pandemic that arose 18 months ago has killed more than 3.5 million individuals worldwide. The daily body count is thankfully easing, and attention is shifting from solely saving lives to retracing the trail of death to its source. Finger-pointers can wind up digitally challenged, but avoiding future calamity means responsible parties must be held to account.

It is human nature for the guilty to avoid looking in the mirror. China, where the coronavirus inarguably originated, has made it clear that an apology is not forthcoming. As if the lack of Chinese contrition isn't maddening enough, Beijing has stated that it will no longer cooperate with any investigation into the virus' origin.

However, China cannot force the world to unlearn what it already knows. As The Washington Times reported Friday, U.S. intelligence agencies have identified a virus strain studied in the Wuhan Institute of Virology as a possible "backbone for the creation of a pathogenic chimeric virus," pointing to an experimental rather than a natural cause. This echoes what Bill Gertz wrote in The Washington Times in January 2020, and no amount of silencing by Facebook and other media outlets will alter the truth.

As facts come into focus, China is meeting criticism with belligerence. The Chinese Communist Party's semi-official Global Times recently declared the nation must be prepared for an "intense showdown" with the U.S.: "The number of China's nuclear warheads must reach the quantity that makes U.S. elites shiver should they entertain the idea of engaging in a military confrontation with China." In other words, Americans angered by China's affronts must be frightened into

silence.

With characteristic bluntness, former President Trump has issued a statement calling for financial compensation:

"China should pay \$10 trillion to America, and the World, for the death and destruction they have caused!"

But some Americans have their own issues with

mirrors. Freedom of Information Act requests have produced more than 3,000 emails, some revealing that while National Institute of Allergy and Infectious Diseases director Anthony Fauci reassured the nation in early 2020 that COVID-19 likely originated in nature, he directed his deputy to study up on whether the Wuhan lab, which his institute partially funds, engaged in "gain of function" research, which can produce deadly pathogens.

The wall of denial is crumbling before emerging evidence that coronavirus is anything but natural. Even President Biden, who rode the public's fear of death into the White House, has bowed to inevitability. He has called for a 90-day investigation into whether the virus originated in a Chinese lab. To wonder why such a query is not automatic is to forget that sometimes the truth hurts. It's a lesson not lost on State Department employees who warned that such an investigation could "open a can of worms," according to Vanity Fair.

There is value in turning the other cheek, but humanity has already done that. COVID-19 is likely the fifth pestilence to emerge from China in the last 20 years, says Trump National Security Adviser Robert O'Brien. If this pandemic proves to be the result of a leaky lab, China must open its checkbook.

— *The Washington Times*

FLASHBACKS

JUNE 13, 1941

Hays McKay is the new scoutmaster of Philadelphia's Boy Scout Troop 37, which has undergone complete reorganization. Twenty-six registered scouts are now enrolled in the troop with five applications for membership under consideration. Richard Molpus is assistant scoutmaster. The scouts are now competing for a free trip to the camp which will be awarded to the troop member earning the highest number of points.

JUNE 7, 1951

Cpl. Ralph Thomas, son of Mr. and Mrs. T.R. Thomas of the Dixie Community arrived home from Korea. He has been in Japan and Korea for the past 3 1/2 years, with the 27th Infantry Regiment of the 25th Division. After spending a 30 day leave, he will report to Ft. Jackson, S.C. for reassignment.

Dan Jordan, twelve year old son of Dr. and Mrs. D.P. Jordan, was winner of a trip to the Indianapolis Motor Speedway Races in a contest sponsored by the Jackson Clarion-Ledger.

JUNE 8, 1961

George Wayne McKay and Mrs. Nellie Mildred McKay of Philadelphia, composed one of the four husband-wife combinations to receive degrees simultaneously during recent graduation exercises at

Mississippi Southern College. President R.C. Cook, singled out the dual achievements of Mr. and Mrs. McKay for special mention during the ceremony.

JUNE 11, 1971

Neshoba Democrat Editor, Stanley Dearman discusses the Democrat with former editor, Clayton Rand and former New York Times executive editor and Vice President, Turner Catledge. Catledge addressed the Mississippi Press Association at its convention. He was introduced by Rand, who was the editor for the Democrat from 1919-1925. Catledge began his newspaper career with the Neshoba Democrat at 14 years old. He worked under Rand and left Philadelphia in '22, and worked in many places such as New York, Baltimore, etc. He now resides in New Orleans.

JUNE 4, 1981

Phillip Gandy, pastor of Herbert Baptist Church, received a Bachelor of Science degree in bible from Southeastern Baptist Church in Laurel. He was selected as Who's Who Among Students in American Universities and Colleges in recognition of outstanding merit and accomplishment as a student.

JUNE 5, 1991

Those receiving baseball

awards at Neshoba Central are; John Herrington, best offense; Brandon Gray, best defense; Mark Stovall and Nathan Yates, captains; Thomas Allen, pitching award; Ryan Jim, coaches' award; Rickie Goldman, hustle award; Ricky John, batting award; Tommy Holland, most improved; and Chris Vowell, most valuable player.

JUNE 6, 2001

Grant McDaniel and Dana Apperson were recently recognized as outstanding band members in the eighth grade at Neshoba Central. They received a plaque, medal, and a certificate for outstanding service.

JUNE 8, 2011

Philadelphia Elementary School Principal, Lee Ann Fulton, was named Director of Curriculum and Assessment and Director of Federal Programs for the school district. Assistant Elementary School Principal, Jason Gentry was promoted to principal.

The seventh season of "Jobs for Life" celebrated graduation from the 16 weeks training program at City Limits Restaurant. The graduates are; Callie Smith, Natisha Thomas, Denese Seales, Ellen McDowell, Hattie Brown, Carolyn Young, and Mary Watkins.

PATRICK J. BUCHANAN

Kamala vs. Manchin

Manchin, who has the decisive Democratic vote in the Senate, opposes elements of the Dem's platform.

Speaking in Tulsa on the 100th anniversary of the racial atrocity there, Joe Biden belatedly turned to the issue of voting rights, to explain why he is having such difficulty winning passage of the party's priority legislation.

"I hear all the folks on TV saying, 'Why doesn't Biden get this done?'"

"Well, because Biden only has a majority of, effectively, four votes in the House and a tie in the Senate, with two members of the Senate who vote more with my Republican friends."

Biden was referring to Kyrsten Sinema of Arizona and Joe Manchin of West Virginia.

"But we're not giving up," Biden hastily added.

"Earlier this year, the House of Representatives passed For the People Act to protect our democracy. The Senate will take it up later this month, and I'm going to fight like heck with every tool at my disposal for its passage.

"To signify the importance of our efforts, today I'm asking Vice President Harris to help ... lead them. ... With her leadership and your support, we're going to overcome again, I promise you. But it's going to take a hell of a lot of work."

Thus did Biden designate Kamala Harris as his field commander in winning Senate passage of a voting rights bill that would cancel out many GOP victories in state legislatures in enacting voting reforms.

Sunday, Harris, who is also Biden's point person on the border crisis, went to Guatemala to learn what causes Latin American peoples of color to leave the land they were born in and travel 1,000 miles for a chance to live, work and raise their families in a nation established by and for white supremacists.

But when she returns, Harris will face a showdown — with Joe Manchin.

For Manchin, who has the decisive Democratic vote in

the Senate, not only opposes elements of the Democrats' voting rights bill. He has declared that ending the Senate filibuster would "be to destroy our government," and he will never cast a vote to kill it.

In April, Manchin was emphatic in The Washington Post, "There is no circumstance in which I will vote to eliminate or weaken the filibuster."

Yet, as long as that filibuster exists, 60 Senate votes are needed to pass major legislation. And if the filibuster is not eliminated, Democratic voting rights proposals don't have a snowball's chance of being enacted.

Hence, if Manchin is telling the truth and holds his ground, Harris is headed for a fruitless and failed assignment this June that will reveal her to be a leader without clout in the Senate whence she came.

Thus, in publicly handing Harris the portfolio on both the Democrats' voting rights bill and border crisis, Biden may have set up his vice president for a great fall and a major humiliation. Yet, Harris is said to have asked Biden for the assignment.

As for Manchin, he is sitting in the catbird seat in the Democratic Party. He holds the whip hand over both Majority Leader Chuck Schumer and Biden. For if the West Virginian refuses to bend or break on the filibuster, then not only will the voting rights bill fail in the Senate, so, too, could gun control, D.C. statehood, climate change, and immigration legislation.

All could suffer the same fate as the Jan. 6 Commission.

The Washington Post reports Senate staffers are saying that there is "panic" in the

Democratic caucus that Manchin will stand his ground and refuse to kill the filibuster, no matter the pressure the party puts on him.

Recognition by the White House of the leverage Manchin and Sinema wield was evident in press secretary Jen Psaki's effort to soften Biden's crack about "the two members of the Senate who vote more with my Republican friends."

Psaki brushed aside any suggestion that Biden was being caustic about the two senators saying, "I don't think he was intending to convey anything other than a little bit of commentary on TV punditry."

But the issues and stakes involved are becoming evident to everyone.

A coalition of progressive groups, on Thursday, called on Schumer to hold a Senate vote to kill the filibuster. More than 100 groups sent a letter to the majority leader arguing that the Republican senators who blocked a bill to create a commission to probe the Jan. 6 Capitol attack showed, "it is clearer than ever that the filibuster needs to be eliminated."

The groups added: "We call on you and the Senate Democratic caucus to eliminate the filibuster as a weapon that Sen. McConnell can use to block efforts to defend and strengthen our democracy and make our government work for the American people."

If Joe Manchin holds his ground this June, he will prevail, the filibuster will survive, the For the People Act will die a deserved death, and Joe will become legend in West Virginia.

And if Manchin stands his ground, the big loser is Kamala Harris.

Patrick J. Buchanan is the author of "Nixon's White House Wars: The Battles That Made and Broke a President and Divided America Forever."

RICH LOWRY

Biden revolution sputters before starting

It's finally dawned on President Joe Biden that he barely controls the House and the Senate.

His remarks last Tuesday taking a swipe at Sens. Joe Manchin of West Virginia and Kyrsten Sinema of Arizona were notable less for how they publicly aired an intraparty dispute than for their utter banality.

"I hear all the folks on TV saying, 'Why doesn't Biden get this done?'" he said, referring to himself in the third person in classic Washington fashion. "Well, because Biden only has a majority of effectively four votes in the House and a tie in the Senate, with two members of the Senate who vote more with my Republican friends."

Of course, he's completely right (except for the part about Manchin and Sinema voting with Republicans — they are reliable Democratic votes).

Not only is it true that Biden has narrow majorities, this is likely to be a defining feature of his presidency. Unforeseen events always take a hand, but it seems likely that one of the headlines at the end of the Biden years will be, "The president had vaulting ambitions, frustrated by razor-thin (and perhaps, temporary) legislative majorities."

Somehow, this was apparently passed over or brushed aside at Biden's session with liberal historians at the White House that focused on how he could be a transformative leader in the mold of FDR or LBJ.

And it didn't figure in the spate of wishful commentary around the time of the passage of the COVID-19 relief bill

It's finally dawned on President Joe Biden that he barely controls the House and the Senate.

that Biden was indeed on track to be the next FDR.

Of course, Franklin Roosevelt had a historic majority in the House and a healthy majority in the Senate, which were what made it possible for him to be FDR. Needless to say, he wasn't complaining that a couple of wayward Democrats were keeping him from doing anything shortly after the completion of his first 100 days.

The left's reaction to Biden's predicament is to blame Manchin for being so stubbornly supportive of the filibuster.

Rev. William J. Barber II, a civil rights leader, told The Washington Post in frustration, "They need to let Manchin understand we elected Joe Biden — not Joe Manchin — to be president." True enough, although many voters surely believed they were electing someone like Manchin as president — an old-school pragmatist who'd object at overturning a long-standing Senate practice in a headlong rush to try to match the legislative output of transformational progressive presidents.

Manchin has been the focus of attention on the filibuster, so much so that he's complained about reporters badgering him about it. Sinema, though, sounds equally adamant and there are other

Senate Democrats who would go along with it if the party decided to go nuclear, but have no enthusiasm for the idea.

Regardless, on a number of high-profile issues like the \$15 minimum wage and the H.R. 1 voting bill, Biden's problem isn't getting to 60 votes to overcome a filibuster. It's getting to 50 for a simple majority.

That the White House has been so willing to try to negotiate with Senate Republicans on infrastructure is probably a sign that it doesn't have 50 votes for the current Biden proposal, either.

There's no doubt that Biden is going to be able to spend a lot of money, although a new ruling from the Senate parliamentarian has dashed the hopes of Democrats that they might be able to use reconciliation — the budget process that bypasses the filibuster — multiple times this year.

But big, sweeping measures — like the voting bill, climate legislation and immigration changes — are out of reach absent a sea change.

A couple of months from now, it could be obvious that the highly touted Biden revolution is sputtering to a stop before it even gets started.

If so, the fault won't be Manchin's or Sinema's, or in our stars, but in the simple fact that Biden doesn't have enough votes in Congress — never did and never will.

Rich Lowery is editor of National Review, a leading conservative magazine founded by William F. Buckley.

LETTERS

The Democrat welcomes letters, comments or suggestions: Editor and Publisher Jim Prince
jprince@neshobademocrat.com

The Neshoba Democrat Publishing Co. Inc.
439 Beacon Street, Philadelphia, MS 39350
neshobademocrat.com
Telephone: 601.656.4000

BIBLE SELECTION

Before the mountains were brought forth, or ever you had formed the earth and the world, from everlasting to everlasting you are God.

— Psalm 90:2,4 (ESV)

Bridge replacement causes temporary traffic bottleneck

By STEVE SWOGETINSKY
steve@neshobademocrat.com

If you are using Highway 19 south to enter or exit Philadelphia, you might add 10 minutes or so to your trip.

The Mississippi Department of Transportation is in the process of replacing the bridge next to Bumpers. This has created a traffic bottleneck in that area.

If you are leaving Philadelphia in a non-commercial vehicle, the unofficial detour is to turn left onto St. Francis Drive, go up to the stop sign, turn right, and travel on Valley View Street past the Post Office onto Highway 19 south. It's the reverse if you are coming into town.

The official MDOT detour sends vehicles through Union to House.

The bridge was closed at the end of May and it is hoped the new bridge will be in before the start of the Neshoba County Fair.

Traffic is prone to back up at any time because of stop

signs but especially during the morning and evening commute hours.

Bennie Adkins watches it every day from his barber shop at the corner of Holland Avenue and St. Francis Drive.

"The stop sign stops the traffic," Adkins said. "They don't have anywhere to go.

"School isn't going on. It's not nearly as bad now as when there was school traffic. When it is quitting time, about 4 or 5 p.m., that's when it is the worst. And when you get these 18 wheelers coming through, it gets slow," Adkins said.

"A bunch of the 18 wheelers come through here. One flipped over in the ditch, trying to turn and another flipped over," he said.

When headed north on Highway 19 from Meridian, there is a detour sign advising trucks and cars to turn on Road 492 at House, right before the end of the four-lane. That will lead you to Union where you can turn north and enter Philadelphia on Highway 16.

"You have to put up with the



Motorists are told by officials to expect some traffic slowdowns on Highway 19 south due to bridge work.

traffic but that goes along with progress," said Adkins. "You know you have to do things, close roads and fix them. It hasn't bothered my business. But

when you leave, it might take you a few minutes to get back on the road."

Mayor James Young asked for the public's patience.

"We have extended the culvert to make the turn safer," Young said. "We haven't had any more incidents with trucks since we did that. But there

isn't much we can do about traffic.

"This makes you realize how much traffic comes in and out of the city in that area."

OBITUARIES

Buena Jean Jones

Buena Jean Jones (Taptto), 86, was born on August 12, 1934 to James and Francis (Bointy) Taptto in Lawton, Oklahoma. She passed away on May 25, 2021 at home surrounded by her loving family.



Buena Jones

She married the love of her life, Robert Wayne Jones, in 1952 at the Rainy Mountain Indian Church. Buena graduated from the University of Oklahoma with Masters Degree in Public Health Education and East Central University with Bachelors degrees in Nursing and Sociology. Buena worked for the Choctaw tribe in Philadelphia, Mississippi for 20 years as a Public Health Educator, and as a registered nurse in Ada for 15 years for the Chickasaw Nation.

She enjoyed reading and working on puzzles. Buena was a member of the Kiowa Tribe of Oklahoma.

She is preceded in death by her husband, Robert Wayne Jones; two sons, Robert Gene Jones and James Carroll Jones; parents, James and Francis Taptto; twin brother, Byron Bointy; two sisters, Thelma Stumblingbear and Audrey Carter.

She is survived by her 2 daughters: Shirley Tapp of Yukon, OK Lisa Jones of Mountain View, OK, 7 grandchildren: Eric Jemison of Medina, New York, William Birdtail and his wife, Sara of Yukon, OK, Stephanie Jones of Laurel, MS, Ashley Ware and her husband, Jake of Ada, OK, Audrey Morgan and her partner, Justin Northam of OKC, OK, Ciara Tapp of Yukon, OK, Jasmine Douglas and her partner Adonis Williams of Ada, Oklahoma, 9 great-grandchildren: William Birdtail, Landen Birdtail, Brent Printup, Chelsea Printup, Oliver Birdtail, Caroline Ware, Jonathan Ware, Lola Lopez, and August Northam, 2 sisters: Barbara Roberts of Las Cruces, NM, Marilyn Spottedhorse of Mountain View, OK

Graveside: 11:00 a.m., Saturday, May 29, 2021 Rainy Mountain Cemetery, Mountain View, OK

Under the direction of Ray and Martha's Funeral Home, Carnegie.

Judith Ann Lawrence McKay

On Tuesday, May 25, 2021, Judith Ann Lawrence McKay, mother of two children, step mother to three and "Mimi" to eight grandchildren, passed away one day after turning 77. Judy was born in Memphis, TN. On May 24, 1944 to Frederick Lopez Lawrence and Clara Henley Lawrence. Judy was a life long Memphian and a descendant of members of the founding party led by Andrew Jackson. The Lawrence brothers were surveyors who mapped the City of Memphis, with one going on to become the fourth Mayor of Memphis.

Judy was a member of the 1962 graduating class of eight at St. Mary's Episcopal School, the first of the modern era. From there she moved to Columbus, MS, where she attended the Mississippi College for Women.

Possessing boundless energy, Judy was a member of the Suburban Garden Club, The Le Bonheur Club, volunteer for the Oral School for the Deaf, a member of Germantown Baptist Church and Subsidium where she served as president in 1987. One of her passions was "antiquing" owning multiple booths with her best friend, Loree Jones, over several decades. Then of course, there was Christmas where her home on Carter's Grove became a subsidiary of Santa's workshop with every nook and cranny decorated.

No Christmas tree was large enough for a home with forty foot ceilings, until finally one year the mammoth tree tipped over and crashed narrowly missing mom Clara's bridge club luncheon that Judy was hosting. Later, the elderly ladies, having spent the afternoon playing cards and sipping from the stock of the full bar, hardly noticed the downed forty foot Northern Pine as they gayly filed out through the living room.

The year was 2000 when she would meet Kenneth William McKay through mutual friends Bob and Becky Schaeffer. They were smitten with one another from the beginning and would wed exactly one year later. Both had yearned for a "big family" and with a blend of four daughters and one son, they created instant gratification.

Judy is survived by the "Love of my Life" Ken and her children, Debbie Sodec (Jeremy), Birmingham, AL, Greg Campbell, Memphis, TN, grandchildren, John Henry Campbell, Cameron Sodec, Freddie Campbell and Cooper Sodec. In addition, step children, Michelle Warren (Chris), Marlow Harris (Jeff), Courtney Neal (Ryan) all of Memphis, TN, step grandchildren, Levi Warren, Tucker Harris, Summer Warren and Webb Neal, with numerous nieces and nephews.

She was preceded in death by her parents, and a brother, Frederick "Lin" Lawrence (Nina).

The McKay family would like to extend special thanks to all of Judy's health care givers during her journey. In addition, words cannot properly express our love and gratitude for Methodist Hospice Nurse, Tori Billings. Last, the family wants to recognize Sherran Kinney for her friendship, devotion and commitment to Judy and Ken during their time of need.

The family will receive relatives and friends on Tuesday, June 1, 2021 at 10:30 a.m. with a funeral service to follow at 11:30 a.m. in the Fireside Chapel of Memorial Park Funeral Home and Cemetery. Interment to follow at Memorial Park Cemetery. Memorial Park Funeral Home and Cemetery, 5668 Poplar Ave., Memphis, TN, 38119. (901)767-8930.

Kevin "Doda" Frank Savell

Funeral services for Mr. Kevin "Doda" Frank Savell was held 2 PM Saturday, June 5, 2021, at John E. Stephens Chapel with Rev. Shawn Holley officiating. Burial in Mt. Olive Cemetery (Stephentown). John E. Stephens Chapel in charge.

Mr. Savell, 56, passed away Wednesday, June 2, 2021, at Anderson Regional Medical Center in Meridian. He lived in Neshoba Co. most of his life where he was a carpenter. He was a member of New Pleasantdale Baptist Church. His hobbies and special interest were his family and friends.

Preceded in death by his wife, Carolyn Coffey Savell; mother, Carolyn Dunn Savell; sister, Stacy Ann Moore.

Survivors include, father, Frank Savell of Philadelphia; sons, Cody Savell (Shelby) of Pisgah, Kevin "Bubba" Coffey (Melissa); sisters, Rhonda Watkins, Tracy Dorman all of Philadelphia; brother, Rex Savell of Union; several nieces, nephews.

Pallbearers: Austin Holley, Jonathan Moore, Kameron Bryan, Austin Warren, John Hamilton, Chas Lashley.

Shelby Ward Breland

Services for Mrs. Shelby Ward Breland were Monday, June 7, 2021, at 1:00 p. m. from McClain-Hays Chapel with Dr. Mike Carr and Rev. Mike Miles officiating. Burial followed in the Linwood Cemetery. McClain-Hays Funeral Home was in charge of arrangements.

Mrs. Breland, 84, of Philadelphia, died Saturday, June 5, 2021.

She was a Neshoba County native and graduated from East Neshoba High School in 1956. She also attended East Central Junior College.

Mrs. Breland was a lifetime member of Trinity Baptist Church where she served as pianist for over forty years.

Survivors include sons, Steve Breland, Andy Breland, and Mike Miles, all of Philadelphia; seven grandchildren; eight great-grandchildren; and sister, Gail Ward Long of Union.

Mrs. Breland was preceded in death by husband, Kenneth; son, Kevin "S. C. Ward"; parents, T. C. Ward and Delma Smith Moorehead; and sister, Kay Ward Seale.

Steve Fowler

Services for Steve Fowler were Saturday, June 5, 2021, at 2:00 p.m. from McClain-Hays Chapel with Rev. Mack Alford officiating. McClain-Hays Funeral Home was in charge of arrangements.

Mr. Fowler, 78, of Brandon, died Tuesday, June 1, 2021.

A native of Laurel, MS, he lived in Philadelphia from 1980 until 2018, where he was owner/operator of Reliable Insurance Company. He was a resident of Brandon since 2018. Mr. Fowler was a member of Henry's Chapel Church.

Survivors include son, Shane Fowler of Brandon, MS; stepson, Eddie Gilmer of Rose Hill, MS; stepdaughter, Sheila Madison of

Philadelphia, MS; four grandchildren; two great-grandchildren; sisters, Mary Waltman of Houston, TX, and Sylvia Wicker of Austin, TX.

Preceding Mr. Fowler in death were his wife, Peggy Fowler; son, Scott Fowler; parents, Inman O. and Anita Hardin Fowler.

Fred Keeton McEachin, Jr.

A graveside service for Fred Keeton McEachin, Jr., was held Wednesday, June 2, 2021, at 2:00 p.m. from Eastlawn Cemetery with Dr. Owen Gordon officiating. McClain-Hays Funeral Home was in charge of arrangements.

Mr. McEachin, 83, of Philadelphia, MS, died Tuesday, June 1, 2021, at Martha Jo Leslie State Veterans Home in Kosciusko.

He was a native and longtime resident of Philadelphia, MS. He served two tours of duty with the Army in Vietnam and was a member of the American Legion and VFW. Mr. McEachin was a member of the First Presbyterian Church in Philadelphia.

Survivors include nieces, Debbie N. Hodges (William) of Philadelphia, MS, Dawn N. Stewart (Allen) of Fulton, MS, and Leah N. Chancey (Heath) of Birmingham, AL.

Preceding Mr. McEachin in death were his parents, Fred, Sr., and Lena Pearl McEachin; and sister, Jean McEachin Adkinson.

Marty Joe Williams

Funeral service for Mr. Marty Joe Williams was held 2 PM Tuesday, June 8, 2021 at John E. Stephens Chapel with Rev. John E. Stephens officiating. Interment in Ocobla Baptist Cemetery.

Marty, 51, passed away Friday, June 4, 2021 at Neshoba County General Hospital. He lived in Neshoba County all of his life. He worked at Biewer Sawmill in Newton, MS. His hobbies include Nascar, fishing and Ole Miss football. Marty was Baptist.

Preceded in death by his father, Charles K. Williams; infant brother, Gregory Keith Williams.

Survivors: Companion, Daphne James of Philadelphia; Daughters, Christian Williams of Miami, FL and Erica Williams of Union; Son, Austin Williams; Mother, Marlene Williams both of Philadelphia; Sister, Barbara McPherson (Randall) of Leland,

MS; (2) Grandchildren; nephew, aunts, uncles, cousins and other relatives.

Pallbearers: Darron Smith, Scott Apperson, Justin Houston, Michael Vaughn, Steven Williams, Stephen Clark; Posthumously Brad Houston and Chris Pinter.

Tammy K. Carroll

Private memorial services for Mrs. Tammy K. Carroll will be held at a later date. Mrs. Carroll, 57, passed away Saturday, June 5, 2021 at her residence. She lived in Neshoba County most of her life. She was a registered nurse and enjoyed her grandchildren and crocheting.

Mrs. Carroll was preceded in death by her parents, Fred & Betty Skeen; sisters, Bonnie Dees and Linda Watkins; Survivors are her husband, Dwayne "Alabama" Carroll of Philadelphia; daughter, Amanda Carroll of Philadelphia; son, Andy Carroll of Philadelphia; sister, Alice Sowell of AL; (2) Grandchildren.

Leonard Kendall

Graveside services for Mr. Leonard Michael Kendall were held on Monday, June 7, 2021, at 11 A.M. from Decatur M.B. Church Cemetery in Decatur, MS, with Rev. Terry Anderson officiating. Beck Funeral Home, Inc. was in charge of arrangements.

Mr. Kendall, 69, of Decatur, passed away on Wednesday, June 2, 2021 at Baptist Medical Center in Jackson.

He is survived by his wife, Connie Kendell of Decatur, MS, two children, Shana Kendall of Decatur, MS, and Timothy Harrison of Stonewall, MS, one two grandchildren.

Caleb "Buck" Lewis Carter

Caleb "Buck" Lewis Carter, 15, born on October 10, 2005 passed away Sunday, June 6, 2021. Visitation will be on Wednesday, June 9, 2021, from 4:00 PM until 9:00 PM and Thursday, June 10, 12:00 PM until 1:50 PM at New Liberty Baptist Church. Services will be at 2:00 PM on June 10, 2021, at New Liberty Baptist Church with Bro Paul Smith, Bro Jonathan Hynes and Mack Ginn

JOHN E. STEPHENS CHAPEL FUNERAL SERVICES

MR. KEVIN SAVELL
2 PM SAT., JUNE 5, 2021
JOHN E. STEPHENS CHAPEL
MT. OLIVE CEMETERY-STEPHENTOWN COM.

MR. MARTY JOE WILLIAMS
2 PM TUES., JUNE 8, 2021
JOHN E. STEPHENS CHAPEL
OCOBLA BAPTIST CEMETERY

MRS. TAMMY K. CARROLL
PRIVATE MEMORIAL SERVICE

812 Pecan Avenue • P.O. Box 34
Philadelphia • 601-656-1515
www.johnestephenschapel.com
Our Family Serving Your Family

THE LORD'S DAY
Morning Worship 11:00 a.m.
Sunday School (All Ages) 9-45 a.m.
Wednesday Evening Activities
Family Night Dinner 6:00 p.m. (Fellowship Hall)
Bible Study and Prayer Service 7:00 p.m. (Sanctuary)
Children's Program 7:00 p.m.
First Presbyterian Church of Philadelphia
"For from Him, and through Him, and to Him are all things. To Him be the glory forever."
533 Main Street • 601-656-4312
Pastor David Stormont
Presbyterian Church in America (PCA)

Beck Funeral Homes & Cremation Services
MR. LEONARD MICHAEL KENDALL
GRAVESIDE SERVICE
11 A.M. MON., JUN. 7, 2021
DECATUR M.B. CHURCH CEMETERY, DECATUR
MR. JOHNNIE CLAYBORN -ARRANGEMENTS INCOMPLETE-

officiating.

Caleb was a lifelong resident of the Branch Community and was a member of the New Liberty Baptist Church. Caleb "Buck" just finished the 9th grade at Morton High School. He excelled in football at Morton High School and East Rankin Academy. Caleb's love was fishing, mud riding and rodeoing where he loved to ride bulls. He was a member of the Mid-South Little Britches Rodeo Association and a former member of the MS Junior High Rodeo Association where he was a roper and last year in 2020 he was the Reserve World Champion Breakaway Roper, 3 time State Flag Racing Champion, countless buckles in roping, barrel racing and he had 1 Pole Bending Buckle.

In the summertime he worked as a truck driver and equipment operator for his father and grandfather at Morton Construction. He loved to aggravate his big sister, aka Little Mama. Caleb was a Mama's boy, always giving his mother Bear Hugs.

Caleb was preceded in death by grandfather, Roger Lewis Carter, Sr. and brother, Dallan Griffin. He is survived by his parents Michael Carter (Casey Smith) of Morton, MS and Tanya and Christopher Shoemaker of Morton; Paternal Grandmother, Hattie Faye Carter of Madison, MS; Maternal Grandparents Barbara Boswell, Larry and Cathy Griffin of Morton, MS; Maternal Great Grand Mother Lavern Griffin of Morton, MS; five sisters Shyanne Burt (Tyler) of Pueblo, CO, Alex Shoemaker of Tucson, AZ, Carly Shoemaker of Richland, MS and Lily Shoemaker of Richland, MS.; a host of Aunts, Uncles, Cousins and Friends.

Pallbearers are Jerald Bierman, Scott Hindam, Pete Munn, Keith Partridge, Tanner, Munn and Lincoln Gatwood. In lieu of flowers, memorials to Morton High School Football Team c/o Coach Sean Gerald. You may sign the online guestbook at our website, www.wolfffuneralservices.com

MR. FRED KEETON MCEACHIN, JR. GRAVESIDE SERVICE JUNE 2 EASTLAWN CEMETERY
MR. STEVE FOWLER SERVICES JUNE 5 MCCLAIN-HAYS CHAPEL
MRS. SHELBY WARD BRELAND SERVICES JUNE 7 MCCLAIN-HAYS CHAPEL INTERMENT LINWOOD CEMETERY
Member THE ORDER OF THE GOLDEN RULE
McClain-Hays Funeral Home
601-656-1212
www.mcclainhays.com

McClain-Hays Funeral Service
(601) 656-1212
1002 E. Main St. • Philadelphia

TIGERCAT MORBARK McLENDON TRAILERS
B&G EQUIPMENT, INC.
10430 Road 383
Philadelphia, MS 39350
(601) 656-7011

Blake's Seafood
Located across from Walmart
601-575-5500

JONES BODY SHOP
10160 Hwy 482 • Philadelphia 39350
601-656-8854
Jimmy Ray Jones, owner
Chad Jones

Outdoor Products
Parts, Sales, Service
2172 Lewis Avenue S Philadelphia, MS • 601.656.2568
Web: nhc.outdoorproducts.com • E-Mail: retail@nhc.com

Hospital Discount Drugs
919 Holland Ave.
656-2621

TCBY SUBWAY
Present this coupon for \$2.00 OFF A
12" Sub w/ \$1.00 OFF a Foodlog Sub
At Regular Price • Good At All Three Locations
Open 7 Days A Week
601-389-0020

PerformanceTherapy
Comprehensive care • Hands-on treatment • Proven results
TWO LOCATIONS TO SERVE YOU:
600 Elm Street Carthage 601-267-3241 • Fax: 601-267-0209
180 Canal Place Philadelphia 601-656-0002 • Fax: 601-656-9902

PSI 656-4401
PHILADELPHIA SECURITY INSURANCE
802 Kosciusko Road
"All forms of insurance"

PRINCE OIL & CO. CITGO
150 Hospital Road, Philadelphia
601-656-4343 | 1-800-782-6616

"But he that shall endure unto the end, the same shall be saved."
— Matthew 24:13 (KJV)

The Citizens Bank
Proudly serving Abbeville, Forrest, Harrison, Lafayette, Lumb, Lauderdale, Leake, Jackson, Kemper, Neshoba, Newton, Oshtemo, Rankin, Scott and Winston counties.
www.thecitizensbankphila.com

ALFA INSURANCE LEE ROBERTSON Agent
318 CHURCH AVENUE PHILADELPHIA, MISSISSIPPI 39350
601.656-0119 • mrobertson@alfainsurance.com
AUTO ■ HOME ■ LIFE ■ BUSINESS

GIA GARDNER'S INSURANCE AGENCY
P. O. Box 188 • Union • 774-8202

CHOCTAW OFFICE SUPPLY, LLC
388 Industrial Rd. Suite A • P.O. Box 6276 • Choctaw, MS 39350
Office (601)656-4521 • Fax (601)656-9327 • Toll Free: 800-264-2681
www.choctawofficesupply.com

Weyerhaeuser
"The future is growing"

YATES BUILDING SUPPLY
601-656-3065
406 South Lewis Avenue
Philadelphia, Mississippi 39350

MLS DEVELOPMENT
601-504-7520
Commercial-Residential Construction

Getting the Message/Rev. Chris Shelton

Hell is a place of gnashing of teeth

There is no more surprising conversion than Saul of Tarsus. He changes from a creature with tireless zeal to persecute the church to a man whose ministry had more far-reaching effects than any other in Christian history.

The apostle Paul will later describe his pre-conversion nature as one of "raging fury" against Christians. He had a hellish disposition. Jesus taught that hell is a place of gnashing of teeth and darkness. Saul is described this way. In Acts 8:3, he was "ravaging the church," an expression of a wild beast tearing a body apart.

In Acts 9:1, he is "breathing threats and murder against the disciples of the Lord." After he is converted, "something like scales fell from his eyes," indicating that he was a man who was blind to the spiritual life of God (verse 18).

Sin gives us a taste of hell. All men suppress the truth of God in order to protect their sin, whether it is vanity, immorality, or anything in between. Saul attacked the church because it proclaimed the truth of God, and commanded people they must repent. This message was good news because for Saul because he was headed for destruction, but it meant he was wrong about how he was living.

He was a legalist, and that spirit boasts in its own righteousness. It generates more anger, more indignation toward God and men. Jesus said the converts of the Pharisees were made twice more the children of hell as a result of the teaching they received. And Saul was the most dedicated Pharisee.

But the Lord was gracious to Saul. The conversion of Saul encourages the worst sinner that Christ is sufficient for you. Paul will say that he is a standing example of mercy to the worst of sinners (1 Timothy 1:16). It is the kindness of God that leads you to repentance and life in Christ.

When we look at Paul's conversion, we should remember that people come to know Christ in different ways. Timothy grew up learning of Christ from his mother and grandmother. The Ethiopian eunuch was unexpectedly joined by Philip to point him to Christ. The Samaritans disliked Jews, but a Jewish man brought the gospel to them, and many were converted.

What is true of every Christian is that the best providence in their lives is that by which God brings the gospel to them, and they hear and believe. John Flavel wrote of conversion: "In nothing does providence shine forth more gloriously. You are more beholden to him for this than for all of your other mercies. I cannot but think that your heart must be deeply affected by the thought of it. It is certainly the sweetest history ever told."

Saul was interrupted in his path to destruction by the light of Christ. As the light from heaven shone around the shepherds at Christ's birth, so the light suddenly shone around Saul, knocking him to the ground (Acts 9:3). An element of conversion is that the Spirit of God enlightens the mind to knowledge of Christ.

In 2nd Corinthians 4, Paul equates the conversion of a soul to the work of God in creation: "God said 'Let there be light', or 'Let light shine out of darkness.' This light will promote the exaltation of Christ, his person and work. His place in our heart will correspond to how we see his exaltation."

This soon became evident in Saul. Already he begins to pray to Christ. When the Lord tells his servant Ananias to go and seek Saul, Ananias is hesitant because he is all too familiar with the murderous ambitions of Saul. But the Lord said of Saul, "Behold he prays (verse 11)." Charles Spurgeon wrote one of his most well-known sermons on this verse about genuine prayer.

Saul went from desires to persecute Christ to praying in his name. Saul, as a Pharisee, would have prayed for hours a day. Pharisees were exceedingly disciplined in knowing the Scriptures and practicing all the spiritual disciplines such as praying. But legitimate prayer is only through Christ. He alone gives us access to the throne of God.

Now instead of being a child of destruction, Saul is a child of God. He no longer had hateful desires, but his soul thirsted after the living God. What he did, he now did in view of the mercies of God. Paul would say, "The life I now live I live by faith in the Son of God, who loved me and gave himself for me."

This Devotional and Directory is made possible by these businesses who encourage all of us to, attend worship services. If your church is not listed this week, please look in next week's edition.

EPISCOPAL ST. FRANCIS EPISCOPAL, Saint Francis Dr., 656-2938
JEHOVAH'S WITNESSES KINGDOM HALL OF JEHOVAH'S Hwy. 16 E., 656-9986
PENTECOSTAL BETHLEHEM PENTECOSTAL 18010 Hwy. 25 S., 662-724-4179
FIRST PENTECOSTAL 1104 Kosciusko Rd., 656-3290
FIRST PENTECOSTAL CHURCH OF HOUSE 656-3303
MCCLAIN CHAPEL, PENTECOSTAL Off Hwy. 16 E., 656-4459
NEW ZION PENTECOSTAL 11421 Road 387, 656-5665
NORTH BEND UNITED, PENTECOSTAL 14541 Hwy 21 N., 601-656-7824
NORTHSIDE PENTECOSTAL 10170 Rd. 561, 601-575-2100

SMALLWOOD PENTECOSTAL RR 8, Box 183, 773-8677
PRESBYTERIAN CAROLINA PRESBYTERIAN Rd. 123, Dowdville comm., 656-2556
FIRST PRESBYTERIAN 533 Main St., 656-4312
OTHER BOGUE CHITTO INDIAN MISSION Hwy. 491, 285-6739
CARVER AVE. NON-DENOMINATIONAL CHURCH 251 Carver Ave., 656-5248
CHRISTIAN LIFE TABERNACLE 17261 Road 602, 656-1201
DEEMER CHURCH OF JESUS NAME 1624 Road 505, 656-8700
FAITH FELLOWSHIP 1006 E. Main St., 656-8722
FAMILY WORSHIP Hwy. 15 N., 656-5600

GOD'S TABERNACLE 929 Loper St., 656-3565
HOLY ROSARY INDIAN, MISSION 10131 Holy Rosary Rd., 656-2880
JERUSALEM TEMPLE 414 Ivy St., 656-5339
THE WORD OF GOD CHURCH 231 Line Ave., 575-1942
MACEDONIA REVIVAL, CENTER 14050 Hwy. 19 N., 656-3634
PEARL RIVER MENNONITE CHURCH 13301 Hwy. 16 W 562-5274
PHILADELPHIA CHURCH OF LORD 1029 Road 383, 656-0201
SANCTUARY MINISTRIES, Hwy. 16 E. (Next to Bobby's Country Store) 663-6310 or 601-663-6290
BAPTIST ANTIOCH BAPTIST 10791 Road 4306, 986-8771
BEACON STREET BAPTIST 895 W. Beacon St., 656-4620
BEATLINE BAPTIST 13180 Road 505, 656-9216

PHILADELPHIA AUTO SALES
261 W. Beacon St. Philadelphia 601-656-0000
philaautosales.com

West Side Body Shop Inc.
20 Water View Lane Philadelphia, MS 39350
COMPLETE COLLISION REPAIR AND TRUCK ACCESSORIES
OWNER: CHRIS JONES
westsidebodyshop@bellsouth.net

ATWOOD
Personal Care for Your Loved One
Respite Services • Hospice • Palliative Care • Home Care • Adult Day Care • Alzheimer's Care • Dementia Care

Beck Funeral Home, Inc.
Robert A. Beck, Sr.
226 North Street - Louisville, MS 39339
Phone: (601) 773-3281 • Fax: (601) 773-3349
E-Mail: beck@becksouth.net Website: beckfuneralhome.com

Dirt Cheap 30% to 90% off every day!
528 North Church St. Louisville 716 Pecan Ave. Philadelphia 921 Hwy. 35 S Forest
2300 N. Frontage Rd. Meridian 501 Hwy. 16 W Carthage

Neshoba Co. Animal Hospital
Dr. Thomas W. Tischer
641 E. Main Street Philadelphia, MS 39350
(601) 656-6692
Hours: M-F 7:30 AM - 6:00 PM Sat 7:30 AM - Noon
"All creatures great and small, the Lord God made them all"

NESHOB GENERAL
1001 Holland Ave Philadelphia (601) 663-1200

Stribling Drug Store PHARMACY
430 Beacon St., Philadelphia
Phone 601-656-2472

Byars Furniture Company
La-z-Boy • Ashley • Serta • Universal • Riverside
319 Byrd Avenue • Philadelphia
601.656.1802
www.byarsfurniture.com

Craig Martin, D.M.D. General Dentistry
1001 E. Main St. Philadelphia
601-656-3366

HILL REAL ESTATE GROUP, LLC
Residential • Commercial • Lots & Acreage • Property Management
PHILADELPHIA
325 BYRD AVE. 601-389-0003
GoHillPhilly.com

Beehive HOMES
Quality Senior Living in a Residential Setting
"The next best thing to home"
Amy Pilgrim, Manager
708 Columbus Ave • 601-656-0220
beehivehomes.com

812 JOHN E. STEPHENS CHAPEL Pecan Ave.
FUNERAL SERVICES **656-1515**

i'm lovin' it
We Enjoy serving you in Philadelphia, Forest, Newton, and Meridian
739 Hwy 119 W. Meridian, MS 39367 Fax: 601-453-6161

MARKET PLACE
Our Family Serving Your Family Since 1945

David Wayne's Small Engine Repair
14520 Road 505 • Philadelphia • 601.656.9929
STHIL • EXMARK • TORO • HUSQVARNA
For service after the sell

Griffis DODGE Jeep
1012 Holland Ave.
601-656-4244/800-748-8962
griffismotors.net

SONIC America's Drive-Ins
601-656-5250
1/2 price soft drink everyday from 2 - 4 p.m.

M&S Furniture, Inc. | M&S Second Shop
Kristi McCown and Scott Skinner
656-8114/656-9359/mandsfurniture.net
1103 E Main St. • Philadelphia, MS

"Therefore, if anyone is in Christ, the new creation has come: The old has gone, the new is here!"
— 1 Corinthians 5:17 (NIV)

GENERATIONS CARE, LLC
DECATUR, MS OFFICE: 601-635-3012
STARKEVILLE, MS OFFICE: 662-465-7519/662-617-8200
www.GenerationsCareLLC.com
ADULT SITTING / HOMEMAKERS / PERSONAL CARE
ERRANDS & TRANSPORTATION / HOUSE CLEANING

A Bank For All The People. COMMERCIAL BANK
Briarwood • Collinsville • DeKalb Meridian • Philadelphia

Deals
539 East Main St. • Philadelphia
601-656-9331
www.dealsdiscountstore.com
Dennis Bartholomew, owner

piggly wiggly Joe Williams Owner
Piggly Wiggly of Collinsville
9095 Collinsville Rd. 601.626.8880
Collinsville, MS 39325 601.527.4010

JEROME TANK SEASON 2 SEASON PHILADELPHIA, MISSISSIPPI
YOUR UNIQUE SHOPPING PLACE
Jerome & Linda Tank • Owners
Ph: 601-656-7104

Serving Philadelphia since 1965
TOLBERT CHEVROLET BUICK
1040 W. Beacon St.
601-656-4802

State Farm
Rance DeWitt, Agent
434 Myrtle Street E, Philadelphia
Bus: 601.656.2481 | Fax: 601.656.2546
rance.dewitt_wd@statefarm.com
The greatest compliment you can give is a referral.

TERRY L. JORDAN ATTORNEY AT LAW, PLLC
Ms. Peggy Barber, Office Manager
420 Saw Blossom, Jeter • Two Shiloh, Greater East • Philadelphia, Mississippi 39316
Phone: 601.656.1451 • Fax: 601.656.2948
email: t.jordan@tjordan.com

JIM ARNOLD ATTORNEY AT LAW
435 E. Beacon St. Philadelphia, MS 39350
601-656-6914 • 662-653-6448
arnoldjh@bellsouth.net

Business Services Bookkeeping, Payroll, Taxes, Advice
H&R BLOCK
Canal Place Shopping Center
242 Canal Ave.
Philadelphia, MS 39350
601-656-7470, 601-656-0043 Fax

Deputies charge 3 with felony meth after traffic stop

By DUNCAN DENT
duncan@neshobademocrat.com

A Sunday night traffic stop on Highway 16 west netted three meth arrests.

Zane Callahan, 31, of 3484 Weir Highpoint Road, McCool, was arrested and charged with felony possession of a controlled substance, felony uttering a forgery and misdemeanor posses-

sion of marijuana in a vehicle.

Billy Frank Burchfield, 31, and Aubree Reagan Rawson, 29, both of 3786 Attala Road, Kosciusko, were passengers in the vehicle with Callahan.

Burchfield was arrested and charged with felony possession of a controlled substance and false ID information and possession of marijuana in a vehicle,

both misdemeanors.

Rawson received a felony charge of possession of a controlled substance and misdemeanor possession of marijuana in a



Zane Callahan



Billy Burchfield



Aubree Rawson

vehicle.

All three remained in the Neshoba County Detention Center on Monday afternoon.

The arrests stem from a traffic stop made by deputies on Sunday, June 6.

Sheriff Eric Clark said that deputies encountered a white Chevrolet Equinox driven by Callahan.

Burchfield and Rawson were identified as passengers and found to be in possession of felony amounts of drugs. Clark said that all the drugs seized appear to be methamphetamine.

Clark said that anyone with any information on crimes or potential crimes is encouraged to please call Crime Stoppers at 8550-485-8477.

Road 210 bridge load limit at 3-ton max pushing SUV limit

By STEVE SWOGETINSKY
stevs@neshobademocrat.com

Neshoba County Sheriff Eric Clark is reminding people who are traveling in the southwest part of Neshoba County that the Road 210 bridge may be reopened but it has a 3-ton weight limit.

The bridge, which overpasses the non-used Kansas City Southern Railway connector running from Union to

Sebastopol, was closed earlier this year, causing an 11-mile detour.

The road, also known as Ideal Store Road and the Union-Madden Road, is a main thoroughfare from Union to west Neshoba County to Walnut Grove in Leake County.

Neshoba County moved quickly to make temporary repairs. Engineers checked the bridge and it is considered sound, according to County

Administrator Jeff Mayo. It will have to be replaced at an expected cost of nearly \$2 million. Meanwhile, engineers recommended that the 3-ton limit be placed on the bridge.

The bridge was re-opened in May.

Sheriff Clark said he received reports from people living in the area that 18 wheelers and heavy vehicles weighing more than 3 tons were using the bridge.

"I did a little research on it to determine statutory authority and talked to the engineer about the weight limit," Clark said. "A family-sized SUV full of fuel and passengers would be at capacity. A Ford Expedition weighs 5 1/2 tons."

Clark said he talked with the chief law enforcement officer of the Mississippi Department of Transportation and received some guidelines.

The local MDOT officer met

Clark and his deputies with a scale at the bridge and checked the weight on some of the vehicles coming across.

"We were trying to educate the public on what a 3-ton weight limit was," Clark said. "No citations were issued. We wanted people to understand how low that weight limit was."

Clark said that he questioned whether two cars could pass on the bridge at the same time and

not surpass the weight limit.

"This is pretty much setting everyone up for failure," Clark said. "A lot of people are going to exceed the weight limit."

Clark said it is his job to enforce the law and he doesn't pick and chose what laws to enforce.

"We are not trying to harass anyone," Clark said. "We are trying to bring awareness about the weight limit."

Remote cameras give Sheriff's deputies an extra set of eyes

By STEVE SWOGETINSKY
stevs@neshobademocrat.com

The Neshoba County Sheriff's Department has a couple of extra eyes available to monitor potential trouble spots.

The Board of Supervisors during their regular meeting on Monday approved a six-month service subscription with Covert Cameras for the sheriff's department at a cost of \$264.

Sheriff Eric Clark said the cameras keep tabs on possible trouble areas when no one is around.

"We have a couple of cam-

eras that allow us remote access," Clark said. "They actually send us photos to our phone that we can use for surveillance."

For example, the cameras might be placed around a dumpsite in the county where people are littering or leaving garbage. Another use would be to keep an eye on a church that has been broken into a time or two.

"We use it as a tool to monitor activity in an area of concern," Clark said. "I had a church that was repeatedly being broken into. We installed the camera to find out what kind

of activity we were having when no one was there."

The cameras are not new and are now being utilized, Clark said.

In other matters during Monday's meeting, supervisors voted to take the following actions:

- Approve an interlocal agreement between the Sheriff's Department and the Neshoba County Schools to provide resource officers for the 2021-2022 school year;
- Accept the meal log and the detailed billing report from the jail. Supervisors accepted one

resignation from the jail and approved the hiring of Jacob Melton as a jailer. Supervisors approved 50-cent-per-hour raises for four jail employees who completed their Correctional Officer Certification training;

- Approve a road crossing request from Central Water Association on Road 743;
- Approve a request from the Circuit Clerk's Office for the removal of a Toshiba E-455 Copier being used in the Election Commission office;
- Approve requests from the Neshoba County School District for five loads of sand and

two loads of gravel. Supervisors also received the district's audit report from Fiscal Year 2020 which ended June 30, 2020;

- Approve a request from the Philadelphia/Neshoba County Career Technical Center to trim limbs hanging over the fence line;
- Approve travel requests for Emergency Management personnel to attend the MEMA District 6 quarterly meeting in Decatur on June 17, and the District Fire Coordinator Meet-

ing at Lake Tiak-O'Khata on Aug. 4;

- Approve paying the following out of order claims to CenterPoint Energy for work at the DHS office, \$40; the Court-house, \$858, the Justice Court, \$28, and the old Jail \$42;
- Accept the Purchase Clerk's report for May and the claims docket for June 7, 2021;
- Accept Weyerhaeuser's application for exemption of ad valorem taxes for 2020 totaling \$1,205,544.

COUNTY JAIL DOCKET

Winston County Jail Docket for Philadelphia Police arrests from 5/31-6/6

- Michael Bryant, 29, of 11633 Rd 383; rape-assault with intent to ravish
- Chelsey A Collins, 27, of 10452 Rd 610; trespass-after notice of non-permission, simple assault-attempt by physical menace to create fear
- Brenda F Davis, 43, of 830 Chestnut St; DUI-1st offense, simple assault-causing bodily injury
- Thomas Grayson, 22, of 1773 Bunk Newell, Meridian; aggravated assault-use of deadly weapon
- Darayus M Harris, 33, of 276 Carver Ave; contempt of court-municipal court, disorderly conduct-failure to comply with request or command of law enforcement officers, disorderly conduct-disturbance of family
- Thurman P Isaac, 57, of 124 Thompson Rd; public drunk
- Rocky I Isom, 30, of 82 Miles Rd, Conehatta; civil contempt-failure to appear or complete jury service
- Tyler B Kelly, 30, of 10161 Bounds Ave; contempt of court-municipal court
- Nikki Landrum, 33, of 10051 Rd 1345; possession of controlled substance
- Demarius T Lee, 20, of 8062 Ebernizer Rd, Carthage; contempt of court-municipal court
- Roderick D Miller, 40, of 166 Hillcrest Circle; bench warrant-chancery court
- Jamie L Poole, 31, of 1103 Tank St; DUI-1st offense
- Cole Reeder, 38, of 80677 Smithville Rd, Smithville; fleeing or eluding law enforcement officer in a motor vehicle-results in serious bodily injury to another, MV-driver's license-none, MV-reckless driving, MV-improper equipment
- Jennifer P Roberts, 51, of no address listed; controlled substance-possession of paraphernalia, public drunk, contempt of court-municipal court
- April Shannon, 39, of 12310 Rd 325, Union; possession of controlled substance
- Derricka Summers, 24, of 174 Main St, Walnut Grove; malicious mischief-misdemeanor value under \$1000
- Zayquoa Z Talley, 24, of 250 Hayes St; controlled substance-simple possession of marijuana-less than 30 grams, contempt of court-municipal court
- Anna B Williams, 28, of 1306 Kosciusko Rd; malicious mischief-felony value over \$1000 but less than \$5000, stalking/harassing

et for 5/31-6/7

- Charley Dewayne Alexander, 51, of 127 Meminn Cir, Louisville; failure to appear
- Patrick Barnett, 31, of 10200 Hwy 491 N Apt 4, Collinsville; hold for investigations, possession of controlled substance, possession of paraphernalia
- Candace Lynn Barton, 31, of 10481 Rd 244, Union; possession of controlled substance, possession of paraphernalia
- Billy Frank Burchfield, 31, of 3786 Attala Rd, Kosciusko; possession of controlled substance, possession of marijuana-vehicle, false ID information
- Zane Callahan, 31, of 3484 Weir Highpoint Rd, McCool; possession of controlled substance, possession of marijuana-vehicle, uttering forgery
- Steven P Copeland, 30, of 78 Copeland Ln, Preston; no charges listed
- Ike S Creighton, 33, of 10361 Rd 567; domestic violence simple assault-1st, disturbance of family 1st-domestic violence, possession of paraphernalia, possession of controlled substance
- Misty Dawn Cumberland, 44, of 10961 Rd 616; hold for investigations
- James Michael Franklin, 25, of 10491 Hwy 21 N; hold circuit court
- John A Gilbert, 44, of 1041 Rd 260, Union; petit larceny-less than \$1000.00 X2, littering, trespassing X2
- Steven Dustin Goforth, 40, of 13951 Hwy 486; hold for investigations, grand larceny-more than \$1000.00
- Tyrone Grove, 36, of 384 Jericho St; possession of controlled substance X2
- Tydrick Deshun Jackson, 21, of 10271 Apt 103; contempt of court, possession of marijuana-vehicle
- Danisha L Marshall, 25, of 10061 Rd 1728; failure to appear
- Lakeisha McWilliams, 34, of 10351 Rd 610; possession of controlled substance, disturbance of family, possession of paraphernalia, disorderly con-

- Tyasia McCoy, 31, of 305 Pearl Ave 27; possession of a stolen firearm, possession of marijuana-1st offense
- Kwanza Alexe Overstreet, 25, of Philadelphia; possession of controlled substance, possession of marijuana-1st offense, driving under the influence other substance, possession of paraphernalia
- Pamela Estell Pilgrim, 42, of 12541 MRd 325, Union; possession of controlled substance, contempt of court, disorderly conduct
- John Pope, 29, of 10041 Rd 634; possession of marijuana-vehicle, driving under the influence-1st offense
- Aubree Reagan Rawson, 29, of 3786 Attala Rd 5047, Kosciusko; possession of controlled substance, possession of marijuana-vehicle
- Raymanuel Tadise Seales, 42, of 401 Austin St; hold for other agency
- Lindsey Smith, 35, of 10031 Rd 394; hold for investigations, petit larceny-less than \$1000.00, grand larceny-more than \$1000.00, forgery-under \$500.00
- Van'Dairrick Audette Spears, 25, of 5112 Mercy Seat Rd, Hazlehurst; public drunk
- Maleisa Gail Springwater, 22, of 172 Cemetery Rd; contempt of court, possession of marijuana-vehicle, possession of paraphernalia
- Kadeem Thomas, 28, of 128 Hillstreet Cir, Louisville; possession of marijuana-vehicle, possession of controlled substance, possession with intent to distribute X4
- Albert DeWayne Thompson, 30, of 1610 13th Ave, Meridian; contempt of court
- Ryan Miller Tucker, 35, of 14125 CR 21 N, Winfield, AL; public drunk
- Brandon J Wheatley, 29, of 659 Chesapeake Dr; driving under the influence-1st offense
- Lauren White, 20, of 10900 Rd 616; hold for investigations, no charge
- Sesaun Williams, 38, of 142 Tapasha Hina Flota; failure to appear

- Jesse Williamson, 42, of 10125 Rd 187; failure to appear X2, no drivers license
- Adrian Keith Willis, 38, of 123 Duplex, Choctaw; failure to appear



IT'S NOW ROLLING IN FROM THE CHICAGO MARKET SHOW

JUST IN - CURTAINS: LIVING & BEDROOM - KITCHEN & BATH - SHOWER CURTAINS • PILLOW COVERS • BATH & HAND TOWELS • KITCHEN TOWELS • BATH CLOTHS • BLACK-OUT CURTAIN

HOUSEHOLD ITEMS - TOYS - BATHROOM RUG SETS - CANDY - HARDWARE RELATED ITEMS - COIN WRAPPERS & MORE

DUE IN NOW! OIL BURNERS & OIL - INCENSE & AIR FRESHENERS

PLUS MUCH MORE DUE IN SOON CLOTHING - WEDDING & CRAFTS - FLOWERS - TOOLS & RELATED ITEMS & ON & ON - SO MUCH ARRIVING

WATCH FOR IT!

Jerome Tank
Season-2-Season, Inc.
1115 E. MAIN STREET PHILADELPHIA 1 MILE FROM DOWNTOWN
601-656-7104



We can't wait to serve you!
PHILADELPHIA DRY CLEANING, LLC
Bessie & Justin Wilcher
223 W. Beacon St. • Philadelphia
601-656-2262

1 new COVID-related death reported as numbers decline

By JOHN LEE
john@neshobademocrat.com

Neshoba County recorded its first COVID-19 death since May 19 last week as overall COVID-19 cases have decreased in the county with eight new cases reported over the past week, according to the Mississippi State Department of Health's Tuesday COVID-19 report.

Neshoba County's total COVID-19 cases since the pandemic began in March 2020 is now 4,059, which is eight more than last week's 4,051, with one new death reported, putting the death toll at 179. Of those deaths, 114 are from the Mississippi Band of Choctaw Indians, according to MSDH.

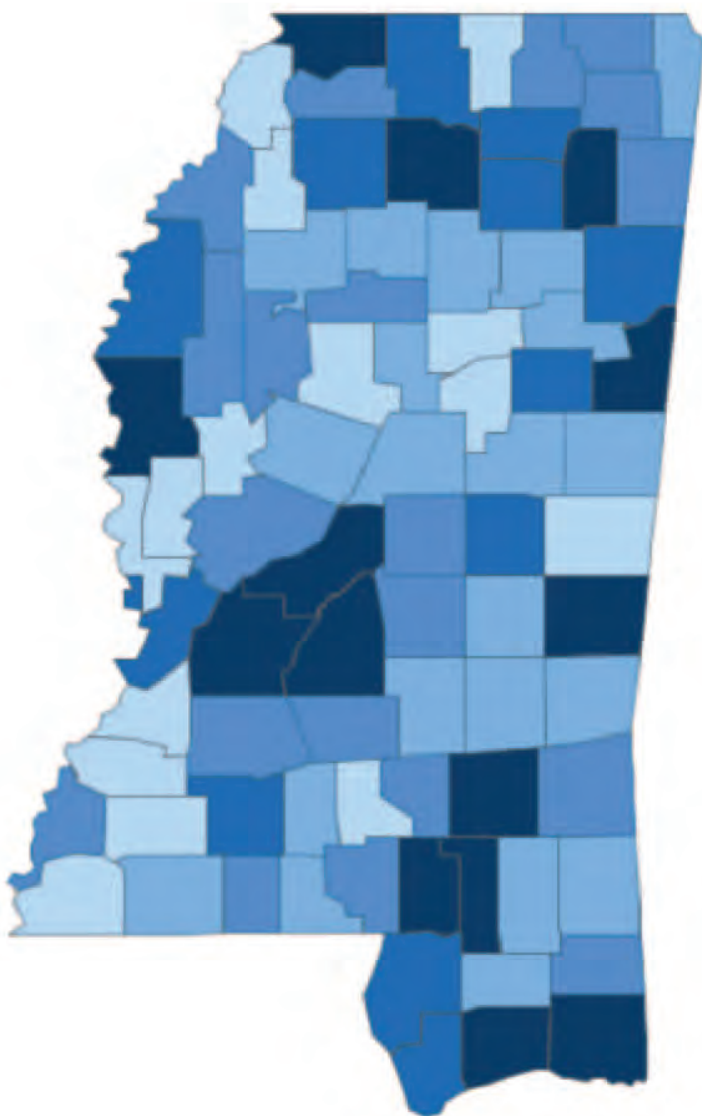
As of Monday, 19% of Neshoba County's population is fully vaccinated, according to MSDH, and 21% of the county's population has received one of the 11,613 total doses of COVID-19 vaccines administered in the county.

Vaccinations are being administered Tuesdays and Thursdays at the Neshoba County Coliseum, 12000 Highway 15 North, and are available to all Mississippians 16 and older. Go to https://msdh.ms.gov/msdhsite/_static/14,0,420,976.html to make an appointment.

The Mississippi Band of Choctaw Indians had reported no new positive cases of COVID-19 and no new deaths as of June 7, with the total number of positive cases for the Tribe remaining at 1,838 with 114 deaths. No new hospitalizations have been reported.

Statewide, since the pandemic began in March 2020, 195,052 confirmed COVID-19 cases have been recorded by the MSDH along with 123,526 probable cases, totaling 318,578 cases. There have been 5,062 confirmed COVID-19 deaths, along with 2,281 probable COVID-19 deaths, totaling 7,343 deaths since the start of the pandemic.

Mississippi COVID-19 Cases and Deaths by Race with Ethnicity as of 3 pm CT, June 7, 2021



1 to 1250 1251 to 2500 2501 to 3750 3751 to 5000 > 5000

Mississippi

Total Cases
318,578

	American Indian or Alaska Native	Asian	Black	White	Other	Unknown
Non Hispanic	1,246	1,221	86,719	124,131	3,197	2,647
Hispanic	64	40	456	2,061	3,760	759
Unknown Ethnicity	1,018	348	17,896	27,450	7,477	38,088

Total Deaths
7,343

	American Indian or Alaska Native	Asian	Black	White	Other	Unknown
Non Hispanic	92	13	2,527	3,381	44	19
Hispanic	1	1	9	33	23	2
Unknown Ethnicity	25	7	366	569	69	162

Mississippi's COVID-19 new cases and deaths continue to decline across the state. To date, 7,343 deaths have been attributed to the virus.

NOTICE OF PROPOSED AD VALOREM TAX EFFORT NESHOPA COUNTY SCHOOL DISTRICT

The Neshoba County School District will hold a public hearing on its proposed school district budget for fiscal year 2022 on June 25, 2021 at 11:00 AM in the Neshoba County Office of the Superintendent at 580 East Main Street. At this meeting, a proposed ad valorem tax effort will be considered.

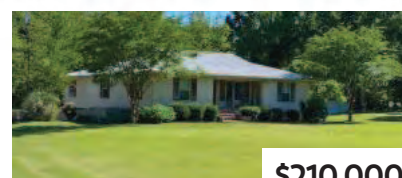
The Neshoba County School District is now operating with projected total budget revenue of \$41,013,280. Of that amount, 12.82 percent or \$5,259,371 of such revenue is obtained through ad valorem taxes. For next fiscal year, the proposed budget has total projected revenue of \$56,336,504. Of that amount, 10.12 percent or \$5,701,448 is proposed to be financed through a total ad valorem tax levy.

For the next fiscal year, the proposed increase in ad valorem tax effort by the Neshoba County School District may result in an increase in the ad valorem tax millage rate. Ad valorem taxes are paid on homes, automobile tags, business fixtures and equipment, and rental real property.

Any citizen of the Neshoba County School District is invited to attend this public hearing on the proposed ad valorem tax effort, and will be allowed to speak for a reasonable amount of time and offer tangible evidence before any vote is taken.

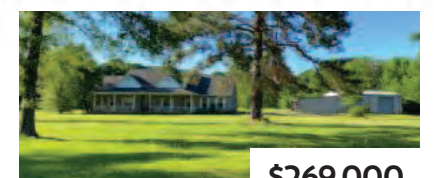
HILL REAL ESTATE GROUP, LLC

RESIDENTIAL • COMMERCIAL • LOTS & ACREAGE • PROPERTY MANAGEMENT



10400 Country Ln.
Philadelphia | MLS# 21-346

\$210,000



10411 Road 852
Philadelphia | MLS# 21-347

\$269,000



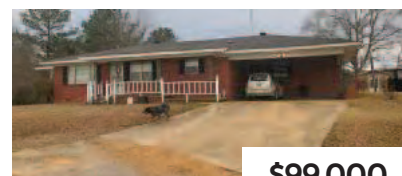
105 Seales Cove
Philadelphia | MLS# 21-349

\$139,000



425 Pecan Ave.
Philadelphia | MLS# 20-1009

\$199,000



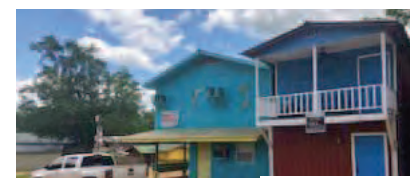
10681 Rd. 244
Union | MLS# 21-170

\$99,000



Hwy 19 North
Philadelphia | MLS# 21-315

\$25,000



16800 Hwy. 21 South #125
Philadelphia | MLS# 19-625

\$249,000



Jason Martin
Realtor®
601.575.5744
jasonm@gohillphilly.com



Deric Horne
Realtor®
601.416.7968
deric@gohillphilly.com



Pamela Belk Lovern
Realtor®
601.720.3405
pamela@gohillphilly.com



Jason Lovern
Realtor®
601.416.1015
jason@gohillphilly.com



Dale Germany
Realtor®
601.934.6146
dale@gohillphilly.com



Matthew Smith
Realtor®
601.692.5484
matthew@gohillphilly.com



View All Area MLS Listings

gohillphilly.com

325 Byrd Avenue, Philadelphia | 601-389-0003 | gohillphilly.com

SHOP LOCAL!



Clark receives Award for Excellence in Choral Music

Lisa Clark, choral director at Madison Central High, was recently presented the Ernestine Ferrell Award for Excellence in Choral Music by the Mississippi Chapter of American Choral Directors Association. Clark is originally from Neshoba County. Clark is a native of Louisville and is the daughter of William and Patsy Clark. She is the granddaughter of the late James and Zexa Dunigan of Philadelphia. Also pictured is Sean Brewer, principal at Madison Central High School, Madison.



Home Equity Line of Credit
Introductory Rate of
0% APR for 3 Billing Cycles
and then Variable Rate
3.75% APR* Thereafter

Turn your home's equity into a backyard oasis. Apply today!

601.693.1331 | YourCNB.com



Citizens National Bank
The Power of Local™
Member FDIC

*Introductory rate of 0% Annual Percentage Rate (APR) is fixed for the first three (3) billing cycles. The number of days in your billing cycle may vary based on your account opening date. After the first three (3) billing cycles, the APR will vary based on the U.S. Prime Rate as published in the Wall Street Journal +/- a margin. The margin is based on your credit score and a maximum LTV of 80%. As of February 15, 2021, Prime Rate was 3.25% APR. The minimum line of credit to receive the introductory rate of 0% is \$10,000 with a draw of \$5,000 or more at closing. Your APR will never be higher than 21%. HELOC must be new money to CNB, or CNB HELOC must be within one year of maturity. Other HELOC options are available. Collateral cannot be classified as a manufactured or mobile home. If your loan payment is automatically debited from your CNB personal checking account, CNB will pay all bank required closing cost for approved credit lines of \$250,000 or less and up to \$500 in closing costs for approved credit lines exceeding \$250,000. Certain fees may apply from \$1 to \$1,500 when payment is not auto debited from a CNB personal checking account. Land survey, if required is not included in bank paid costs. \$500 closing cost recovery fee will be assessed. If line is closed within 36 months of contract date. This loan consists of a 10-year draw period with interest only payments and a 15-year repayment period. Repayment period consists of variable rate monthly minimum payments including principal and interest. Repayment APR is based on U.S. Prime Rate as published in the Wall Street Journal +/- a margin but will not exceed 21% and will not fall below your base rate. Homeowners insurance is required. Your base rate is Prime +/- a margin determined by your loan to value and credit score. Rates and APRs are subject to change without notice. Consult your tax advisor regarding deductibility of interest. Subject to credit approval.

FARMER OWNED

Prairie Farms

presents

MISSISSIPPI SONGWRITER OF THE YEAR

Saturday, June 19th 7:00



Mississippi Arts and Entertainment Experience
Downtown Meridian

For Tickets and More Information

Visit us at mssongwriteroftheyear.com

GEYSER FALLS WATER THEME PARK

Choctaw, Mississippi

NOW OPEN DAILY

<p>SEASON PASSES</p> <p>\$99.99</p>	<p>GENERAL ADMISSION</p> <p>\$29.99 \$39.99</p> <p>Sun - Fri Saturday</p>
---	--

Save \$2 OFF General Admission by purchasing online.

Great Discounts Available For: Military, Firemen, Police, First Responders, Nurses, & Educators
**Up to 4 per ID; Multiple discounts cannot be combined.*

Open Daily
June 5-August 1
Mon-Sat: 11am-6pm
Sunday: Noon-6pm

Open Fridays & Saturdays
in July until 7pm.

Open Weekends Only
August 7-September 5
Saturday: 11am-5pm
Sunday: Noon-5pm

Holidays
Memorial Day
Labor Day
11am - 5pm

SCAN ME



SKIP THE LINE. BUY ONLINE!

ANNOUNCING

Free wireless. No contract.

The fast lane is wide open. See if you qualify for free wireless on select plans through the Emergency Broadband Benefit Program.

Check your eligibility
cspire.com/ebb

Terms and conditions may apply.



Adkins loves cooking with grandchildren

By SARAH KATHRYN WATKINS
news@neshobademocrat.com

Belynda Adkins comes from a generation of women who love to cook.

Adkins works for the Philadelphia Public Schools doing payroll and working with insurance. Her husband, Larry Adkins, retired in 2019 from Lowe's, where he was the assistant store manager. This December, the couple will celebrate 40 years marriage.

Adkins and her husband met at the bowling alley in Philadelphia through Larry's brother, Benny Peebles. After marrying in 1981, they had two children, Gordon Adkins and Katie Monday. Gordon Adkins works as a deputy sheriff for Neshoba County. Katie Monday works as a gifted teacher in Philadelphia.

Adkins has nine grandchildren ranging from 21 months to 18 years old. Six of them are grandsons and three are granddaughters. Adkins' granddaughters love helping her cook.

"We started out cooking cupcakes," Adkins said. "Now we are cooking fried apple pies and dumplings."

Every Sunday, Adkins and her family get together after church for a big lunch. After lunch is over, the family goes outside for a game of baseball or basketball.

Adkins and her husband attend Good Hope Baptist Church. At church, she is the assistant choir director, pianist and organist.

Adkins started playing the piano when she was in middle school, and her love for music runs deep.

Adkins is also co-president of a group called Women on a Mission at her church. The group is currently working on putting together care packages.

Adkins gets her love of cooking from her late mother, Sarah Peebles. Peebles used to cook and sell food to people at the Neshoba County Fair. Peebles' specialty was her homemade biscuits, fried chicken and her dumplings.

Her dumplings are now a special meal in the Adkins family, and her granddaughters are learning how to make them.

Adkins and her husband always keep a garden. Most of the time, with the fresh tomatoes and green beans, Adkins will can them. This year, however, their garden is smaller.

Three years ago, the Adkins' house caught on fire. Adkins lost all her recipes, but the church and community were eager to help Adkins by giving her different cookbooks and recipes.

"We have been truly



Belynda Adkins

blessed," Adkins said.

WATERMELON SALAD
• 6 oz. strawberry Jell-O
• 2 cups hot water
• 1 small can crushed pineapple, undrained
• 3 cups watermelon (or enough to cover bottom of dish)

Topping
• 8 oz. cream cheese, softened
• ¼ cup milk
• ¼ cup plus 2 tablespoons granulated sugar
Dissolve jello in hot water. Add pineapple and watermelon. Refrigerate until it is firm.

Topping: Combine cream cheese, cool whip, milk, and sugar. Spread over congealed layer.

BROTHER BOB'S CHOW CHOW

• 4 to 10 Jalapeno peppers deveined and seedless (I use 4 large or 6 small) chopped
• 2 red, 2 yellow, 1 orange, 1 green bell peppers chopped
• 2 green tomatoes chopped
• 1 large sweet onion chopped
• ½ head of cabbage chopped
• ¼ cup of salt
In a large bowl combine all

COOK OF THE WEEK

of the above and stir to combine flavor. Cover and put in frig for 8 to 12 hours. (I like 12) Drain well after taking out.

• Take 2 cups of white vinegar
• 1 ¼ cup of sugar
• ¼ cut of pickling spice wrapped in cheesecloth and tie
Now pour mixture into a

large dutch oven or boiler. Then add the above. Place pickling spice in center of pot and cover with mix. Bring to a boil over medium heat, then reduce heat and simmer for 1 hour or until veggies are tender to your liking. Let cool and put in jars and do a hot bath to seal. Makes 5 pints.

PECAN TRIFLE CAKE

Cake:
• 2 cups sugar
• 2 sticks melted butter
• 1 ½ cups self-rising flour
• 4 eggs

• 1 tsp. vanilla flavoring
• 2 cups chopped pecans
Mix all together. Cook in a baking dish on 350 until done. Set aside to cool.

Filling:
• 1 large cool whip
• 2 sweetened condensed milk
• 2 cream cheese, softened
• 3 dashes lemon juice
Mix filling together until smooth. When cake is cool break apart and start layering trifle. Repeat and sprinkle top with pecans.

Just Among Friends

By MARIANNE ENOCHS
friends@neshobademocrat.com

Welcome to the world, Eleanor Kathryn Johnson! She arrived on May 28 weighing 6 pounds and 15 ounces of pure sweetness. Her parents are Brent and Mollie Claire McKay Johnson who were joyfully waiting to meet her.

Eleanor Kathryn is named for her two great-grandmothers. Her first name is shared with her maternal great-grandmother and her middle name with her paternal great-grandmother. Her Philadelphia grandparents are Don and Sharon Tingle McKay. Congratulations!

The gorgeous floral arrangement in the First Baptist Church on Sunday, May 30 was in honor of Barney and Lavinia Nowell's 70th Wedding Anniversary. The couple has been a vital part of the Philadelphia community for many wonderful years. Congratulations on reaching this iconic milestone.

The 14th Annual Dansby-Williams Memorial Day Fishing Tournament was a great success! The Steve Dansby and Sid Williams families and friends celebrated Memorial Day with a huge fish fry complete with all of the side dishes. The fish were freshly caught in the lake hours before being cooked.

There were teams of two people competing to see who could catch the most fish during the time allotted. The fishermen worked happily to pull

in as many fish as possible for their dinner. Partners, Bo Eakes and Jack Butler, caught the most fish. The other partners were TJ and Hutt Rushing, Steve Dansby and Barrett Little, Chris Butler, and Sid Williams, James Savage and Payton Little. Catching the most fish in the young age group were Jack Butler and Hutt Rushing.

While the fishermen fished, the wives and children congregated at Barrett and Kelly Little's home for finger foods and pool time. When the fishermen returned with their catch of the day, everyone enjoyed a fabulous fish fry! Great tradition!

At the beginning of the National Youth Cutting Horse Association show season, Annie Kate White set a goal to make it into the top 15 of the world finals so she could compete in the NYCHA Finals in Ft. Worth, Texas. She recently achieved her goal!

It was no easy task for Annie Kate to make her dream come true. She worked hard, kept up her grades, overcame frustrations, made a lot of sacrifices, and celebrated big! She rode an amazing horse, Cat Man Blue" Bear," as he is affectionately known. Annie Kate persevered and is now excitedly looking forward to the National Youth Cutting Horse Association World Finals on July 26-31 in Fort Worth Texas. Her very proud parents are William and Leigh Ann Hatcher White who have been so supportive of her participation in this sport. Philadelphia grandparents are

Roy and Barbara White. Congratulations and best of luck in Fort Worth!

An iconic birthday was celebrated on May 30 at the Madison County Nursing Home where Mrs. Allie Mae Creel observed her 103rd birthday! She was surrounded by members of her family who were delighted to be together on this special occasion. Due to the pandemic, the family had not visited as a group for over a year.

She is affectionately known as "Mamaw" to her grandchildren and great-grandchildren and others who are well acquainted with her. One of her favorite grandchildren, (according to him), is Tony Alexander who attended with his wife, Gwen Breazeale Alexander. Mrs. Creel's daughter is Rita Alexander Lott, formerly of Philadelphia, but now a resident of Brandon, who helped plan the event for her mother.

The gift of time is the most precious gift that can be given to someone that is loved. Time to remember and renew, as well as create more memories to cherish as time rushes by, is a priceless present. Happy, Happy Birthday.

Call in your news to *Just Among Friends*, 601-656-4000, or mail it to the Democrat, P.O. Box 30, Philadelphia, 39350; friends@neshobademocrat.com

FAIR 2021 T-SHIRTS & POSTERS ARE HERE!

Adult, Youth, Toddler & Infant sizes available for only \$24!



kademi

OUR NEW WEBSITE LAUNCHES THIS WEEK!

Go purchase your Fair t-shirts and posters at kademi.com today!

kademi

401 Center Ave N
Philadelphia, MS 39350
(601) 656-5400

We're OPEN Mon. - Fri. 9 - 5:30
and Sat 10 - 3 @kademi



Seniors awarded scholarships from alumni

The Neshoba Central High School Class of 1972 awarded four scholarships in the amount of \$500 to the Class of 2021.

Ethan Sage Bounds

Ethan is the son of Chris and Amanda Bounds and Eddie and Tammy Boyd. He has participated in Engineering II, Robotics Competition, and Technology Student Association. Ethan plans to attend Mississippi State University, Starkville, Mississippi, and major in Mechanical Engineering.

Piper Fulton

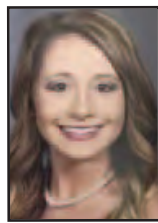
Piper is the daughter of Jason and Angela Fulton, and she plans to major in nursing at East Central Community College, Decatur, Mississippi. Piper will be a cheerleader at ECCC. Some of her awards and honors at Neshoba Central include Special Honor Roll, class favorite, Homecoming Court, Most Beautiful, NCA and VCA All-American Cheerleader.



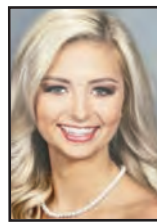
Ethan Bounds



Piper Fulton



Natalie Verry



Molly Kurtz

Natalie Verry

Natalie is the daughter of Todd and Ashley Verry. She will be attending East Central Community College this fall where she will be a cheerleader. Natalie plans to continue her education at Mississippi State University and major in veterinary medicine. She received numerous awards at Neshoba Central High School including FFA treasure, junior maid, senior favorite, power lifting 1st and 2nd place, and selected to a travel to Europe based on good grades, behavior, and character.

Molly Kurtz

Molly is the daughter of B.J. and Shannon Morrow and Jason Kurtz. She will be attending Mississippi State University in the fall to pursue a degree in Radiological Sciences. Molly plans to further her education in Diagnostic Medical Sonography at Baptist Health Services in Memphis, Tennessee. At Neshoba Central High School she participated in the National Honor Society, Dance Team, Cheerleading, Beta Club, Bible Club, and was on Honor Roll.

Of Local Interest

NESHOPA COUNTY FAIR EXHIBIT HALL SIGN UP

Come by the MSU Extension Service-Neshoba County office and pick up your entry forms, entry tags and exhibitor number for the Neshoba County Fair Exhibit Hall. Youth ages 8-18 can enter items in the categories of fresh fruits and vegetables, field crops, food preservation, food-nutrition, posters, and arts and crafts. Adult categories include fresh fruits and vegetables, field crops, food preservation, and cultural arts. The deadline to pick up your entry forms, tags and exhibitor number is Friday, July 16. Call 601-656-4011 or come by the Extension Service office in the Neshoba County Coliseum for more information.

CEMETERY FUND

Please mail all donations for Old Pearl Valley Baptist Church Cemetery Fund to Mrs. Joan Gamblin at 12220 Marty Stuart Drive Philadelphia, MS 39350.

DESIGNATED DISASTER AREAS

Administrator Zach Ducheneaux designated two (2) counties in the State of Mississippi as the primary natural disaster area. Producers in Kemper and Noxubee counties who suffered physical damage and losses caused by a winter storm, excessive snow, excessive ice, freeze, high winds, hail, and excessive rain that occurred February 15, 2021 through February 19, 2021, may be eligible for U.S. Department of Agriculture (USDA) Farm Service Agency (FSA) emergency loans.

This natural disaster designation allows FSA to extend much-needed emergency credit to producers recovering from natural disasters. Emergency loans can be used to meet various recovery needs including the replacement of essential items such as equipment or livestock, reorganization of a farming operation or the refinancing of certain debts.

Producers in the contiguous Mississippi counties of Lauderdale, Lowndes, Neshoba, Newton, Oktibbeha, and Winston are also eligible to apply for emergency loans.

The deadline to apply for these emergency loans is January 25, 2022.

FSA will review the loans based on the extent of losses, security available and repayment ability.

NESHOPA CENTRAL PRE-K

The Pre-Kindergarten Program is located at the Neshoba County School District, Office of Federal Programs/Pre-K building at

1125 Golf Course Road. Students are screened for enrollment by a pre-kindergarten test. The program is designed to serve those children with the most academic/developmental needs, and will be 4 years old on or before September 1, 2021. The classes will begin and end to coincide with the regular school term at Neshoba County Schools. Participating students' parents will be required to provide transportation to and from the center. As other students in the school district, pre-k students will be offered breakfasts and lunches by the Neshoba County School District Food Services.

Registration and testing will be conducted from 8:30 a.m.-2 p.m., on May 19 - 21. We ask that one parent attend with the child being tested.

To register a child for the pre-k program, guardians must provide the following documents:

Two (2) of the following proofs of residency:

- IF RENTING/LEASING: Current notarized official home/apartment lease/rental agreement with length of lease and Parent's or Guardian's name included on lease/rental agreement (THIS MUST BE ONE OF THE PROOFS IF LEASING OR RENTING and one of the following #3-#6)
- Filed Homestead Exemption application form OR current mortgage document or property deed
- Valid driver's license OR voter identification card
- Current utility bill (dated within 60 days) showing the service location with parent's or guardian's name listed (acceptable bills: electricity, gas, water, or landline telephone)

- Automobile registration receipt
- Any other document that will objectively and unequivocally establish that the parent or guardian resides within the school district, and in the case of a student living with a legal guardian who is a bona fide resident of the school district. (Official government documentation - i.e. current tax year return, social security statement, DHS statement, etc.)

- Property Tax Card, Property Deed, or other document that states the residency property's Section, Township, and Range.
- C. The child's certified birth certificate from Mississippi State Department of Health Vital Records (601-206-8200) (child must be 4 years of age on or before September 1, 2021),
- D. The child's social security card,
- E. The child's MS certificate of immunization compliance form (Form no. 121) checked and signed,
- F. CDIB (if applicable).

HIGH SCHOOL REUNION

Philadelphia High School Class of 1980 is holding their 40-year reunion Saturday, June 12 at Bridges the Venue. \$50 per individuals or \$100 for couples. Contact Gilbert Vowell 601-416-1181.

THOMAS FAMILY REUNION

The descendants of William Washington and Lena Catherina Phillips Thomas, whose children are James Allen Thomas, William Melton Thomas, Albert Miles Thomas, John Marion Thomas, Mary Susan Thomas Brantley, and Dock Kelly Thomas will hold the Annual Thomas Family Reunion at the home place of William & Alpha Thomas at Madden, Mississippi on Saturday, June 12, 2021 at 11:30 AM. We hope each of you will plan to come and bring a dish and your lawn chair. If you have any old pictures or other family information that you can share, this will be a great contribution in preparation of a Thomas Family Book. We look forward to enjoying a day of food, fun and fellowship with each of you. We look forward to seeing each of you since we were not able to gather last year.

MT. ZION MEMORIAL SERVICE

The Historic Mt. Zion United Methodist Church will host the annual memorial service for Chaney, Goodman & Schwerner on Sunday, June 20, 2021 at 3:00 p.m.

Our featured speaker for this occasion is the Reverend James Lawson, Jr., a retired United Methodist pastor, Civil Rights Leader and founder of the James Lawson Institute.

On Saturday, June 19, 2021 from 10:00 a.m. to 6:00 p.m., The James Lawson Institute, Miami University, and Southern University Law Center will host a series of workshops at Mt. Zion. A keynote message from Rev. Lawson on: "Where Do We Go from Here: Chaos or Community?"

Workshop speakers include: Dr. Mary King, Dr. Daniel Wayne Lee, Dr. Sekou Franklin, Daryn Cambridge, Dr. Ada Goodley, Dr. Anthony James, Dr. Keith Parker, Deborah Mathis, and Gloria Williamson. The overall theme is: "Nonviolently Transforming Our Times, Our Work, and Our Environment."

We look forward to your presence and participation. Social distancing guidelines and masks will be enforced to ensure the safety and well-being of everyone.

NESHOPA COUNTY FAIR LIVESTOCK SIGN UP

Come by the MSU Extension Service-Neshoba County office and pick up your entry form and rules and regulations book for the Neshoba County Fair Livestock Shows. Youth ages 8-18 can enter in events of Beef Show, Dairy Show, and Sheep and Goat Show. The deadline to enter is Friday, July 16. Call 601-656-4011 or come by the Extension Service office in the Neshoba County Coliseum for more information. You must enroll in 4H to enter.

VACATION BIBLE SCHOOL

Join us at First Church of God on 435 Columbus Avenue for Vacation Bible School, the Knights of North Castle. It is on June 21-25 from 6 p.m.- 8:30 p.m. Everyone is welcome to join. 662-803-1015

BIBLE STUDY

Gatherings on Tuesday nights, 7 p.m. at the Philadelphia Thrifty Nickel. Stay inspired by the Word of the Lord. Come join us as we dive into "Learning the Bible" with Speaker Bro. Ricky Rogers. Be renewed by the Bible.



BOYS & GIRLS CLUB OF NESHOPA COUNTY

You are invited to become a "2020 Dream Builder" for our youth by supporting the future of our boys & girls through club programs such as:

- Power Hour (Tutoring) Mentoring Program
- Healthy Habits/Choosing the Best Passport to Manhood/Smart Girls
- Money Matters/Field Trips/Activities
- After-School Program (City & County Schools): 150+ children attend each day
- All-Day Summer Enrichment Program 200+ children attend each day

Your donation is so appreciated and should be made payable to:

"Boys & Girls Club of Neshoba County"
P.O. Box 313
Philadelphia, MS 39350

For more info on how you can invest in our children, call 601-656-4343.

For program info/enroll a child, call Jermaine Harris, County Unit Director, 601-880-6322.



If at first you succeed, it probably wasn't very difficult.

One bad thing about being self-employed is you can't tell friends about your awful boss.

Twins: infant replay.

The world's largest room is the one for improvement.

How can anyone save money when we earn it for five days and spend it for seven?

Boys FURNITURE
ESTABLISHED IN 1957 PHILADELPHIA, MISSISSIPPI
319 Byrd Ave, Philadelphia, MS 39350
601-656-1802



ADVERTISE IN

The Fair Times

Seven consecutive days,
150,000 readers

For advertising information call

Joy Stewart, 601-500-0746 / joy@neshobademocrat.com

Henley Wilson, 769-233-6985 / henley@neshobademocrat.com



Former Tornado graduated with honors from Westside High in Jacksonville, Florida, June 7, 2021. Quamane Graham is the son of Shante Graham, Jacksonville, Fla., and Orié Hudson, Hattiesburg. His parents are also alumni of Philadelphia High School. His maternal grandparents are Jay and Georgia Graham. His paternal grandparents are Mike and Vivian Jones. His great-grandparents are the late George and Ruby Fulton and the late Vernon and Flossie Graham.

Quamane is Class President and a Special Honor Roll student in a class of 397 students. He has been offered full tuition at Tennessee State University in Nashville. His major will be Biology, Pre-Med.

On behalf of the family and your siblings Kedeonn, K.J., McCarty, Marley, Hudson and Trillion McCoy Jr., we salute you Quamane Graham, Class of 2021. Keep believing. Keep soaring until you achieve your highest goal in life.

No matter where Quamane goes, he will always remember the Philly Tornadoes!

LEGALS

CHOCTAW TRIBAL CIVIL COURT MISSISSIPPI BAND OF CHOCTAW INDIANS IN THE INTEREST OF LEVI MYLES ROBINSON, A MINOR

LEVI MYLES ROBINSON, A MINOR, BY AND THROUGH HIS MOTHER AND NEXT FRIEND, KRYS-TAL ROBINSON VS. MISSISSIPPI STATE BOARD OF HEALTH, VITAL RECORDS DEFENDANT

SUMMONS BY PUBLICATION

TO: SARAH SHALESE DAVIDSON-GIBBONS, AS MOTHER AND NEXT FRIEND OF MINORS A.H. JR., L.H., and R.H. You have been made a Respondent in a Petition to Establish Paternity and Amend Birth Certificate filed in this court by Petitioner. You are summoned to appear and defend against the petition filed against you in this action at 1:00 o'clock P.M. on the 6th day of July, 2021, in the courtroom of the Choctaw Tribal Civil Court located at the Smith-John Justice Center in Choctaw, Mississippi, and in case of your failure to appear and defend a judgment will be entered against you for things demanded in the petition. You are not required to file an answer or other pleading but you may do so if you desire. Issued under my hand and the seal of this Court, this the 4th day of June, 2021.

/s/ Jennileen Young
Choctaw Tribal Court Clerk (SEAL)

IN THE CHANCERY COURT OF NESHOPA COUNTY, MISSISSIPPI ETHEL POLK WRIGHT VS. FILE NO. 21-87

JIMMY WRIGHT DEFENDANT

ALIAS SUMMONS (By Publication) THE STATE OF MISSISSIPPI COUNTY OF NESHOPA

TO: JIMMY WRIGHT, a non-resident of the State of Mississippi, who is not to be found in this state on diligent inquiry made by the Plaintiff, and his whereabouts, place of abode, and post office address are unknown to Plaintiff after having made diligent inquiry to ascertain the same, but his last known address was in Philadelphia, Mississippi.

You have been made DEFENDANT in the suit filed in this Court by ETHEL POLK WRIGHT, PLAINTIFF, seeking a Divorce Decree. Defendants other than you in this action are None.

You are required to mail or hand deliver a copy of a written response to the Complaint filed against you in this action to JIM ARNOLD, Attorney for the Plaintiff, whose post office address and street address is 435 E. Beacon Street, Philadelphia, MS 39350.

YOUR RESPONSE MUST BE MAILED OR DELIVERED NOT LATER THAN THIRTY DAYS AFTER THE DATE OF FIRST PUBLICATION OF THIS SUMMONS. IF YOUR RESPONSE IS NOT MAILED OR HAND DELIVERED, A JUDGMENT BY DEFAULT WILL BE ENTERED AGAINST YOU FOR THE MONEY OR OTHER RELIEF DEMANDED IN THE AMENDED COMPLAINT.

You must also file the original of your response with the Clerk of this Court within a reasonable time afterward.

ISSUED UNDER MY HAND AND SEAL OF SAID COURT, this the 28th day of May, 2021.

Mr. Guy Nowell
Chancery Clerk of Neshoba County (SEAL) 401
East Beacon Street, STE 107
Philadelphia, MS 39350

By: /s/ G. Tate
DEPUTY CLERK

Publish Date June 2, 2021 . June 9th, 2021 and June 16, 2021

IN THE CHOCTAW TRIBAL COURT MISSISSIPPI BAND OF CHOCTAW INDIANS IN THE MATTER OF THE ADMINISTRATION OF THE ESTATE OF SARINA WILLIAMS ANDERSON, DECEASED TARINA ANDERSON

CAUSE NO.: 2020-386

NOTICE TO CREDITORS
Letters of Testamentary having been granted on the 5th day of May, 2021, by the Court Clerk of the Choctaw Tribal Court of the Mississippi Band of Choctaw Indians, to the undersigned upon Sarina Williams Anderson, deceased, notice is hereby given to all persons having claims against said Estate to present the same to the Clerk of this Court for probate and registration according to law within ninety (90) days from this date or they will be forever barred.

/s/Tarina Anderson

TARINA ANDERSON ADMINISTRATRIX
Prepared By:
STEVEN D. SETTLEMIRE
ATTORNEY FOR ADMINISTRATRIX
SettleMires & Graham, PLLC
410 East Beacon Street
Philadelphia, MS 39350
(601) 656-9597
MSBN: 99674

IN THE CHANCERY COURT OF NESHOPA COUNTY, MISSISSIPPI IN THE MATTER OF THE PETITION FOR ADOPTION OF THE MINOR CHILD NAMED HEREIN, D.P.J.

NELDA JOHNSON, NEXT FRIEND PETITIONER VS. BRUCE MOORE, NATURAL FATHER; MISSISSIPPI STATE DEPARTMENT OF HEALTH RESPONDENTS

SUMMONS (Rule81)
(By Publication)

THE STATE OF MISSISSIPPI COUNTY OF NESHOPA

TO: **BRUCE MOORE**, a non-resident of the State of Mississippi, who is not to be found in this state on diligent inquiry made by the Plaintiff, and her whereabouts, place of abode, and post office address are unknown to Plaintiff after having made diligent inquiry to ascertain the same, but her last known address was in the State of Mississippi.

You have been made DEFENDANT in the suit filed in this Court, Nelda Johnson, Plaintiff, seeking an Adoption of a minor child born to Wendy Johnson on January 31, 2006. Defendants other than you in this action are: None.

You are summoned to appear and defend against said Petition at 9:00 O' Clock a.m. on the 7th day of July, 2021, in the Courtroom of the Choctaw County Courthouse in Ackerman, Mississippi. If your response is not mailed or delivered, the Petition for Adoption may be granted by the Court.

ISSUED UNDER MY HAND AND SEAL OF SAID COURT, this 27th, day of May, 2021.

(SEAL)
Mr. Guy Nowell
Chancery Clerk of Neshoba County
401 East Beacon Street, Ste 107
Philadelphia, MS 39350

By: /s/ G. Tate
DEPUTY CLERK

CHOCTAW TRIBAL CIVIL COURT MISSISSIPPI BAND OF CHOCTAW INDIANS

IN THE MATTER OF THE ESTATE OF THURMAN BEE THOMPSON, DECEASED C. A. NO.: 2021-144

NOTICE TO ALL UNKNOWN HEIRS

Letters of Administration having been granted on the 26 th day of May, 2021, by the Choctaw Tribal Civil Court to the undersigned ELISHIA LASHAY THOMPSON upon the Estate of THURMAN BEE THOMPSON, deceased, notice is hereby given to all UNKNOWN HEIRS having claims against said estate to probate and register the same, as provided by law, with the clerk of the court, within ninety (90) days from the first publication of this Notice. Failure to probate and register any such claim within said ninety (90) day period will forever bar the claim.

WITNESS THE SIGNATURE of the Administrator, this the 26 th day of May, 2021.

/s/ ELISHIA LASHAY THOMPSON
ADMINISTRATRIX

SUBMITTED BY:
TIMOTHY L. TAYLOR, MSB# 103036
Post Office Box 6255; Choctaw, MS 39350
Phone: (601) 650-7449; Fax: (601) 650-7421
Attorney for Administratrix

IN THE CHANCERY COURT OF NESHOPA COUNTY, MISSISSIPPI IN THE MATTER OF THE ESTATE OF KENNETH EARL TOWNSEND, DECEASED FILE NO. 19-428

RULE 81 SUMMONS BY PUBLICATION (ALIAS)

THE STATE OF MISSISSIPPI COUNTY OF NESHOPA

TO: All Unknown Heirs of Kenneth Earl Townsend, Deceased

You have been made a respondent in the Petition to Determine Heirs filed with the Court by Bonnie Townsend seeking a judicial determination of the rightful heirs at law of Kenneth Earl Townsend. All other known heirs are Petitioner, Bonnie Townsend and Isaiah Townsend. You are summoned to appear and defend against said Petition filed against you in this action at 1:00 o'clock P.M. on the 6 th day of July, 2021, at the Carroll County Chancery Courthouse, Vaiden, Mississippi, and in case of your failure to appear and defend a judgment will be entered against you for the things demanded in the Petition.

You are not required to file an answer or other pleading but you may do so if you desire.

ISSUED UNDER MY HAND AND SEAL OF THIS COURT, this the 28th day of May, 2021.

GUY NOWELL
NESHOPA COUNTY CHANCERY CLERK

By: /s/W. Savell D.C.

Jim Arnold
435 East Beacon Street
Philadelphia, MS
Telephone :
Facsimile:
E-Mail:

NOTICE OF BUDGET HEARING

The Board of Trustees of the Philadelphia Public School District will hold a public hearing on the school district's 2021-2022 budget which includes the Special Education and Federal Programs budget on June 17, 2021 at 12:00 P.M. in the Support Services Building, Philadelphia, Mississippi. The Children's Internet Protection Act (CIPA) for the district will also be discussed. The purpose of this hearing is to give the citizens of this school district an opportunity to comment on the expenditure and taxing plans of the district. The hearing is being conducted in compliance with the law as enacted by the 1986 and 1987 Legislative Sessions.

BOARD OF TRUSTEES OF THE PHILADELPHIA PUBLIC SCHOOL

DISTRICTBY: Dr. Lisa Hull, Superintendent

IN THE CHANCERY COURT OF NESHOPA COUNTY, MISSISSIPPI IN THE MATTER OF THE ESTATE OF ALEX HENSON, Deceased BY: ADRIAN HENSON, Petitioner Cause No: 2020-238

RULE 81 SUMMONS (By Publication)

STATE OF MISSISSIPPI COUNTY OF NESHOPA:::

TO: **To the known or unknown heirs-at-law of Alex Henson, Deceased**

You have been made a party in the suit filed in this Court by Adrian Henson, Administrator of the Estate of Alex Henson, deceased and known heirs at law of Alex Henson, deceased seeking determination of the heirs at law of Alex Henson.

You are summoned to appear and defend against the Petition filed in this action at **9:00 a.m. on the 8th day of July, 2021**, before the Honorable Judge Joseph Kilgore, at the Attala County Chancery Courthouse, Kosciusko, Mississippi, and in case of your failure to appear and defend a judgment will be entered against you for the relief or other things demanded in the Petition.

You are not required to file an answer or other pleading but you may do so if you desire.

Issued under my hand and the seal of said Court this, the 24th day of May, 2021.

GUY NOWELL, CHANCERY CLERK CIVIL ACTION
WSavell, D.C.

Prepared and requested by:
RaToya Gilmer, Esq., MB # 104487
Gilmer & Green Legal Group, PLLC
Post Office Box 1668
Jackson, Mississippi 39215
Telephone: (769)208-8122
Facsimile: (769)235-6265

TITLE OF ABANDONMENT MOTOR VEHICLE
Debra Burton
1112 Keith Street
Philadelphia, MS 39350
601-562-6640

MAKE: 2000 Ford Expedition
VIN#: 1FMRU15L5YLB96866
PLACE OF SALE: Philadelphia
OWNED BY: David Leopold
ADDRESS: 1112 Keith Street, Philadelphia, MS 39350

SUBSTITUTE TRUSTEE'S NOTICE OF FORECLOSURE SALE

WHEREAS, on July 22, 2009, Carrie Clemons executed a certain deed of trust to David L. Thurston, Trustee for the use and benefit of Harvard Home Mortgage, Inc., which deed of trust is of record in the office of the Chancery Clerk of Neshoba, County, state of Mississippi, in Deed of Trust Book 2009, Page 6054; and WHEREAS, Nationstar Mortgage LLC d/b/a Champion Mortgage Company, the current holder and/or assignee, substituted Jauregui & Lindsey, LLC as Trustee by instrument recorded in the Chancery Clerk's Office on May 7, 2021 in Book 2021, Page 3916; and WHEREAS, Default having been made in the terms and conditions of said deed of trust and the entire debt secured thereby having been declared to be due and payable in accordance with the terms of said deed of trust, Nationstar Mortgage LLC d/b/a Champion Mortgage Company, the legal holder of said indebtedness, having requested the undersigned Substitute Trustee in said deed of trust, will on July 17, 2021 offer for sale at public outcry and sell within legal hours (being between the hours of 11:00 a.m. and 4:00 p.m.), at the main front door of the County Courthouse of Neshoba County in Philadelphia, Mississippi, to the highest and best bidder for cash the following described property situated in Neshoba County, Mississippi, to wit:

BEGINNING AT THE CENTER CORNER OF SECTION 30, TOWNSHIP 11 NORTH, RANGE 12 EAST, AND RUN EAST ALONG THE SOUTH SIDE OF THE QUARTER SECTION LINE 75 FEET TO A CORNER, THENCE RUN NORTH 105 FEET TO A CORNER, THENCE RUN WEST 75 FEET TO THE QUARTER SECTION LINE, THENCE RUN SOUTH ALONG THE QUARTER SECTION LINE 105 FEET TO THE POINT OF BEGINNING, CONTAINING ONE LOT SITUATED IN THE SW-1/4 OF NE-1/4, SECTION 30, TOWNSHIP 11 NORTH, RANGE 12 EAST, LANDS NOT MAPPED IN THE CITY OF PHILADELPHIA, NESHOPA COUNTY, MISSISSIPPI.

I will convey only such title as vested in me as Substituted Trustee. Jauregui & Lindsey, LLC Substituted Trustee Jauregui & Lindsey, LLC 244 Inverness Center Drive Suite 200 Birmingham, AL 35242 (205) 970-2233

Publication dates: May 26, 2021, June 2, 2021, June 9, 2021, June 16, 2021

IN THE CHANCERY COURT OF NESHOPA COUNTY, MISSISSIPPI IN THE MATTER OF THE ESTATE OF RUSSELL JAMES OWEN, DECEASED CAUSE NO. 2021-17 KARRAH MICHELE OWEN ADMINISTRATRIX

NOTICE TO CREDITORS
Letters of Administration having been granted on the 27 th day of April, 2021, by the Chancery Court of Neshoba County, Mississippi, to the undersigned in the Estate of Russell James Owen, Deceased, notice is hereby given to all persons having claims against the Estate of Russell James Owen, Deceased, to present the same to the Clerk of this Court for probate and registration according to the law

within ninety (90) days from the first publication of this Notice or they will be forever barred.

THIS the 19 th day of May, 2021.

/s/ Karrah Michele Owen

KARRAH MICHELE OWEN,
ADMINISTRATRIX
PREPARED BY:
PRICE W. DONAHO (MSB #103223)
DONAHO LAW FIRM, PLLC
Post Office Box 1549
Madison, Mississippi 39130
Telephone: (601) 213-0883
Facsimile: (601) 368-8672

Email: price@donahoolawfirm.com
Attorney for Administratrix

SUBSTITUTE TRUSTEE'S NOTICE OF FORECLOSURE SALE

WHEREAS, on November 28, 2003, Ophelia Hunter and Floyd Hunter executed a certain deed of trust to Mel Westerfield, Trustee for the use and benefit of Union Planters Bank NA, which deed of trust is of record in the office of the Chancery Clerk of Neshoba, County, state of Mississippi, in Book 611, Page 769; and WHEREAS, Regions Bank Successor by Merger to Union Planters Bank, N.A., the current holder and/or assignee, substituted Jauregui & Lindsey, LLC as Trustee by instrument recorded in the Chancery Clerk's Office on May 17, 2021 in Book 2021, Page 4214; and WHEREAS, Default having been made in the terms and conditions of said deed of trust and the entire debt secured thereby having been declared to be due and payable in accordance with the terms of said deed of trust, Regions Bank Successor by Merger to Union Planters Bank, N.A., the legal holder of said indebtedness, having requested the undersigned Substitute Trustee in said deed of trust, will on July 6, 2021 offer for sale at public outcry and sell within legal hours (being between the hours of 11:00 a.m. and 4:00 p.m.), at the main front door of the County Courthouse of Neshoba County in Philadelphia, Mississippi, to the highest and best bidder for cash the following described property situated in Neshoba County, Mississippi, to wit: Commence at the NE corner of NE 1/4 of NE 1/4, Section 31, Township 11 North, Range 12 East, and run South 850 feet, thence run South 01 degree 03 minutes West 400 feet, thence run North 89 degrees West 920 feet, thence run South 01 degrees 12 mutes West 235 feet to the South line of Blount Street, thence run North 89 degrees West 368.5 feet along the South line of Blount Street for the point of beginning, thence run South 0 degrees 15 minutes East 277.2 feet, thence run North 57 degrees West 142 feet, thence run North 185 feet to the South line of said Blount Street, thence run North 80 degrees 30 minutes East 125 feet along the South line of Blount Street to the point of beginning, containing 0.65 acres, more or less, and being in the S ½ of NE 1/4, Section 31, Township 11 North, Range 12 East, City of Philadelphia, Neshoba County, Mississippi.

Tract II:

Commence at the NE corner of the NE 1/4 of NE 1/4, Section 31, Township 11 North, Range 12 East and run South 850 feet, thence run South 01 degree 03 minutes West 400 feet, thence run North 89 degrees West 920 feet, thence run South 01 degree 12 minutes West 235 feet to the South line of Blount Street, thence run North 89 degrees West 243.5 feet along the South line of Blount Street for the point of beginning, thence run South 01 degree 55 minutes West 377 feet, thence run North 57 degrees West 137 feet, thence run North 0 degrees 15 minutes West 277.2 feet to the South line of said Blount Street, thence run North 80 degrees 30 minutes East 125 feet along the South line of Blount Street to the point of beginning, containing 0.93 acres, more or less, and being in the SE 1/4 of NE 1/4, Section 31, Township 11 North, Range 12 East, City of Philadelphia, Neshoba County, Mississippi.

I will convey only such title as vested in me as Substituted Trustee. Jauregui & Lindsey, LLC Substituted Trustee Jauregui, Lindsey, Longshore & Tingle 244 Inverness Center Drive Suite 200 Birmingham, AL 35242 (205) 970-2233

Publication dates: June 9, 2021, June 16, 2021, June 23, 2021, June 30, 2021

PUBLIC NOTICE SIXTEENTH SECTION LAND RECLASSIFICATION

The Board of Trustees of the Neshoba County School District hereby gives notice of the reclassification of the following Sixteenth Section Public School Trust Land from Residential to Forestry classification.

Section 16, Township 10 North, Range 11 East
Commence at the Southwest corner of the SW ¼ of SE ¼ of Section 16, Township 10 North, Range 11 East, Neshoba County, Mississippi, thence run North 00 degrees 28 minutes 50 seconds West a distance of 992.10 feet along an old barbed wire fence to a fence corner on the North R.O.W. of Neshoba County Road 432; thence run North 64 degrees 09 minutes 50 seconds East a distance of 266.58 feet along said road R.O.W.; thence run North 00 degrees 28 minutes 50 seconds West a distance of 304.00 feet; thence run South 89 degrees 31 minutes 10 seconds West a distance of 240.90 feet to a fence line on the West line of the W ½ of the SE ¼ of said Section 16, Township 10 North, Range 11 East, Neshoba County, Mississippi. Also described as Parcel 30.01 on Map 95 of the Neshoba County Tax Assessor plat maps.

containing 2.00 acres more or less and being located in the W ½ of SE ¼, Section 16, Township 10 North, Range 11 East, Neshoba County, Mississippi. Also described as Parcel 30.02 on Map 95 of the Neshoba County Tax Assessor plat maps.

Any interested party desiring to object to this reclassification must submit such objection in writing to the Chancery Clerk of Neshoba County on or before 5:00 p.m. on the 9 th day of July, 2021.

Neshoba County School District

Lundy Brantley, Superintendent
Publish 3 times: May 26, 2021 and June 2 and 9, 2021

IN THE CHANCERY COURT OF NESHOPA COUNTY, MISSISSIPPI NESHOPA COUNTY DEPARTMENT OF CHILD PROTECTION SERVICES, BY MARCUS D. DAVENPORT, AND JOSEPH ALEXANDER BUCHANAN ROBERT ADRIAN BUCHANAN AND DAVID FLOYD FRANK, MINORS, BY AND THROUGH THEIR NEXT FRIEND, MARCUS D. DAVENPORT, PETITIONERS VS ASHLEY LYNN BUCHANAN, D VID BRIAN FRANK AND UNKNOWN PUTATIVE FATHERS, RESPONDENTS CIVIL ACTION, FILE NO. 2020-347 CHANCERY COURT SUMMONS THE STATE OF MISSISSIPPI

TO: Unknown Putative Fathers, who are not to be found in the State of Mississippi on diligent inquiry and whose post office addresses are not known to the Petitioners after diligent inquiry made by sad Petitioners.

You have been made a Respondent in the suit filed in this Court by the Neshoba County Department of Child Protection Services by Marcus D. Davenport, Social Services Regional Director, and Alaina Rain Irwin, and Kayla Lynn Irwin, minors, seeking to terminate your parental rights as those rights relate to said minors and demanding that the full custody, control and authority to act on behalf of said minors be placed with the Neshoba County Department of Child Protection Services. Respondents other than you in this action are Ashley Lynn Buchanan and David Brian Frank.

YOU ARE SUMMONED TO APPEAR AND DEFEND AGAINST THE PETITION FILED AGAINST YOU IN THIS ACTION AT 9:00 O'CLOCK A.M. ON THE 27TH DAY OF JULY, 2021, IN THE COURTROOM OF THE NESHOPA COUNTY COURTHOUSE AT 401 E. BEACON STREET, STE. 107, PHILADELPHIA, MISSISSIPPI, AND IN CASE OF YOUR FAILURE TO APPEAR AND DEFEND, A JUDGMENT WILL BE ENTERED AGAINST YOU FOR THE RELIEF DEMANDED IN THE PETITION.

You are not required to file an answer or other pleading, but you may do so if you desire.

ISSUED under my hand and seal of said Court, this 25th day of May, 2021.

(SEAL)
/s/Guy Nowell
GUY NOWELL, CHANCERY CLERK NESHOPA COUNTY, MISSISSIPPI PHILADELPHIA, MISSISSIPPI 39350

BY: /s/G. Tate
Deputy Clerk

Briana Keeler, MSB#105474
Office of the Attorney General
P.O. Box 220
Jackson, MS 39205
Telephone No. (601)359-4239
Email: Briana.Keeler@ago.ms.gov

PUBLIC NOTICE SIXTEENTH SECTION LAND RECLASSIFICATION

The Board of Trustees of the Neshoba County School District hereby gives notice of the reclassification of the following Sixteenth Section Public School Trust Land from Farm Residential to Forestry classification.

Section 16, Township 10 North, Range 11 East
Commence at the Southwest corner of the SW ¼ of SE ¼ of Section 16, Township 10 North, Range 11 East, Neshoba County, Mississippi, thence run North 00 degrees 28 minutes 50 seconds West a distance of 992.10 feet along an old barbed wire fence to a fence corner on the North R.O.W. of Neshoba County Road 432; thence run North 64 degrees 09 minutes 50 seconds East a distance of 266.58 feet along said road R.O.W. to and for the point of beginning; thence run North 00 degrees 28 minutes 50 seconds West a distance of 304.00 feet; thence run South 89 degrees 31 minutes 10 seconds West a distance of 240.90 feet to a fence line on the West line of the W ½ of the SE ¼ of said Section 16, Township 10 North, Range 11 east; thence run North 00 degrees 28 minutes 50 seconds West a distance of 780.70 feet along said fence line to a fence corner; thence run South 89 degrees 31 minutes 43 seconds East a distance of 486.18 feet along the fence line; thence run South 974.68 feet to a point on the North R.O.W. of said Neshoba County Road 432; thence run South 66 degrees 14 minutes 16 seconds West 258.00 feet along said R.O.W. back to the Point of Beginning, containing 10.00 acres more or less and being located in the W ½ of SE ¼, Section 16, Township 10 North, Range 11 East, Neshoba County, Mississippi. Also described as Parcel 30.01 on Map 95 of the Neshoba County Tax Assessor plat maps.

Any interested party desiring to object to this reclassification must submit such objection in writing to the Chancery Clerk of Neshoba County on or before 5:00 p.m. on the 9 th day of July, 2021.

Neshoba County School District

Lundy Brantley, Superintendent
Publish 3 times: May 26, 2021 and June 2 and 9, 2021

IN THE CHANCERY COURT OF NESHOPA COUNTY, MISSISSIPPI NE-

SHOBA COUNTY DEPARTMENT OF CHILD PROTECTION SERVICES, BY MARCUS D. DAVENPORT, AND ALAINA RAIN IRWIN AND KAYLA LYNN IRWIN, MINORS, BY AND THROUGH THEIR NEXT FRIEND, MARCUS D. DAVENPORT, PETITIONERS VS. MELISSA LYNN HENRY, STEVEN MIC'AL IRWIN, AND SCOTT CUMBERLAND, RESPONDENTS CIVIL ACTION, FILE NO. 2021-143 CHANCERY COURT SUMMONS

THE STATE OF MISSISSIPPI

TO: Steven Mic'al Irwin, who is not to be found in the State of Mississippi on diligent inquiry and whose post office address is not known to the Petitioners after diligent inquiry made by said Petitioners.

You have been made a Respondent in the suit filed in this Court by the Neshoba County Department of Child Protection Services by Marcus D. Davenport, Social Services Regional Director, and Alaina Rain Irwin and Kayla Lynn Irwin, minors, seeking to terminate your parental rights as those rights relate to said minors and demanding that the full custody, control and authority to act on behalf of said minors be placed with the Neshoba County Department of Child Protection Services. Respondents other than you in this action are others.

YOU ARE SUMMONED TO APPEAR AND DEFEND AGAINST THE PETITION FILED AGAINST YOU IN THIS ACTION AT 9:00, O'CLOCK A.M. ON THE 5TH DAY OF AUGUST, 2021 IN THE COURTROOM OF THE NESHOPA COUNTY COURTHOUSE AT 401 E. BEACON STREET, STE. 107, PHILADELPHIA, MISSISSIPPI, AND IN CASE OF YOUR FAILURE TO APPEAR AND DEFEND, A JUDGMENT WILL BE ENTERED AGAINST YOU FOR THE RELIEF DEMANDED IN THE PETITION.

You are not required to file an answer or other pleading, but you may do so if you desire.

ISSUED under my hand and seal of said Court, this 26th day of May, 2021.

(SEAL)
/s/Guy Nowell
GUY NOWELL, CHANCERY CLERK NESHOPA COUNTY, MISSISSIPPI PHILADELPHIA, MISSISSIPPI 39350

BY: /s/W. Savell
Deputy Clerk

Briana Keeler, MSB#105474
Office of the Attorney General
P.O. Box 220
Jackson, MS 39205
Telephone No. (601)359-4239
Email: Briana.Keeler@ago.ms.gov

PUBLIC NOTICE SIXTEENTH SECTION LAND RECLASSIFICATION

The Board of Trustees of the Neshoba County School District hereby gives notice of the reclassification of the following Sixteenth Section Public School Trust Land from Other to Forestry classification.

Section 16, Township 10 North, Range 11 East
Commence at a point where the North right-of-way of County Road 432 intersects the West right-of-way of County Road 355 located in Section 16, Township 10 North, Range 11 East, Neshoba County, Mississippi, this being the Point of Beginning. Thence run West along the

North right-of-way of County Road 432 a distance of 210.00 feet more or less; thence run North a distance of 200.00 feet more or less; thence run East a distance of 210.00 feet more or less to the East section line and the West right-of-way of County Road 355; thence run South a distance of 210.00 feet more or less to the Point of Beginning containing 1.00 acre more or less. Also designated as Parcel 25.04 on Map 95 of the Neshoba County Tax Assessor plat maps.

Any interested party desiring to object to this reclassification must submit such objection in writing to the Chancery Clerk of Neshoba County on or before 5:00 p.m. on the 9 th day of July, 2021.

Neshoba County School District

Lundy Brantley, Superintendent
Publish 3 times: May 26, 2021 and June 2 and 9, 2021

CHOCTAW TRIBAL CIVIL COURT MISSISSIPPI BAND OF CHOCTAW INDIANS

IN THE MATTER OF

CLASSIFIEDS

Place your ad online
neshobademocrat.com
Monday 5 p.m.
DEADLINE

601-656-4000

Rates ■ 15 words or less \$7.50 per week, each word over 50¢ per word ■ Display classified ads \$13.30 per column inch ■ Place your ad online: neshobademocrat.com/classifieds

SERVICES
Always good ratesInterior,
Exterior carpentry. Electrical,
Plumbing. Pressure
washing, Painting.Call,

text: Tommy 601-663-
6990.--

HELP WANTED
Bookkeeper needed for

accounting firm. At least 3
year's bookkeeping experi-
ence with payroll, general
ledger, bank reconciliations,

and employment taxes.
Must be articulate and able
to get along with clients
and other staff. Send

Resumes to phillyjobof-
fer@gmail.com.--

nished. Historical district.
2BR, 1BA, No pets. 601-
416-2464.---

FAIR CABIN FOR SALE

Fair Cabin for sale Cabin
#963 baths- full bath down-
stairs- bunk
beds\$269,000601-270-
7079

MOVING SALE

Moving Sale Saturday June
12th. King bed, dressers,
desk and other furniture. 50
inch TV, kitchen items, and
clothing. 12590 Hwy 19
North.--

APARTMENT FOR RENT
Apartment for Rent. Unfur-

**SOUTHERN
MINI STORAGE**

Across from Neshoba Central

All sizes 5'x10' to 10'x25'

For rental see
A-1 Auto Parts
224 Beacon St.
Philadelphia

601-656-8247
or 601-650-5475
after hours

CHAPTER 7 BANKRUPTCY
\$545 + Costs
CHAPTER 13 BANKRUPTCY
Court Fees Up Front
Jim Arnold, Attorney
601-656-6914

Whether you're looking to buy
or looking to sell,
the classifieds work!

The Neshoba Democrat is read cover to
cover by over 17,000 readers weekly!
Let the classifieds work for you!

Rates ■ 15 words or less \$7.50 per
week, each word over 50¢ per word
■ Display classified ads -
\$13.30 per column inch
■ Place your ad online:
neshobademocrat.com/classifieds



Growing Mississippi's economy—together.

We live and work in the communities we serve,
and we're invested in growing this place we all call
home. So we're always looking to partner with local
suppliers and contractors to help us bring safer,
more reliable energy to the people of Mississippi.

So if you're a Mississippi-based supplier or
contractor, we'd like to include you on future
proposals for projects. Because no one knows how
to better serve the people of this state than you.

If you'd like to learn more about our qualification
and insurance requirements, bid and contracting
processes and other details, reach out to us
at Supplier@SpireEnergy.com, or visit us at
SpireEnergy.com/Doing-Business-Spire.

At Spire, we're proud to support Hire Mississippi.



CERTIFIED STAFF OPENINGS
For School Year 2021-2022

**CLOSING DATE: 6/15/21 or until
filled**

RED WATER ELEMENTARY SCHOOL
Teacher

Qualifications: Possess a valid Mississippi Educator
License issued by the Mississippi State Department of
Education with appropriate endorsement and emphasis
on grade level and/or subject area being taught. Ability
to work in a rural school system with bilingual stu-
dents.

Excellent communication skills and an academic record
that can withstand critical review. Complete a criminal
background check on county, state, and national levels.
Any record or conviction of criminal or child abuse
charges will result in immediate termination. Employ-
ee in this position is subject to random drug testing.
Must possess a valid Mississippi Driver's license, ade-
quate transportation and personal automobile liability
insurance.

ALL APPLICATIONS MUST BE REQUESTED OR SUBMIT-
TED TO:

Mississippi Band of Choctaw Indians
Attention: Human Resources
P.O. Box 6033, Choctaw Branch
Choctaw, Mississippi 39350

STRIBLING
DRUG STORE

Est. 1948

"For Dependable Prescription Service"

Owner: Larry Stribling • Downtown Philadelphia • (601)-656-2472
"Just Off The Square"

**Neshoba County Nursing
Home Offering CNA Classes**

**Classes begin
July 5, 2021**

All applicants will be subject to Neshoba General
hiring requirements.

Now taking Applications online at
neshobageneral.com. To apply choose Careers and
Student CNA positions. Applicants will be
interviewed that meet New Hire requirements.

**Application Closing
Date June 11, 2021**

DEDICATED TO
EXCELLENCE
IN HEALTHCARE

**NESHOPA
GENERAL**

1001 HOLLAND AVENUE • PHILADELPHIA, MS • 601.663.1200 • WWW.NESHOBAGENERAL.COM

Neshoba County General Hospital - Nursing Home complies with applicable Federal civil rights laws and does not discriminate on the basis of race, color, national origin, sex, disability or age. *ATENCION a todos reportados, tiene a su disposicion servicios gratuitos de asistencia lingüística. Llame al (601) 663-1200. * CHÚ Ý: Nếu bạn nói Tiếng Việt, có các dịch vụ hỗ trợ ngôn ngữ miễn phí dành cho bạn. Gọi số (601) 663-1200.

REQUEST FOR PROPOSALS

The Philadelphia Public School District is
accepting requests for proposals for the following
contractual services:

School Psychometrist

To provide Special Education Evaluations,
Gifted Evaluations, Consultative Services, and
Report Writing

Occupational and Physical Therapists

To provide evaluations and therapy for
students with disabilities who have gross
and fine motor deficits

School Psychologist

To provide Psychological Evaluations,
Consultative Services, and Report Writing

Please ensure that the proposal includes the
specific services offered, along with hourly rates.

Also, note that travel and sustenance are not
permissible. Requests for proposals
will be accepted until the close of business on
June 14, 2021.

Mail Proposals to:
Philadelphia Public School District
ATTN: Tia Little
248 Byrd Avenue
Philadelphia, MS 39350
or email tlittle@phillytornadoes.com

Protect Your Health and Your Future – Avoid Opioid Misuse. Say “No” to Meth and Other Drugs!

The rise of synthetic opioids and stimulant drugs, as well as amplified
mental health conditions related to Covid-19, has caused the highest
number of overdose deaths ever. Over 87,000 American lives were
taken by drugs!

Facts about these dangerous drugs:

Opioids are a class of drugs that includes prescription pain killers and
heroin. Mixing opioids with alcohol or other drugs can slow down or
stop your breathing and your heart. Misuse of opioid drugs is a leading
cause of accidental death in the United States.



Methamphetamine, also known as meth, is an addictive stimulant
drug. Some people notice an urge to use meth after the first use.

Sometimes people use meth in
combination with heroin, prescription
opioids or other drugs. This greatly
increases the likelihood of health
problems, overdose and death. Illegal
drugs can be mixed with dangerous
drugs or toxic chemicals, such as fentanyl, that can cause poisoning or
death. Just a sprinkle of fentanyl is deadly.



IT ONLY TAKES A LITTLE TO LOSE A LOT.
Overcoming addiction is not easy, but it's possible.



For More Information contact the
Choctaw Tribal Opioid Response Project Team
(601) 389-4150

My urban wildlife habitat

By FELDER RUSHING
rushingfelder@yahoo.com



Live and learn, Eh? And sometimes relearn, which happened last week when I made a critical error when applying a natural insecticide.

Let me set this up, with apologies to neighbors. See, my garden, true to its etymology, is a “guarded space” designed to be viewed from the house looking towards the street; outsiders are actually looking at the messy back of my fence. Concealed from the street is the orderliness, the walks, decks, small but neatly designed flower beds, and garden art.

I do plant a little for passers-by, especially children looking for cut flowers or culinary herbs, or who come to admire the wildflowers, butterflies, hummingbirds, and other not-so-pretty wildlife. But overall, being a natural plant hoarder, I’m comfortable with a tumbled mélange of plants coming into glory or fading to make room for others all year long.

However, rather than tend a static scene with a neat flowerbed here and there, I dump it all together, unified with meandering walks and open, more people-friendly sitting areas. I favor stuff that comes and goes and requires little or no maintenance other than light weeding. Love plants with great foliage, such as iris and cannas, but especially those that attract and give succor to a supporting cast of wildlife; I even have an Urban Wildlife Habitat sign by the street to clue folks that I am doing all this on purpose.

Favorite spring-summer-fall flowering plants include lantana, Africa blue basil, Guara, cannas, perennial sages and blue salvias, tropical milkweed (wow, what a looker!), zinnias, cleome, and - one of the best of

all - the tall “purpletop” verbena. There are others, of course, but these are among the most dependable pollinator plants for my Mississippi meadow garden.

To top off it off as a wildlife habitat, I include several small water features for birds, bees, wasps, butterflies, dragonflies, and the like. Most are shallow so I don’t worry about mosquitoes (though truthfully we all have ‘em anyway), and I am careful to include shallow areas with gravel for bees and butterflies, which won’t step into open water.

Neat thing about a mixed garden is how plant pests are diluted, and easier targets for increased concentrations of natural predators. However, some of my plants occasionally get overwhelmed with little aphids, leaf hoppers, and other small plant suckers; some are moved around by ants which “milk” them for sweet honeydew.

To protect the overall garden wildlife, I rarely use any sort of insecticide, other than the occasional spot-spraying of insecticidal soap or late-afternoon shot of pyrethrin (both are effective natural products). I also treat errant fire ant mounds, though I usually leave one or two alone if

they aren’t in my way; fire ants eat ticks, y’know.

And I have dabbled in introducing live predators such as lacewings and ladybugs/beetles; you can buy lacewing eggs, and bags of live adult lady beetles, which as both adult and larvae are voracious other-bug eaters.

Which is where I messed up, by breaking a cardinal rule of pesticide application; I did not read or following directions before use. In my excitement, I opened up the bag of squirming beetles, poured them over some plants, and...watched them all fly away.

Surprised, I read the instructions, and too late saw that I was supposed to release them at night, lest they all fly away. Reread this column’s opening statement.

Hopefully some will come back. But I don’t want too many lest they eat all the goodies from my other good bugs After all, you can’t have good bugs for long without aphids for them to eat.

Felder Rushing is a Mississippi author, columnist, and host of the “Gestalt Gardener” on MPB Think Radio. Email gardening questions to rushingfelder@yahoo.com.

2021 CONSUMER CONFIDENCE REPORT

Is my water safe?

• Yes, your water is safe and meets all U. S. Environmental Protection Agency (EPA) and safe drinking water health standards.

Do I need to take special precautions?

• Some people may be more vulnerable to contaminants in drinking water than the general population. Immuno-compromised persons such as persons with cancer undergoing chemotherapy, persons who have undergone organ transplants, people with HIV/AIDS or other immune system disorders, some elderly, and infants can be particularly at risk from infections. These people should seek advice about drinking water from their health care providers. EPA/Centers for Disease Control (CDC) guidelines on appropriate means to lessen the risk of infection by Cryptosporidium and other microbial contaminants are available from the Safe Water Drinking Hotline (800-426-4791).

Where does my water come from?

• Philadelphia Utilities uses five deep wells, pumping from the Lower Wilcox Aquifer, to supply water for our customers.

Source water assessment and its availability

• The SWA is available online at: <https://landandwater.deq.ms.gov/swap/reports/report.aspx?id=0500008>

Why are there contaminants in my drinking water?

• Drinking water, including bottled water, may reasonably be expected to contain at least small amounts of some contaminants. The presence of contaminants does not necessarily indicate that water poses a health risk. More information about contaminants and potential health effects can be obtained by calling the Environmental Protection Agency’s (EPA) Safe Drinking Water Hotline (800-426-4791).

How can I get involved?

• Our regularly scheduled meetings are held at 8:00 am on the second Thursday of each month at the main office of Philadelphia Utilities, located at 435 Myrtle St. East, Philadelphia, Ms. Anyone wishing to be placed on the meeting agenda, should contact Kirk R. Morgan, Executive Secretary, at 601-656-1121.

Required Fluoridation Information

• To comply with the “Regulation Governing Fluoridation of Community Water Supplies”, MS0500008 is required to report certain results pertaining to fluoridation of our water system. The number of months in the previous calendar year in which average fluoride sample results were within the optimal range of 0.6 - 1.2 ppm was 11. The percentage of fluoride samples collected in previous calendar year was within the optimal range of 0.6 - 1.2 ppm was 92%.

Monitoring and reporting of compliance data violations

• 3A - Monitoring, Routine, Minor (RTCR) 11/01/2020-11/30/2020 E. Coli Complete

Additional Information for Lead

• If present, elevated levels of lead can cause serious health problems, especially for pregnant women and young children. Lead in drinking water is primarily from materials and components associated with service lines and home plumbing. Philadelphia Utilities is responsible for providing high quality drinking water, but cannot control the variety of materials used in plumbing components. When your water has been sitting for several hours, you can minimize the potential for lead exposure by flushing your tap for 30 seconds to 2 minutes before using water for drinking or cooking. If you are concerned about lead in your water, you may wish to have your water tested. Information on lead in drinking water, testing methods, and steps you can take to minimize exposure is available from the Safe Drinking Water Hotline or at <http://www.epa.gov/safewater/lead>.

WATER QUALITY DATA TABLE

In order to ensure that tap water is safe to drink, EPA prescribes regulations which limit the amount of contaminants in water provided by public water systems. The table below lists all of the drinking water contaminants that we detected during the calendar year of this report. Although many more contaminants were tested, only those substances listed below were found in your water. All sources of drinking water contain some naturally occurring contaminants. At low levels, these substances are generally not harmful in our drinking water. Removing all contaminants would be extremely expensive, and in most cases, would not provide increased protection of public health. A few naturally occurring minerals may actually improve the taste of drinking water and have nutritional value at low levels. Unless otherwise noted, the data presented in this table is from testing done in the calendar year of the report. The EPA or the State requires us to monitor for certain contaminants less than once per year because the concentrations of these contaminants do not vary significantly from year to year, or the system is not considered vulnerable to this type of contamination. As such, some of our data, though representative, may be more than one year old. In this table you will find terms and abbreviations that might not be familiar to you. To help you better understand these terms, we have provided the definitions below the table.

Contaminants	MCLG or MRDL G	MCL, TT, or MRDL	Detect In Your Water	Range		Sample Date	Violation	Typical Source
				Low	High			
Disinfectants & Disinfection By-Products								
(There is convincing evidence that addition of a disinfectant is necessary for control of microbial contaminants)								

Contaminants	MCLG or MRDL G	MCL, TT, or MRDL	Detect In Your Water	Range		Sample Date	Violation	Typical Source
				Low	High			
Chlorine (as Cl2) (ppm)	4	4	1.1	.7	1.9	2020	No	Water additive used to control microbes
Haloacetic Acids (HAA5) (ppb)	NA	60	2	NA	NA	2020	No	By-product of drinking water chlorination
THMs [Total Trihalomethanes] (ppb)	NA	80	9.8	NA	NA	2020	No	By-product of drinking water disinfection
Inorganic Contaminants								
Barium (ppm)	2	2	1.4	NA	NA	2019	No	Erosion of natural deposits
Chromium (ppb)	100	100	.7	NA	NA	2019	No	Erosion of natural deposits
Fluoride (ppm)	4	4	.92	.49	1.23	2020	No	Water additive which promotes strong teeth
Contaminants	MCL G	AL	Your Water	Sample Date	# Samples Exceeding AL	Exceeds AL	Typical Source	
Inorganic Contaminants								
Copper - action level at consumer taps (ppm)	1.3	1.3	.1	2019	0	No	Corrosion of household plumbing systems; Erosion of natural deposits	

ADDITIONAL CONTAMINANTS

In an effort to insure the safest water possible the State has required us to monitor some contaminants not required by Federal regulations. Of those contaminants only the ones listed below were found in your water.

Contaminants	State MCL	Your Water	Violation	Explanation and Comment
Sodium		17000 ppb	No	Likely source of contamination - Water Treatment Chemicals or Water Softeners.

Unit Descriptions	
Term	Definition
ppm	ppm: parts per million, or milligrams per liter (mg/L)
ppb	ppb: parts per billion, or micrograms per liter (µg/L)
NA	NA: not applicable
ND	ND: Not detected
NR	NR: Monitoring not required, but recommended.

Important Drinking Water Definitions	
Term	Definition
MCLG	MCLG: Maximum Contaminant Level Goal: The level of a contaminant in drinking water below which there is no known or expected risk to health. MCLGs allow for a margin of safety.
MCL	MCL: Maximum Contaminant Level: The highest level of a contaminant that is allowed in drinking water. MCLs are set as close to the MCLGs as feasible using the best available treatment technology.
TT	TT: Treatment Technique: A required process intended to reduce the level of a contaminant in drinking water.
AL	AL: Action Level: The concentration of a contaminant which, if exceeded, triggers treatment or other requirements which a water system must follow.
Variances and Exemptions	Variances and Exemptions: State or EPA permission not to meet an MCL or a treatment technique under certain conditions.
MRDLG	MRDLG: Maximum residual disinfection level goal. The level of a drinking water disinfectant below which there is no known or expected risk to health. MRDLGs do not reflect the benefits of the use of disinfectants to control microbial contaminants.
MRDL	MRDL: Maximum residual disinfectant level. The highest level of a disinfectant allowed in drinking water. There is convincing evidence that addition of a disinfectant is necessary for control of microbial contaminants.
MNR	MNR: Monitored Not Regulated
MPL	MPL: State Assigned Maximum Permissible Level

FOR MORE INFORMATION CONTACT:

Contact Name: Tim Hisaw
Address: PO Box 88 • Philadelphia, MS 39350 • Phone: (601) 656-1601

"NOTICE OF PROPOSED AD VALOREM TAX EFFORT"

Philadelphia Public School District

The Philadelphia Public School District will hold a public hearing on its proposed school district budget for fiscal year 2021 on Thursday, June 17, 2021 at 12:00 pm at Philadelphia Public School District Support Services Building. At this meeting, a proposed ad valorem tax effort will be considered.

The Philadelphia Public School District is now operating with a projected total budget revenue of \$11,824,979. Of that amount, twenty-nine (29) percent or \$3,388,465 of such revenue is obtained through ad valorem taxes. For next fiscal year, the proposed budget has total projected revenue of \$18,106,122. Of that amount, nineteen (19) percent or \$3,454,533 is proposed to be financed through a total ad valorem tax levy.

For the next fiscal year, the proposed increase in ad valorem tax effort by Philadelphia Public School District may result in an increase in the ad valorem tax millage rate. Ad Valorem taxes are paid on homes, automobile tags, business fixtures and equipment, and rental real property.

Any citizen of Philadelphia Public School District is invited to attend this public hearing on the proposed ad valorem tax effort, and will be allowed to speak for a reasonable amount of time and offer tangible evidence before any vote is taken.



Love
Out 
Loud
Neshoba

Let's serve our
community together!

June 21-25
8a.m.-12p.m.
Neshoba County
Baptist Center

Ministry Opportunities

- Park clean up
- Crisis Pregnancy Center
- God's Closet
- Beds for Kids
- Planting trees
- Animal vaccinations
- Building ramps
- Cards for soldiers
- Drive through prayer
- Open Arms
- Backyard VBS
- Blessing Box
- Yard work
- Donations



Love
Out 
Loud
Neshoba

Community-Wide WORSHIP SERVICE

Neshoba County Coliseum



Dr. Fred Luter

Dr. Luter serves as the senior pastor of Franklin Avenue Baptist Church of the 9th Ward in New Orleans, LA. Dr. Luter served as the president of the Southern Baptist Convention in 2012 and 2013



Michael Fedrick

Michael is a worship leader based out of Kosciusko, MS currently serving as the worship pastor at Williamsville Baptist Church. Michael's mission is to passionately lead Gospel-saturated worship that points others to Jesus.

June 23, 2021 @ 6:30 p.m.