

Serving more than  
146 acres of  
Neshoba County

# The Fair Times.

Our 39th year

**MONDAY**  
July 26,  
2021

## Weather



KADEMI

Scattered Thunderstorms  
High: 91 Low: 75

Winds SW at 5 to 10 mph. Chance of rain  
50 percent.

## What's doin'

### TODAY

- 9:30 a.m. – Clothes Line Art Contest, Founders Square
- 1:00 p.m. – ECCC Variety Program, Founders Square
- 8:00 p.m. – Pageant Program, Grandstand

*Complete schedule, page 12A*

## Inside



■ Atkinsons excited to be 'at home', 2C.

■ Peppermint ice cream is a Wells staple, 2D.

■ Pageant preview, 1E.

## FUN WITH FRISBEES



Reed Kilgore of Philadelphia throws a frisbee in front of Cabin 222.



# Veterans aim of suicide prevention event



U.S. Sen. Roger Wicker, center, prepares to lead a group of 30 to do 22 pushups. Pictured with Wicker are, from left, Oxford Mayor Robyn Tannehill, Neshoba County Sheriff Eric Clark and U.S. Rep. Trent Kelly, a Neshoba County native.

More than 30 people joined U.S. Sen. Roger Wicker at the Pavilion Friday evening to do pushups to promote suicide prevention among veterans.

The event was part of the 22 Pushup Challenge and included U.S. Rep. Trent Kelly (a Neshoba County native), Oxford Mayor Robyn Tannehill, Neshoba County Sheriff Eric Clark, and Cooper and Arch Manning just to name a few.

The 22 Pushup Challenge was created to raise awareness for veterans' suicide prevention and mental health by Active Heroes, a 501c3 Charity with the mission to support all U.S. military service members, veterans and their families through physical, educational and emotional programs in an effort to eliminate suicide.

Anyone who registers to participate in the 22 Pushup Challenge not only has to complete 22 pushups, they also have to complete 22 pushups for 22 days.

"It means a lot to get the message out to help persuade veterans who might be having a problem that it is a treatable medical condition," Wicker said of taking on the challenge.

Camp Murphy of Cabin 210 completed the challenge and said he hopes it goes viral.

As the challenge is multiplied it will "better remind people of the sacrifices made," Murphy said.

The organization offers therapeutic and recreational programs at a 147-acre ranch in Kentucky.

A fishing pond, disc golf course, and hiking and running trails are part of the retreat center.

Active Heroes and its partners run a Veterans Crisis Line that connects veterans in crisis and their families and friends with qualified, caring Department of Veterans Affairs responders through a confidential toll-free hotline, 1-800-273-8255. Callers receive confidential support 24 hours a day, 7 days a week, 365 days a year. Veterans can also start a chat by texting any message to 838255.

For more information on Active Heroes of the 22 Pushup Challenge, visit [activeheroes.org](http://activeheroes.org).



Front left, Shaun Seales, Ward 4; Mayor James Young; Alderman at Large - James Waltman  
Back left, James Tatum, Ward 3; Jim Fulton, Ward 2; Justin Clearman, Ward 1

All of us at City Hall would like to welcome you all to the 2021 Neshoba County Fair!

The City of Philadelphia, Mississippi

City Hall • 525 Main Street • Philadelphia, MS 39350-2954 • 601-656-3612

## The Fair Times.

**James E. Prince III**  
Editor and Publisher  
[jprince@neshobademocrat.com](mailto:jprince@neshobademocrat.com)

**Steve Swogetinsky**  
Managing Editor  
[news1@neshobademocrat.com](mailto:news1@neshobademocrat.com)

**Joy Stewart**  
Advertising  
[joy@neshobademocrat.com](mailto:joy@neshobademocrat.com)

**Duncan Dent**  
Staff reporter

**Payton Bishop**  
Staff reporter

**Audrey Hall**  
Staff reporter

**Contributors:** John Lee, Scott Hawkins, Jason Dyess, Coleman Eakes

**If you miss a Fair Times**  
The Fair Times is published daily during the Fair. On Wednesday, The Neshoba Democrat is also delivered. If your area is having problems with Fair Times delivery, please contact us at (601) 656-4000 or text (601) 416-5117. The Fair Times is free and extra copies are available in bright yellow racks at the northeast entrance to the Square and along the road to the new section.

### HOW TO CONTACT US

**By telephone**  
Telephone: (601) 656-4000  
Fascimile: (601) 656-6379  
Text: (601) 416-5117

**Web**  
[thefairtimes.com](http://thefairtimes.com)  
[neshobademocrat.com](http://neshobademocrat.com)

**E-mail**  
[fairtimes@neshobademocrat.com](mailto:fairtimes@neshobademocrat.com)

**Social networking**  
Facebook: The Fair Times  
Twitter: @fairtimes #NCF2016  
Instagram: @thefairtimes

**Physical address**  
439 Beacon Street  
Philadelphia, MS 39350

**Story ideas**  
601-656-4000  
[fairtimes@neshobademocrat.com](mailto:fairtimes@neshobademocrat.com)  
txt 601-416-5117

News tips are encouraged.

Published by the staff of

THE NESHOBA DEMOCRAT





JENNIFER PHILLIPS, FNP-BC



# YOUR HEALTH IS OUR PRIORITY



**NESHOPA GENERAL**

Neshoba Central School Clinic \ 601.676.0525  
Located on the Neshoba Central Elementary Campus  
1002 St. Francis Drive \ Philadelphia, MS 39350

Neshoba County General Hospital – Nursing Home complies with applicable Federal civil rights laws and does not discriminate on the basis of race, color, national origin, age, disability, or sex.  
ATENCIÓN: si habla español, tiene a su disposición servicios gratuitos de asistencia lingüística. Llame al (601) 663-1200. /CHÚ Ý: Nếu bạn nói Tiếng Việt, có các dịch vụ hỗ trợ ngôn ngữ miễn phí dành cho

*Dedicated to Excellence in Healthcare*

[www.neshobageneral.com](http://www.neshobageneral.com)



SHANNON KIRKLAND, FNP-C



# YOUR HEALTH IS OUR PRIORITY



**NESHOPA GENERAL**

Philadelphia School Clinic \ 601.656.9183  
Located inside Philadelphia Elementary School  
406 Stribling Street \ Philadelphia, MS 39350

Neshoba County General Hospital – Nursing Home complies with applicable Federal civil rights laws and does not discriminate on the basis of race, color, national origin, age, disability, or sex.  
ATENCIÓN: si habla español, tiene a su disposición servicios gratuitos de asistencia lingüística. Llame al (601) 663-1200. /CHÚ Ý: Nếu bạn nói Tiếng Việt, có các dịch vụ hỗ trợ ngôn ngữ miễn phí dành cho

*Dedicated to Excellence in Healthcare*

[www.neshobageneral.com](http://www.neshobageneral.com)



# Keeping the Fair Hydrated Every Day!

**PUT SOME JUNCTION  
IN YOUR FUNCTION**

Call Denise for help planning your next  
party or event! 601-750-1685

*World's Best Chicken Tenders.*

*"But those who drink of the water that I will give them will never be  
thirsty. The water that I will give will become in them a spring of  
water gushing up to eternal life." - John 4:14*



**WE  
CATER!**

Philadelphia • Carthage • Newton • Macon  
Oxford • Ridgeland • Union • Scooba • Louisville







**CHARLEIGH, CAROLINE, WARNER, GRAHAM, AND SALLYANNE  
ARE READY TO BRING THE FUN BACK TO FAIR 2021**

ANNA CLARE SAXON, DMD

 **AIRPARK**  
— FAMILY DENTISTRY —

JOHN ANTHONY STEELE II, DMD

1060 HOLLAND AVE • PHILADELPHIA, MS 39350 • (601) 656-3275



# Art contest this morning

**By Duncan Dent**

Children can compete in the Clothesline Art Contest at the Pavilion today from 9:30 a.m. to 11 a.m.

Any child 17 years old and younger can compete and create their own art using watercolor, markers or colored pencils.

The competition will be split up by the following age groups: 0-2, 3-4, 5-6, 7-8, 9-10, 11-12 and 13-17. First, second and third place ribbons will be awarded in each category.

Any child who wants to create must have started the artwork between 9:30-10:30 a.m. and the work must be fully complete by 11 a.m. The topic for the art is any-

thing related to the Fair.

The art will be on display between 3:30 p.m. and 4:30 p.m. today on the Square. Parents may begin collecting the art at 4:30 p.m. and all art must be picked up by 5 p.m. If any art is not collected, they will need to pick it up from the Fair office.

Jennifer Felton is coordinating the event this year for her first time. She is an elementary school teacher at Union Elementary School.

"It is so incredible to see the art they are going to create," Felton said. "There are so many depictions of the Fair they could have from the Midway to the horses or the cabins, just about anything."




Libby Perry, Tucker Hardy, Miles Perry, Nola Grigson and Anadine Posey take a water break at Cabin 263.


**MICHAEL GUEST**


**U.S. CONGRESS**




## Have a great Fair!

 [facebook.com/MichaelGuestforCongress](https://facebook.com/MichaelGuestforCongress)

 [@GuestCongress](https://twitter.com/GuestCongress)

 [Instagram.com/MichaelGuestforCongress](https://Instagram.com/MichaelGuestforCongress)

 [MichaelGuest.ms](https://MichaelGuest.ms)

Paid for by Friends of Michael Guest

**Feed the whole Family during the Fair.**



**Dine-In Only Specials throughout the Week.**

**FAMILY MEALS ONLY \$45.00**

Pancake breakfast, Chicken Spaghetti, Chicken Alfredo, Italian noodle salad and Spaghetti Served with Salad and Bread as a family meal. Feeds 4 and includes 1 gallon of tea.

OUR HOMETOWN  
**PHILADELPHIA**  
FAMILY STYLE RESTAURANT

257 West Beacon St. • Philadelphia • 601.650.3689





# Hair stylist to sing anthem at Pageant

**By Payton Bishop**

Madison Hardy Dennis won't be styling hair but she is singing the national anthem this evening at the Miss Neshoba County Fair Pageant.

Originally from Neshoba County, she and her husband moved to Nashville in 2007.

She graduated from Belmont University in 2011 with a music business degree. Following graduation, she went on to work for CMT and MTV.

Dennis runs her own hair styling business in Nashville now that she opened in 2017. She has been styling hair for weddings, artist shoots and pageants including contestants in Miss America and Miss United States.

The part she looks forward to the most this week is not having a true agenda.

"You can just go up to any cabin and talk to anyone sitting on their porch," she said.

They are in Cabin 95 that was rebuilt in 1989, the year she was born.

She is spending this week with her two children, Olivia and Levi, who are experiencing their second Fair; and her husband, Daniel, who is enjoying his third Fair.

Normally for Dennis, the Fair is a pretty busy week with her styling at least one of the Miss Neshoba County Fair Pageant contestants.

This week, however, she will not be styling hair at the pageant. But, will be singing the national anthem.

Her brother is rising country music sensation Michael Hardy, or HARDY as he is known professionally and he will be performing Tuesday night.



Madison Dennis will be singing the national anthem at the Miss Neshoba County Fair Pageant tonight.

*Y'all Have a Great Time at the Fair!*

## ROGER WICKER IS FIGHTING FOR YOU

- Supporting a stronger, more capable military to defend our nation (*SHIPYARD Act S.1441*)
- Blocking Democrats' attempts to take over our elections
- Holding Big Tech accountable for conservative censorship (*PRO-SPEECH Act S.2031*)
- Supporting job creation and infrastructure like roads, bridges, and broadband internet

Roger  
**WICKER**  
U.S. Senator

PAID FOR BY WICKER FOR SENATE

wickerforsenate.com





Katie Rea Tinsley and Tracy Tinsley of Philadelphia enjoy the morning sunshine at Cabin 237.



Katilyn Mooney, Nataley Mooney, Daniel Mooney and Connie Willis head to Founder's Square.

**WELCOME BACK TO THE FAIR!**

**FEED THE FAMILY!**

**Krystal**

10 CANAL PLACE • PHILADELPHIA  
601-389-1100

HWY 19 SOUTH • MERIDIAN  
601-693-6277

*Rose Hill Cemetery Costumed Tour*

12th Anniversary Tour

The cast of Rose Hill Company brings Meridian history to life.

**SAT., SEPT. 25 • 7-9 P.M.**

**FREE ADMISSION (DONATIONS ACCEPTED)**

**OFF EIGHTH ST. • MERIDIAN**

Parking available at Calvary Baptist Church for a small fee.  
601.479.2483 or 601.482.9752

Funding by Meridian Council for the Arts.

*Largest storytelling event in east Mississippi.*

Romani burial grounds are encompassed in the cemetery includes the King & Queen of the Gypsies.

Victorian-age cemetery with Meridian stories of history as well as those from throughout the State.

Rose Hill Company wearing period costumes teaches history and heritage through the arts of storytelling and drama.



# Breazeale, Hazelwood win Dickey Nowell Award

**By Steve Swogetinsky**

You could say Saturday was a long day for Preston Breazeale.

Breazeale competed in the 41st Heart O' Dixie Triathlon and was the winner of the Dickey Nowell Memorial Award which goes to the first person from Neshoba County to finish. Breazeale finished with a time of 2:53:19 and 56th overall.

But that was just the end of his day. Breazeale, 25, is a cook at the Silver Star Casino and had worked until 1:30 a.m.

"I got off and came to compete in the race," Breazeale said. "I have run the Heart O' Dixie before and it has always been a goal of mine to win the Dickey Nowell Award. I always focus on a certain time and try to beat my time from the year before.

Jerica Hazelwood was the winner of the female Dickey Nowell Memorial award. She finished with a time of 3:15.19 and placed 116 overall.

The Heart O' Dixie has many traditions and the Dickey Nowell award tops the list.

The award is given in memory of Nowell, former Philadelphia resident and a longtime participant in the Heart O' Dixie. He ran in eight races before losing his battle with cancer. He had many friends in Philadelphia. His family started the award and the club later voted to continue it.

John and Victoria Nowell were present at this year's triathlon and congratulated the winners.



Victoria and John Nowell, left, congratulate the 2021 winners of the Dickey Nowell Memorial Award, Jerica Hazelwood and Preston Breazeale.



Bobby's Jewelry  
Welcomes You to the  
**2021 Neshoba  
County Fair!**

SPECIALIZING IN BRIDAL JEWELRY SINCE 1998  
New Jewelry and Estate Jewelry

*Come see us for all your jewelry needs!*

*Bobby's*  
JEWELRY

*Specializing in Bridal Jewelry since 1998*

201 W. Beacott St. Philadelphia, • 601-656-9708

Bobby M. Smith and Bobbie Kay Waddell, Owners





Brantley Tiemann, Silas Braun, Sutton Reed and Paisley Reed sell crafts by the track.



Seated from left to right: Obbie Riley - District 5, Kevin Cumberland - District 2, Keith Lillis - District 1,  
Back row from left to right: Kevin Wilcher - District 4 and Kinsey Smith - District 3

WELCOME TO  
**PHILADELPHIA  
& NESHOPA  
COUNTY**

A GREAT PLACE TO VISIT,  
A GREAT PLACE TO CALL HOME.

THE NESHOPA COUNTY  
**BOARD OF SUPERVISORS**





Damon Durr and Sunny Childs at Cabin 236 escape the heat of the day.

Stevie Lynn and Cort McLaurin of Starkville take a water break at Cabin 225.

## Best wishes for a safe, fun and healthy Fair Week!

### Rush Medical Clinic Philadelphia

*A division of Laird Hospital*

Clinic hours

Monday–Friday 8 a.m.–6 p.m.

Saturday 8 a.m.–12 noon

## Walk-ins Welcome!



### Providers

Dr. Krista Boyette • Dr. Patrick Eakes • Dr. Chris Webb • Kayla Barnett, FNP

For appointments:  
**601.656.6921**



1106 Central Drive | Philadelphia, MS 39350 | [rushhealthsystems.org](http://rushhealthsystems.org)



## MONDAY ★ JULY 26, 2021

Midway open 12:00 p.m. – 1:00 a.m. Mitchell Bros. and Sons Amusements.  
U.S. Post Office, Neshoba County Fair Station, Open 12:30 p.m. to 3:30 p.m.  
Exhibit Hall OPEN 8:00 a.m. to 10:00 p.m.

- 8:00- 11:30 a.m. Check in Beef Cattle – Cattle Arena
- 9:30 -11:00 a.m. Clothes Line Art Contest – Founders Square. Jennifer Felton, Chairperson
- 1:00 p.m. East Central Community College Variety Program – Founders Square
- 2:00 p.m. Harness and Running Horse Races – Racetrack  
Sponsored in part by Pearl River Resort  
**Colors presented by Neshoba Central HS Jr. ROTC**
- 4:00 p.m. Clothes Line Art Exhibit – Founders Square
- 7:00 p.m. Twilight Hot Air Balloon Glow – Racetrack, **WEATHER PERMITTING**  
Ken Johnston and Frank Anger, Balloonists
- 7:30 p.m. Invocation – Rev. Dr. Tommy Jennings, First United Methodist Church;  
Official Opening of the 2021 Neshoba County Fair, Gilbert Donald, President;  
Presentation of the 2021 Neshoba County Fair Youth Achievement Award;  
**National Anthem by Madison Hardy Dennis with ASL (Sign Language) by Burgin McClellan - Grandstand**
- 8:00 p.m. Pageant Program, selecting "Miss Neshoba County Fair" -Grandstand  
Keith Page, Emcee; Pages, Layton Seth Coward, Addy Walker Phillips,  
Rivers Makinley Pope and Marianna Grace Truett: Entertainment by  
Madison Hardy Dennis
- 9:30 p.m.-12:30 a.m. Dance Music by **Hairicane** – Founders Square
- 1:00 a.m. **MIDWAY AND CONCESSIONS CLOSE**

Livestock show barns open 9:00 a.m. – 5:00 p.m., displaying top quality  
Beef Cattle, Dairy Cattle and Sheep



Wilder Stanley and Dylan Jones play with their cars on the steps of Cabin 227.



Welch Forest Products would  
like to welcome all of you to the  
2021 Neshoba County Fair!



*"Buyer of all types of timber and land."*

U N I O N , M S • 6 0 1 - 7 7 4 - 8 2 0 0



# Woodstock Furniture **NEW PHILADELPHIA** **VALUE CENTER** **LOCATION**

**THESE  
ITEMS  
IN STOCK**

## **FAIR SPECIALS**

**THESE  
ITEMS  
IN STOCK**

**NEXT DAY DELIVERY + 24 MONTHS FREE FINANCING!**



**Reclining Sofa & Loveseat \$1497\***



**Queen Bed \$897\* / King Bed \$1097\***



**Table & 6 Chairs \$597\***



**Reclining Sofa & Loveseat \$1797\***



**Queen Mattress \$297\* / King \$397\***



**Sectional \$897\***



**Big Man Recliner \$597\***



**Queen, Full or Twin Bed, Dresser & Mirror \$497\* / King + \$99\***



**Sofa & Loveseat \$1097\***



**Rocking Recliner \$497\***

**"Wishing Everyone A  
Safe & Happy Fair!"**

Offer valid through 8/22/21 or while supplies last. No guarantee exists that "In Stock" items are always in stock due to fluctuations in sales volume. Extended financing over 24 months does not qualify for special pricing. Cannot be combined with other offers. Mattress prices are for the mattress only and do not include foundation or box spring. Mattress foundations are available for purchase. Free items available while supplies last. Next day in carton to first floor doorstep delivery on new purchases made before 2:00 PM CST of in stock items being delivered inside Neshoba County, MS. Sundays excluded. Delivery time frame subject to availability. Showroom hours may vary due to Covid-19. Although every precaution is taken, occasionally errors do occur in print. We reserve the right to correct any such error.



## Woodstock Furniture **VALUE CENTER**

**Open 7 Days A Week!**

Mon-Sat 10am-7pm | Sun 1pm-5pm





Erin Hederman and William Janous enjoy a morning walk.



Ben and Roma Banks of Baltimore, spend some time in the swing at Cabin 25.

**WELCOME BACK  
TO THE NESHOBA  
COUNTY FAIR!**







Jake Weston Phillips of Philadelphia plays with his train set in front of Cabin 76.

Jessie-Lee Townsend of Philadelphia cools off with a fan.



## THANK YOU

Thank you for the opportunity to serve in the MS Senate over the last six years. During this time, I have proudly supported legislation to lower taxes, to support small businesses, to defend our second amendment rights, along with the right to life and religious liberties. I am humbled by the privilege to continue serving you, and I will keep working hard to protect the conservative values of the people of Mississippi – for my family and for yours!

– Senator Jenifer Branning



**JENIFER**  
**BRANNING**  
S T A T E S E N A T E





# TATE REEVES



## Governor

**“The Neshoba County Fair is one of our family's favorite traditions,  
and we are thrilled to be back this year!”**

Paid for by Tate for Governor

[TateReeves.com](http://TateReeves.com)

 [fb.com/tatereeves](https://fb.com/tatereeves)

 [@tatereeves](https://twitter.com/@tatereeves)

 [@tatereeves](https://instagram.com/@tatereeves)



## WATER, WATER EVERYWHERE



Gray Sledge, Levi Dees, Brax Boulden, Atley Boulden, Gracie Dees and Crue Whitaker cool off at Cabin 317.



God's  
House



[WWW.GODSHOUSEMS.COM](http://WWW.GODSHOUSEMS.COM)

**LIKE US ON FACEBOOK "ATTENDING GOD'S HOUSE!"**

**HAVE A SAFE  
& BLESSED FAIR!**

**SERVICE HOURS**

**SUNDAY WORSHIP: 11:00AM  
WEDNESDAY NIGHT: 6:00PM**

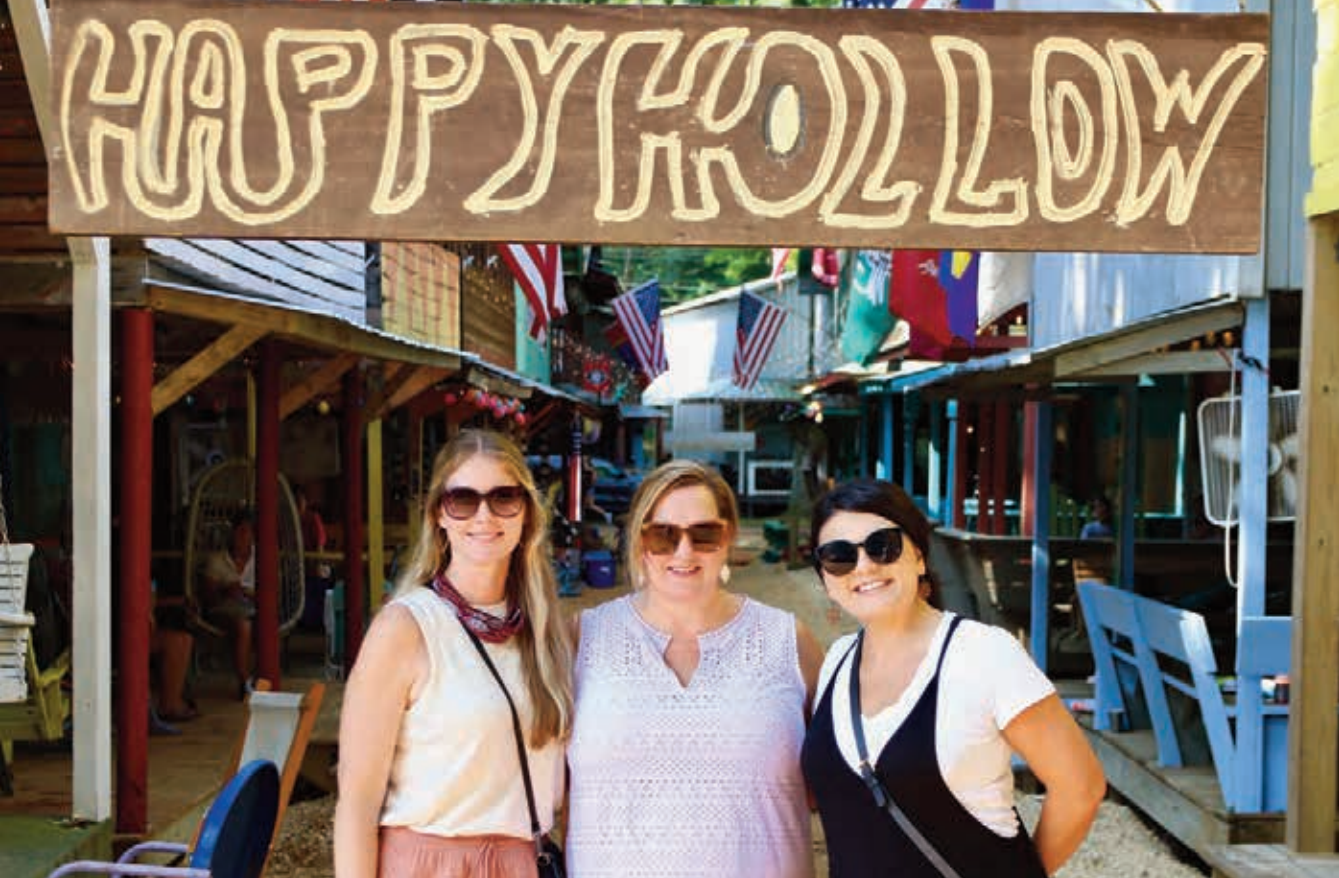
**PASTORS**

**SCOTT & KARI BOATNER**

**VISIT US AT**

**256 GUM ST PHILADELPHIA, MS**





Bevin Jones from Panama City Beach, Fla., Leigh Johnson from Selma, Ala., and Jessica Standley of Inlet Beach, Fla., spend time at Happy Hollow in Cabin 227.



Hamp Stribling of Philadelphia plays with his toy truck in the gravel of Cabin 77.



Maggie and Emma wish everyone a great Fair!

**WELCOME BACK!**

**WE WOULD LIKE TO WISH YOU ALL A SAFE AND HAPPY FAIR!**

**AMY K. TAYLOR**  
LAW FIRM

504 CHURCH AVENUE • PHILADELPHIA, MS  
601.656.7301

**B AND G**  
EQUIPMENT

LOGGING EQUIPMENT FULL SERVICE DEALER

10430 ROAD 383  
PHILADELPHIA  
(601) 656-7011  
[www.bandgequip.com](http://www.bandgequip.com)



# Full House cabin lives up to namesake

By John Lee



The Posey and Eubanks families pose with other family members and friends in front of the "Full House" Cabin 706. Pictured, from left: Ken Butler, Noah Eubanks, Alice Butler, Sadie Butler, Millie Butler, Kolt Butler, Avis Butler, Betty Ann Landers, Ted Landers, Margaret Posey, Ken Greene, Chelsea Pope, Aaron Rice, Jerry Barnes, Madison Eubanks, William Eubanks, Judy Barnes, Juliana Johnston, Stan Johnston, Laurie Johnston, Douglas Sanders, Macy Johnston, Jeannie Eubanks, Tony Pope, and Clay Eubanks.

my brother Ken Butler who brings racehorses every year from Texas," Eubanks said. "He's bringing a horse named Storm this year."

Eubanks said she also has a friend who visits the Fair from Florida each year.

"We usually have around 25 people staying in this cabin, but when everyone is here, it's closer to 30 of us," Eubanks said. "My grandfather built this cabin in 1979, and his brother built an identical cabin right next to it."

Eubanks said her grandfather was a big poker player, and that's where the cabin got its "Full House" nickname. They have a sign outside the cabin with a picture of playing cards to fit the name. The original owner, Eubanks' other grandmother, Judy Barnes, still stays there every year.

"We're looking forward to the horse races, Cake Walk, and everything else the Fair will offer," Eubanks said.

Jeannie Eubanks said the annual Cake Walk at the Pavillion is one of her favorite things to do at the Fair each year.

"I'm proud to say that I've won something from the Cake Walk almost every year," said Eubanks, who stays in the Barnes "Full House" Cabin 706.

Eubanks, who has been attending the Fair since she was born in 1974, said her grandmother, Millie Posey, also went to the Cake Walk every year, and that inspired her to start doing the Cake Walk.

"I plan to do the Cake Walk again this year and win something," Eubanks said. "I have a lot of fun memories with my grandmother doing that."

Eubanks said she has family members who come to the Fair each year, too, and they each have their favorite things to do at the Fair as well.

"Other members of my family come here from different parts of the state and from other states, too, like



**ALL AMERICAN  
-PAWN-**

**Quick Ca\$h & Amazing Deals!**

*Happy Fair Week!*



**380 W. Main St., Philadelphia, MS 39350  
601-656-7784**

**Welcome to our Fair City  
& The Neshoba County Fair!**

*Special Events!*

**UPCOMING SUMMER & FALL EVENTS**

July 14-17 ~ Choctaw Indian Fair

July 23-30 ~ Neshoba County Fair

October 16 ~ HAM JAM!

Arts & Crafts Festival



Community  
Development  
Partnership

*It's Fun for the  
whole Family!*

256 W. Beacon Street  
Philadelphia, MS

601-656-1000 • [www.neshoba.org](http://www.neshoba.org)





ANDREW DABBS, MD



# YOUR HEALTH IS OUR PRIORITY



Surgery Clinic of Philadelphia \ 601.663.1234  
1003 Holland Avenue \ Philadelphia, MS 39350

Neshoba County General Hospital – Nursing Home complies with applicable Federal civil rights laws and does not discriminate on the basis of race, color, national origin, age, disability, or sex. ATENCIÓN: si habla español, tiene a su disposición servicios gratuitos de asistencia lingüística. Llame al (601) 663-1200. CHÚ Ý: Nếu bạn nói Tiếng Việt, có các dịch vụ hỗ trợ ngôn ngữ miễn phí dành cho bạn. Gọi số (601) 663-1200.

*Dedicated to Excellence in Healthcare*

[www.neshobageneral.com](http://www.neshobageneral.com)



SHANNON KIRKLAND, FNP-C GRANT GUILD, MD



BOBBY H. SMITH, MD



# YOUR HEALTH IS OUR PRIORITY



JESSE STOKES, FNP-C



Neshoba Family Medicine \ 601.650.1991  
Neshoba Urgent Care \ 601.656.1465  
1120 E. Main Street \ Suite 1 and 2  
Philadelphia, MS 39350

Neshoba County General Hospital – Nursing Home complies with applicable Federal civil rights laws and does not discriminate on the basis of race, color, national origin, age, disability, or sex. ATENCIÓN: si habla español, tiene a su disposición servicios gratuitos de asistencia lingüística. Llame al (601) 663-1200. CHÚ Ý: Nếu bạn nói Tiếng Việt, có các dịch vụ hỗ trợ ngôn ngữ miễn phí dành cho bạn. Gọi số (601) 663-1200.

*Dedicated to Excellence in Healthcare*

[www.neshobageneral.com](http://www.neshobageneral.com)





Pastor Mack Alford of Mt. Carmel Baptist Church, Jennifer Walker, Emily Walker, Caroline Estes and Benton Estes relax in Cabin 2.

## NOW ACCEPTING NEW PATIENTS

CLEANINGS AND EXAMS,  
RESTORATIVE DENTISTRY,  
ORAL SURGERY, ROOT CANALS,  
BOTOX INJECTIONS,  
AND DERMAL FILLERS



PHILADELPHIA FAMILY DENTAL  
*Sarah B. Skinner, DMD.*







Ariel Wilbanks, Kelby Wilbanks, Matt Wilbanks and Mack Wilbanks take a family stroll through the Fairgrounds.



Joey Long, Beau Winstead Long and Krissy Long go for a stroll.

Thank you  
for a great  
first year!



**COLD WATER CAMP**  
PHILADELPHIA, MS  
EST. 2020  
[www.coldwatercampneshoba.com](http://www.coldwatercampneshoba.com)



**OPEN THRU SUMMER 2022**

  
MUSIC TELEVISION®  
**MTV TURNS FORTY**  
PRESENTED BY THE MALCOLM M. MALCOLM FOUNDATION





<b>NEW HOURS</b>	<b>CONTACT US</b>
MONDAY - WEDNESDAY: CLOSED	662.441.0100
THURSDAY: 10 AM - 5 PM	<a href="http://WWW.GRAMMYMUSEUMMS.ORG">WWW.GRAMMYMUSEUMMS.ORG</a>
FRIDAY: 10 AM - 5 PM	800 W SUNFLOWER RD.
SATURDAY: 10 AM - 5 PM	CLEVELAND, MS 38732
SUNDAY: 12 PM - 3 PM	



# Boiled peanuts are Marshall's go-to Fair food

**By Audrey Hall**

When Benjamin "Mr. Fair" Marshall thinks about the Fair, the sawdust comes to mind first.

His earliest memories go back to when the entire Fair was covered in the stuff, when all of the roads were made of it.

Marshall has been coming to the Fair for 61 years. He and his family make their home in Cabin 240, the Marshall Cabin, where they enjoy the horse races from the view of their porch swings.

Hanging out on the porch and catching up is part of the Marshall family tradition.

"I look forward to seeing my friends," said Marshall, a Philadelphia native whose childhood friends are now spread across the Southeast and Southwest. "We grew up on this corner."

The group is the most anticipated aspect of Marshall's Fair experience and he considers

"Fair family" a more accurate term for his childhood friends who now congregate every year at the Fair.

Whether in Arkansas or Madison County, they find time to come together at the Fair.

To celebrate, Marshall makes boiled peanuts every year for his Fair family.

"There's only one recipe," said Marshall, which he got from the so-called "Peanut woman," a Philadelphia cook who passed the recipe on to the Marshalls. The legendary salty recipe is memorable for all who visit.

Back when Marshall's father built the cabin, Marshall remembers how the land was once open field. He recalls when Fairgoers and locals kept their horses here.

The years of horses in open fields and sawdust have passed, at least for the Marshalls. Now, this row of cabins belongs to him and his Fair family.



Benjamin Marshall

**HEAD**  
AUCTIONS & REALTY

**HAROLD T'S  
TRADING POST  
EXCESS INVENTORY  
LIQUIDATION**



**Starts: Fri, Aug 13  
Ends: Mon, Aug 23**  
For more information and  
to register to bid visit  
[HeadAuctions.com](http://HeadAuctions.com)

This collection will be sold  
**ONLINE ONLY.** Contents include  
but are not limited to guitars,  
vinyl records, music memorabilia,  
furniture, glassware, home decor  
and more!  
First of multiple auctions.



William Lindsey Head 601-259-4466 MS Auction License 892

**Mitchell  
Bros. & Sons**

**2021 FAIR  
SPECIAL**

**THURSDAY & FRIDAY - 5-11PM**  
**SATURDAY - LAST FRIDAY**  
**12PM - 11PM**

**Slidell, LA • 601-656-8480**



# Bounds family spends time cooking, visiting

**By John Lee**

Suzan and Mark H. Bounds of the Woodrow Stephens Cabin 260 enjoy cooking Boston butt, gumbo, homemade cakes and other tasty treats each year at the Fair.

Suzan Bounds said she attended her first Fair was when she was just two weeks old when her parents, Woodrow and Bertha Stephens of Wiggins, brought her to the Fair.

“My father was involved in politics,” said Suzan Bounds whose parents were Neshoba County natives. She grew up in Wiggins where her father had a lumber company.

“He loved to take his summer vacation here and help campaign for governors and senators,” Bounds said. “Thanks to him, we’d sometimes have a couple of hundred people here eating some nights due to his campaigns.”

Bounds said her father would pick a candidate and campaign for them. He campaigned for politicians including James Eastland, John Stennis, Paul B. Johnson and Ross Barnett. She said he always had a good time with his candidates and some even spent the night at the cabin while they were in office.

“I remember someone asking, ‘Did I see James Eastland come into your cabin?’” Bounds said. “I told them that yes they did, and they were not seeing things.”

Bounds said her favorite thing to do at the Fair is to visit with friends and family from Philadelphia who still live in the area. She said this year she will be hosting her friend Roxie Hutton, also from Wiggins, who has never been to the Fair.

“Roxie has been hearing about the Fair for the past 30 years, and she will finally be coming to experience it,” Bounds said.

Bounds parents built the Woodrow Stephens Cabin in 1960. They originally wanted the Collins Cabin, near the fair entrance that was built in 1954, but her father was unsuccessful in acquiring it. He decided to build the Woodrow Stephens Cabin from the lumber he had from his business.

“We’ve had as many as 25 people spend the night here before,” Bounds said. “That was just friends and family. It’s a little quieter this year.”

Bounds’ husband, Mark H. Bounds, said he enjoys sitting and watching people go about their day.

“I also love the horse races, the music, the food, everything,” he said. “Everyone here should have a good time. Eat, drink and be merry. We will be cooking gumbo and Boston butts, potato salad, baked beans, bread, salad and sweets like homemade cakes on Saturday.”



Suzan and Mark H. Bounds

# Welcome back home!



**Home: the place where you hang your 2021 commemorative apron and enjoy The Fair with friends and family!**

**Welcome back, y'all!  
May this be the best year yet!**



The Citizens Bank SM

**Proudly serving:**

Attala, Forrest, Harrison, Jackson, Lafayette, Lamar, Lauderdale, Leake, Kemper, Madison, Neshoba, Newton, Oktibbeha, Rankin, Scott and Winston counties.





Mary Lassen Weeks of Mandeville, La., eats breakfast at Cabin 14. She is a 5th generation Fair attendee.



Lemar Williams of Union takes a break from shopping with the family.



THE 2021 NESHOPA COUNTY FAIR

*Enjoy the Fair!*

*The Clothesline*

208 N. BYRD AVE. • PHILADELPHIA • 601-389-0440

FAIR HOURS: T, W, & F; 10:00AM-5:30PM • SAT.: 10:00AM-4:00PM • CLOSED MON. & THU.







Carolyn Palmer, Laura Bailey, Elizabeth McNeece, Brant McNeece and baby Wade McNeece represent four generations at Cabin 34.



Cousins Mason Rushing and Asher Ingram enjoy the porch swing for Asher's first Fair!



If you like the smell of sawdust, cotton candy, lemonade and visiting with friends you are probably a Neshoba County Fair goer like us!

**Quality Hospice Care, Inc.**

*"Committed to Comprehensive Health Care"*

*"Serving Central Mississippi"*

317 RANGE AVENUE • PHILADELPHIA, MS • 601.656.5252



#thetearoombeautybar  
**THE TEA ROOM**

*Love, Stephanie, Maddy, Meg, Anna & Kendall*





JP Burke and Stanley Salter catch up.



Cordell Jackson, Will Garner, Kalli Spears and Camryn Crawford enjoy the rides at the Midway.



River Weems and Baylor Sharp play at their cabin.



Cousins Asher Moak and Mollie Claire Todd celebrate their first Fair together.





Eden Leigh Pope, 9, and Mabry Ann McBride, 2, cruise at the Midway.





# WE SWING FOR THE FENCES EVERY DAY

It's a phrase on the minds of Mississippi State fans everywhere since our Bulldogs won college baseball's coveted **National Championship** in June. Fact is, though, swinging for the fences is something we do every day as part of our drive to change the world.

## COME CELEBRATE WITH US THIS WEEK

**WEDNESDAY, JULY 28, 10-11:15 A.M.**

MSU-Meridian tent on the Square  
Enjoy giveaways and learn about our new  
Physician Assistant Program

**WEDNESDAY, JULY 28, 11:15 A.M.**

Meridian Day Program in the Pavilion  
Wear maroon or your national championship shirt

**THURSDAY, JULY 29, 2 P.M.**

"Football at the Fair" in the Pavillion featuring  
MSU Head Coach Mike Leach

**WE RING TRUE™**



**MISSISSIPPI STATE**  
UNIVERSITY™

**MSSTATE.EDU**



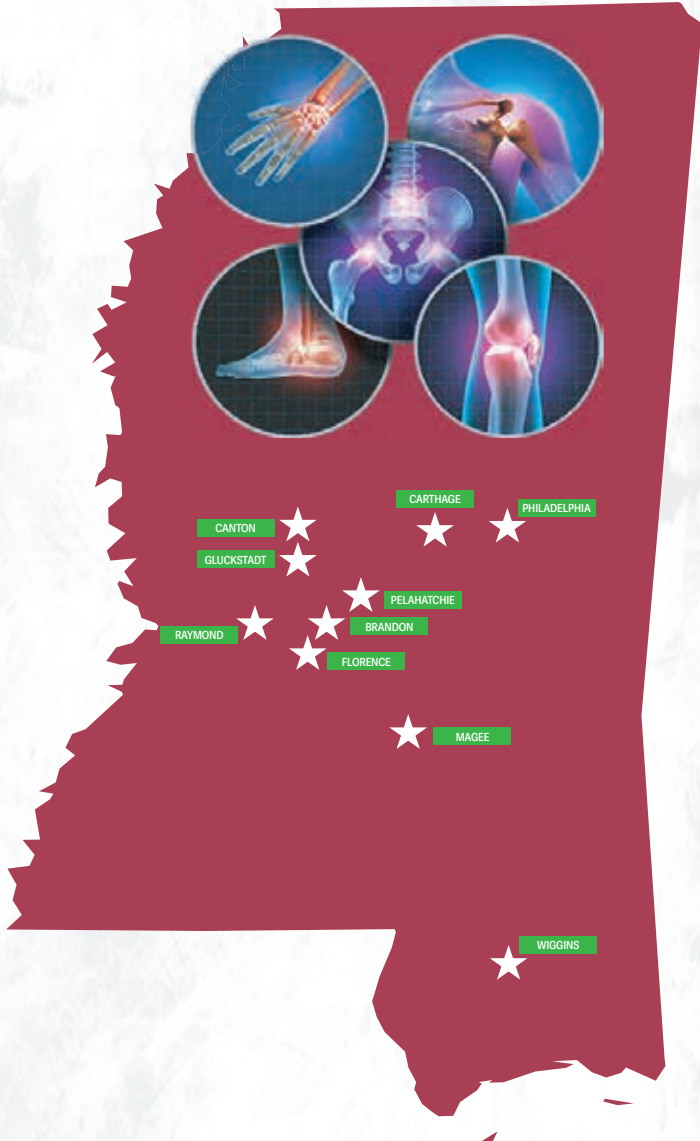
# The road to recovery starts with Performance Therapy.

**START LIVING YOUR LIFE TO THE FULLEST POTENTIAL. FEEL BETTER-FAST. PERSONALIZED CARE. COMPREHENSIVE CARE. HANDS-ON-TREATMENT. PROVEN RESULTS.**

When you're in pain, nothing seems right. You miss out on your favorite activities. You may miss work and be unable to earn a living or provide for your family. At Performance Therapy in central Mississippi, we offer hands-on methods to relieve your pain and improve your function and mobility as quickly as possible.

Whether you are nursing a sports injury, suffering from chronic back or neck pain, healing from orthopedic surgery, or recovering from a stroke, you want a rehabilitation practice that gives you the time and attention you deserve.

At Performance Therapy, we're focused on your recovery. Our physical, occupational, and speech therapists help people from all walks of life regain their physical function and mobility. Whether you're recovering from a sports injury, stroke, or orthopedic surgery, or you're suffering from chronic neck or back pain, you'll want to visit the rehabilitation specialists who give you the time and personalized attention you deserve. We've been serving patients like you in central Mississippi since 2004.



## 10 Convenient Locations across Central Mississippi:

- |   |   |   |   |  |
|---|---|---|---|--|
| <b>BRANDON</b><br>1301 W. Government St.<br>Suite 104<br>(601) 591-7540 | <b>CANTON</b><br>1883 Highway 43 South<br>Suite C<br>(601) 667-3144 | <b>CARTHAGE</b><br>1081 Highway 16 W<br>(601) 267-3241        | <b>FLORENCE</b><br>2990 Highway 49 S<br>Suite A<br>(601) 891-8179 | <b>GLUCKSTADT</b><br>464 Church Road<br>Suite 400<br>(601) 707-5943            |
| <b>MAGEE</b><br>720 3rd Street SW<br>(601) 439-7042                     | <b>PELAHATCHIE</b><br>201 S. Brooks Avenue<br>(601) 759-5006        | <b>PHILADELPHIA</b><br>921 W. Beacon Street<br>(601) 650-0002 | <b>RAYMOND</b><br>13010 Highway 18<br>(601) 857-2229              | <b>WIGGINS</b><br>BATSON PHYSICAL THERAPY<br>711 Hall Street<br>(601) 928-6110 |

**SPECIALIZING IN: PEDIATRICS | AQUA THERAPY | PELVIC FLOOR THERAPY | DRY NEEDLING THERAPY | SPORTS INJURIES | CHRONIC BACK PAIN | SURGICAL RECOVERY | STROKE RECOVERY | SPEECH THERAPY | OCCUPATIONAL THERAPY | PHYSICAL THERAPY | WORK CONDITIONING | WORK HARDENING | FCE**

**Call Performance Therapy at (601) 650-0002 to schedule your appointment at one of our Central Mississippi locations, or you can request one online at [www.performancetherapy.info](http://www.performancetherapy.info).**

**PerformanceTherapy**  
Comprehensive Care • Hands-on Treatment • Proven Results



# Color the Fair



Pepper Weprin, 5, Cabin 81



# Atkinsons excited to be 'home' at Cabin 312



Donnie Atkinson and his wife Susan Atkinson

**By Sarah Watkins**

Cabin 312 owner Donnie Atkinson is happy that his rebuilt cabin doesn't shake when he walks the way it did before it was rebuilt four years ago.

"Every time I used to walk up the stairs, the old cabin's foundation would start shaking," Atkinson said. "I am just happy it doesn't shake anymore."

Atkinson, a retired school teacher from Neshoba Central, refers to Cabin 312 as his house.

Cabin 312 is located near the Racetrack, and he and his wife, Susan Singleton Atkinson, consider the Fairgrounds their slice of Heaven.

Donnie Atkinson's father, the late Charles Atkinson, bought Cabin 312 in 1967 when only three or four cabins were located along the Racetrack.

"My daddy bought the cabin for \$1,500," said Donnie Atkinson, who was in the seventh or eighth grade when his father purchased Cabin 312 and painted it maroon and white in tribute to his favorite football team the Mississippi State University Bulldogs.

"He wanted to be on his own and have a place," Donnie Atkinson said.

The cabin was always full of family and friends, Donnie Atkinson recalled.

"The cabin didn't even have enough room to turn around in on a Saturday night," Donnie Atkinson said.

Now Cabin 312 is not only "home" to Donnie and his wife, but it is also "home" to the Atkinsons' daughter, Pamela Atkinson Nowell, and her husband, Nicky Nowell, plus their two children William and Benjamin Nowell.

When renovating the cabin four years ago, Donnie Atkinson said he wanted his family to be connected and together in all ways possible, so the upstairs is one big open room with beds.

Another reason the Atkinsons decided to rebuild their cabin was due to the cabin only having one bathroom.

"Well, we had a stairway on the front porch, and during the night, if you had to go to the bathroom, you had to come out on the porch and come in the house to use the bathroom," Donnie Atkinson said.

Gone now is the old maroon-and-white paint scheme replaced by Donnie Atkinson's favorite color yellow and his daughter Pamela's favorite color aqua.

Donnie and Susan Atkinson said some of their favorite Fair traditions are taking their grandchildren to the Midway, having a fish fry and cooking gumbo.

"The men cook during the week of the Fair, but one night I always make sure to make a gumbo," Susan Atkinson said.



**B&G TRANSPORT, LLC**

1300 WEYERHAUSER ST.  
PHILADELPHIA, MS 39350  
P.O. DRAWER 647  
OFFICE: 601.656.1262  
FAX: 601.656.0006

**B & G WOOD, INC.**

*"We Buy & Sell Timber"*

Donald Grantham, President  
M(601) 416-6019 • Email: donaldgrantham1@gmail.com  
Office: 601-656-1262 • Fax: 601-656-0006  
1300 Weyerhaeuser St. • Philadelphia, MS 39350



**NESHOBA GENERAL WILL BE OFFERING FREE VACCINATIONS AT THE NESHOBA COUNTY FAIR**

Neshoba General Team Members will be offering the COVID-19 Vaccine during the week of the Neshoba County Fair.

You may get your vaccine at the First Aid Center located behind the grandstand.

**Vaccines offered daily from 10:00AM - 10:00PM**

DEDICATED TO  
**EXCELLENCE**  
IN HEALTHCARE

N

NESHOBA  
GENERAL

1001 HOLLAND AVENUE • PHILADELPHIA, MS • 601.663.1200 • WWW.NESHOBAGENERAL.COM

Neshoba County General Hospital - Nursing Home complies with applicable Federal civil rights laws and does not discriminate on the basis of race, color, national origin, age, disability, or sex. / ATENCIÓN: si habla español, tiene a su disposición servicios gratuitos de asistencia lingüística. Llame al (601) 663-1200. / CHÚ Ý: Nếu bạn nói Tiếng Việt có dịch vụ hỗ trợ ngôn ngữ miễn phí dành cho bạn. Gọi số (601) 663-1200.





As YOUR Commissioner of Agriculture and Commerce, I welcome you back to the Neshoba County Fair. The traditions here, the family time, the entertainment and fun have all grown from the roots of an agricultural event, much like the economy of Mississippi. I'm working for you to keep Mississippi's agriculture growing, our trade moving, and the supply lines flowing so we all have safe, healthy, affordable and abundant food. I'm putting conservative government to work for you.

*- Andy Gipson*


Commissioner of Agriculture and Commerce  
Small Farmer Raising Timber, Cattle,  
Chickens and Blueberries  
Pro-Life Legislator of the Year 2014  
Endorsed by NRA & Recipient of the  
2013 NRA Defender of Freedom Award

Ordained Baptist Minister  
Southern U.S. Trade Association  
President  
Husband to Leslie; Father of Joseph,  
Benjamin, Abigail and Sarah

[andygipson.com](http://andygipson.com)

 [CommissionerAndyGipson](https://www.facebook.com/CommissionerAndyGipson)

 [@CommAndyGipson](https://twitter.com/CommAndyGipson)

 [CommAndyGipson](https://www.instagram.com/CommAndyGipson)

**Andy**  
**Gipson**

*Agriculture Commissioner*

Paid for by Friends of Andy Gipson





Allie Wall, Dot Gamblin and Colbie Gamblin soak in the Fair.



Jack Breeze and Bryan Breeze play "Rocks" on the front porch.



Paid for by Friends of Delbert Hosemann

*It's great  
to be  
back at the  
Neshoba  
County Fair!*



**DELBERT**  
LT. GOVERNOR





ANDREW DABBS, MD



# YOUR HEALTH IS OUR PRIORITY



Surgery Clinic of Philadelphia \ 601.663.1234  
1003 Holland Avenue \ Philadelphia, MS 39350

Neshoba County General Hospital – Nursing Home complies with applicable Federal civil rights laws and does not discriminate on the basis of race, color, national origin, age, disability, or sex. ATENCIÓN: si habla español, tiene a su disposición servicios gratuitos de asistencia lingüística. Llame al (601) 663-1200. CHÚ Ý: Nếu bạn nói Tiếng Việt, có các dịch vụ hỗ trợ ngôn ngữ miễn phí dành cho bạn. Gọi số (601) 663-1200.

*Dedicated to Excellence in Healthcare*

[www.neshobageneral.com](http://www.neshobageneral.com)



SHANNON KIRKLAND, FNP-C  
GRANT GUILD, MD



BOBBY H. SMITH, MD



# YOUR HEALTH IS OUR PRIORITY



JESSE STOKES, FNP-C



Neshoba Family Medicine \ 601.650.1991  
Neshoba Urgent Care \ 601.656.1465  
1120 E. Main Street \ Suite 1 and 2  
Philadelphia, MS 39350

Neshoba County General Hospital – Nursing Home complies with applicable Federal civil rights laws and does not discriminate on the basis of race, color, national origin, age, disability, or sex. ATENCIÓN: si habla español, tiene a su disposición servicios gratuitos de asistencia lingüística. Llame al (601) 663-1200. CHÚ Ý: Nếu bạn nói Tiếng Việt, có các dịch vụ hỗ trợ ngôn ngữ miễn phí dành cho bạn. Gọi số (601) 663-1200.

*Dedicated to Excellence in Healthcare*

[www.neshobageneral.com](http://www.neshobageneral.com)





Rhonda Perdue, Tim Perdue and Sandy Taylor have been coming to the Fair for over 50 years. They live in Louisiana and Georgia.



Lucy McGee, 5, and Lee McGee return from shopping at the Flea Market.



**Need a break from the Fair?**

**Weekly or Day Passes Available.**

Raquetball courts, steam rooms, 4 weight rooms, smoothie bar and more!



113 LAKESIDE DR.  
PHILADELPHIA  
**601-650-0075**  
philadelphiaathleticclub.net



May God bless you and your family during the Fair.



150 HOSPITAL ROAD • PHILADELPHIA, MS  
601.656.4343 • PRINCEOIL.COM





Brothers Asher and Morgan Ingram share their very first Fair at Cabin 750 with mom, Mackenzie Ingram.



Jason and Jordan Rives enjoy a Farmer's Market watermelon on the porch of their cabin.

BUY A FOOTLONG GET ONE  
**50% OFF**



Order online with code  
**BOG050**

**SUBWAY**

595 EAST MAIN ST. - 601-656-6046  
1006 CENTRAL DR. - 601-389-0020  
INSIDE WALMART - 601-656-5200

*Welcome back to the  
Neshoba County Fair!*



 **Weyerhaeuser**  
[www.eyerhaeuser.com/careers](http://www.eyerhaeuser.com/careers)





Above, Gracie Dees, Atley Boulden and Tiffany Jones sport colorful boots as they trek through the Fairgrounds. At right, Madelyn Jude Hardy, 4, cools off in front of the big fan at Cabin 950.



Bear Schrickel, Ella James Stokes and Blake Chipley enjoy playing with bubbles on the porch at Cabin 351.



Rivers Pope, Emma Jackson, Rhett Pope and Lexi Pope enjoy the rodeo.



Above, Leighton Davison and Ruby Culpepper have fun at the petting zoo. At left, Emma Katherine Jackson and Kaden Sims help put youth food preservation jars on the shelves in the exhibit hall.





**SINCE 1889,**  
**THE NESHOPA COUNTY FAIR HAS BUILT A**

# **LEGACY**

*of leadership and fellowship.*

As Mississippi's flagship university dedicated to the success and advancement of this state, we're proud to recognize Mississippi's Giant House Party.

*Ole Miss*





# Kelly looks forward to time with family

**By Steve Swogetinsky**

Good food. Good fellowship. Good times.

That is what brings Keith Kelly and his family back to the same spot in the Fair campgrounds every year.

Kelly, who lives in Edinburg, has been coming to the Neshoba County Fair most of his life. The family started staying at campsite 349 near the first gate in 1992. Over the years, they have gotten to know their neighbors and he wouldn't miss the chance to spend a couple of weeks at this time every year.

"We like this general area here," Kelly said. "Coming here is like a family reunion this time of year."

"My parents got the camper spot next to me in 1992. My sister, Linda Pickett, is on it now and I have the one next to her. They bring the kids and grandkids and we have a good time. It's like a family reunion."

Kelly moves into the Fairgrounds the week before the Fair each year. He looks forward to the start of the Fair when all of the events and activities start up.

"I like going down to the horse races and the different events that are held at Founder's Square," Kelly said. "Mainly, this is the only time of the year we get together. I always look forward to it. There are a lot of good people here."

Kelly is retired after working 24 years at Walmart in Carthage. He likes to sit out and watch the people come and go. And he loves the good food his family cooks up every night.

"One night, someone cooks gumbo and that's my favorite," Kelly said. "We cook steaks and ribs and smoke different types of meat. We eat together every night. We share. Every night is a good night. I guess the biggest day usually is Sunday of the Fair."

"I'm single and I am the only one in my camper," Kelly said. "My sister's kids have friends come out and spend a night or two."

"I really enjoy it. We have a lot of good people here."



Keith Kelly enjoys sitting back, visiting friends and family at the Fair.

**The Fair is Back!**

**WE WELCOME YOU TO THE  
2021 NESHOPA COUNTY FAIR!**

**TOLBERT**  
CHEVROLET/BUICK

1040 W BEACON ST • PHILADELPHIA, MS 39350 • (601) 656-4802

*"Daydreamin' about  
the Fair!"*

**WESTSIDE  
BODY SHOP**

COMPLETE COLLISION  
REPAIR & TRUCK ACCESSORIES

CHRIS JONES, OWNER  
20 WATER VIEW LANE • 601-656-9461





# ANDERSON

*Family Medical Center - Airpark*

A Division of Anderson Regional Medical Center - South

Dr. Michael Shrock, Dr. Samantha Mosby and Hannah Johnson, FNP-C, take pride in providing quality medical care for you, your family and your business.

- Pediatric to Geriatric Care
- In-house Lab & X-ray Services
- Drug Screens
- Preventative Healthcare
- Worker's Compensation Exams
- Physicals (Pre-employment, DOT & Sports)

**Monday - Friday**  
**8 a.m. to 4:30 p.m.**  
*Walk-ins are welcome!*

**IF YOU NEED  
CARE DURING  
THE FAIR,  
WE'RE HERE!**



1056 Holland Avenue • Philadelphia, MS • 601.656.8545



**BullockAutoWorld.com**



**CARS • TRUCKS • SERVICE  
BRAKES • OIL CHANGE • TIRES**

**We STILL  
Strive to Amaze You!**





Cousins Belle Adair Lindberg, 3, from Atlanta, and Austyn Kate Tawater, 3, from West Point, enjoy water courtesy of the CDP and ice cold Lindsey's Lemonade before heading back to Cabin 302 in Beverly Hills.



Scarlett Moody, 3, and her dog Sky walk around the Fairgrounds.

## Personal Care for Your Loved One



Atwood Personal Care Home started in our hometown of Kosciusko, MS in 1993. In 2016, we opened a 30 bed home in Kosciusko and have continued to grow and expand. In 2009, we opened a 32 bed home in our nearby fair city of Philadelphia, MS. Our homes are owned and operated by Mark and Debra Atwood, RN from Kosciusko, MS.

Although our homes offer different amenities, they all offer exceptional care to you and your loved ones. We provide a clean and homey environment to qualified residents while striving to meet their physical and emotional needs at a reasonable cost. Come see why Atwood's is the next best place to your own home.

Atwood Personal Care Home is a private pay facility. Long term care policies as well as veterans benefits can help cover monthly costs. Veterans OR their widows may be approved for VA benefits that can help cover HALF of our monthly cost, be sure to visit our website for more information on VA benefits and if your loved one qualifies!

**AMMENITIES:** Private rooms | 3 home-style meals per day | Laundry and Housekeeping  
 Scheduled daily activities | 24-7 care by qualified staff | Assistance with daily living tasks  
 Medication assistance Individual emergency call system for each resident | Outdoor walking track  
 Both homes are managed by nurses and on call 24-7!



**ATWOOD**  
PERSONAL CARE HOME

PHILADELPHIA: 101 PILOT ST. • 601-656-7394 | KOSCIUSKO: 328 GOODMAN ST. • 662-289-2547



# COWBOY CHURCH AT THE NESHOPA COUNTY FAIR

JULY 25, 2021 • 9:30AM • IN THE SHOWBARN

With Chaplin Edward Smith, leading Jockey David Alvarez, and testimonies from local people. Prayer for all trainers and jockeys. And much more!

*Prophetic artwork by Amy Rylander.*



Chaplain, Edward Smith



Jockey, David Alvarez

**Bring lawn chairs!**



**Bring lawn chairs!**

## GLOBAL VISION FAITH CHURCH

1006 EAST MAIN STREET • PHILADELPHIA, MS 39350 • (601) 389-7757 • [GLOBALVISIONFC.COM](http://GLOBALVISIONFC.COM)





“...there isn’t anything like this, any place on Earth.”

- Ronald Reagan

*Cherishing our old Fair memories while making new ones!*



**NANCE'S**  
NORTHSIDE SHORTSTOP  
CONVENIENCE STORE

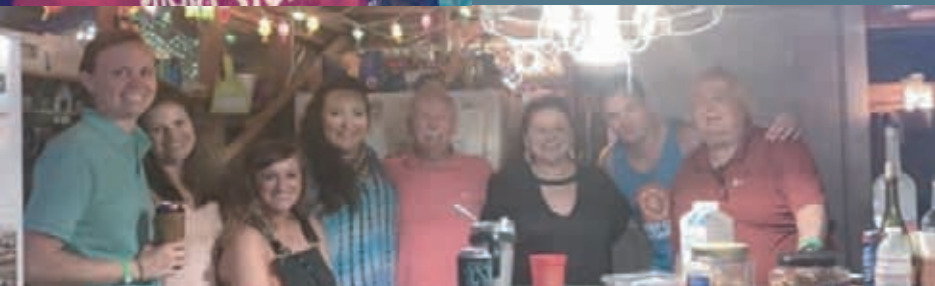
12070 Pecan Ave  
Philadelphia  
601-656-6088

~Locally Owned & Operated~

**FAIR CITY**  
LIQUOR

12060 Pecan Ave, Philadelphia  
601-568-5035

Open Monday thru Saturday, 10 am - 10 pm





## FLEA MARKET FUN



Ella James Stokes, Willow Stokes, Lundyn Stokes and Emma Leighton Hazelwood enjoy the Flea Market!



# Peppermint ice cream is a Wells staple

**By Steve Swogetinsky**

While they enjoy the different events held at the Fair, Jennifer and Houston Wells said it is their fellowship with friends and family that brings them back to their regular campground slot each year.

"I was born in Carthage," Jennifer said. "Both sides of my family were from the Carthage area and the Neshoba County area. I have a long history of loving it here and spending a lot of time here.

"My favorite thing is the fellowship. The people, it's like reunion up here. I love it. The food is fantastic. My specialty is peppermint ice cream. That is a tradition with us. We will make several freezers of that this week. We try to make several different kinds."

The Wells live in Rankin County in the Sand Hill community. Houston is originally from Greenville and did not grow up going to the Fair. But now he likes it.

"I started coming with my wife," Houston said. "She has a lot of family. We have been coming for a

while. I enjoy coming to see the people."

Wells worked in the field of environmental cleanup and protection.

"I graduated from Mississippi State with a degree in agronomy soil management," Wells said. "I am a soil chemist and have a background in agricultural chemicals. When I was at Mississippi State, I worked in the Extension Service in toxicology.

"I did environmental cleanups and Phase One assessments. I worked for all kinds of people – Boeing Aircraft and others. Also, I did conservation for the Sierra Club. I worked on a lot of clean water issues and I lobbied a lot."

Wells said he missed coming to the Fair last year but not for the reason you might think.

"You know where I was?" Wells said. "I had triple bypass heart surgery. I wouldn't have made it anyway."

Jennifer said she loves family time at the Fair.

"We have between 20 and 25 come through," Jennifer said. "We have two grown kids and they have grown kids. They live in the Madi-

son and Canton area. Some have friends and stay in the cabins. Some of them stay here with us. They have to squeeze in when they come up here. It is never a dull moment.

"We have six grandchildren. We lost one granddaughter a couple of years ago and she loved the Fair. Her name was Abbie O'Cain, and we first brought her to the Fair when she was 2 years old. She passed away when she was 12. She loved going to the racetrack and playing with her friends. And she loved helping cook, too. I still have a painting she did in 2017. It had her name on it and said, 'Best Fair Ever.' You get through it; you never get over it."

She likes introducing her grandchildren to different things in Neshoba County.

"I have been going to the Williams Brothers for many years, buying everything from ice cream to bailing twine," Jennifer said. "I took my granddaughter in their Friday afternoon to the shoe store. She didn't find what she wanted but they helped her order it online."



Dave Scott, Jennifer Wells and Houston Wells



## Celebrate every day of the Neshoba County Fair!

Let Dr. Craig Martin and his Staff help you look and feel better.

GIFT CERTIFICATES AVAILABLE.  
CONTACT US FOR A CONSULTATION

### DR. CRAIG MARTIN

GENERAL DENTISTRY AND FACIAL AESTHETICS

1001 EAST MAIN STREET, PHILADELPHIA, MS • 601.656.3366





# Join us for an ECCC Reunion!

Monday, July 26 · 1 p.m.  
Founders Square Pavilion

Visit with ECCC Alumni, Friends & Staff · Free Popsicles · Door Prizes



Don't miss the  
Collegians rock-n-roll band!  
Performances by the  
Centralettes & Cheerleaders!

**REGISTRATION NOW OPEN**  
*Fall Semester Classes*  
*Begin August 16*



*Programs Available in University Transfer,  
Career & Technical, & Healthcare Education*

For more information,  
email [go2ec@ecc.edu](mailto:go2ec@ecc.edu)  
or scan the QR code



## EAST CENTRAL

COMMUNITY COLLEGE

Decatur, MS 39327 • 877-GO-2-ECCC • [www.eccc.edu](http://www.eccc.edu)

*East Central Community College is an equal educational and employment opportunity provider.*



Gentry Lynn Holley, 4, had so much fun at the rodeo this year.



# Meet your Fair neighbor

Cabin #353

- **Where are y'all from?** We were both born and raised in Neshoba County.
- **What is your favorite ride on the Midway?** The Sizzler.
- **What is your favorite Fair meal?** Chicken on the stick and funnel cakes!
- **What's one thing you especially look forward to at the Fair?** The concerts and the horse races.
- **How many people stay in your cabin during the week?** Only 4.

– By Natalie Breazeale and Riley Goforth



Natalie Breazeale and Riley Goforth



The Neshoba County Fair has been a tradition & destination for making memories since 1889.  
***Enjoy your time at the fair!***

**FIRST FINANCIAL BANK**  **In the Business of YOU.**

510 Hwy 35 South • Carthage, MS 39051 | (601) 267-6657 | [www.ffb1.com](http://www.ffb1.com) | Member FDIC





Baylor Byrd is loving all the animals in the petting zoo!

Courtney Hancock, Caroline Hancock, Aubree Russum, Katie Russum and Kathy Hancock rock matching shirts over the weekend.



**JASON MARTIN**  
REALTOR®  
601.575.5744  
jasonm@gohillphilly.com



**DERIC HORNE**  
REALTOR®  
601.416.7968  
deric@gohillphilly.com



**PAMELA BELK LOVERN**  
REALTOR®  
601.720.3405  
pamelabelklovern@gmail.com



**JASON LOVERN**  
REALTOR®  
601.416.1013  
jasonlovern15@gmail.com



**DALE GERNANY**  
REALTOR®  
601.934.6146  
dale@gohillphilly.com



**MATTHEW SMITH**  
REALTOR®  
601.692.5484  
matthew@gohillphilly.com

VIEW ALL AREA MLS LISTINGS AT [WWW.GOHILLPHILLY.COM](http://WWW.GOHILLPHILLY.COM)

# READY TO SELL?

HISTORIC LOW INVENTORY.

## Call us Today!

*Pre-approved buyers are looking for houses!*



RESIDENTIAL • COMMERCIAL • LOTS & ACREAGE • PROPERTY MANAGEMENT  
325 BYRD AVENUE • PHILADELPHIA, MS • 601-389-0003 • [GOHILLPHILLY.COM](http://GOHILLPHILLY.COM)





*InTouch provides complete care for the whole family. Providing medical and mental health medication treatment and counseling. We have Family Nurse Practitioners and Psychiatric Nurse Practitioners to treat medical and mental health concerns. Children and adults.*

*Call us for an appointment Today!*

**MERIDIAN • PHILADELPHIA • NEWTON • ACKERMAN**



**InTouch Health  
& Psychological Services**

1120 E. MAIN ST. • STE. 24 • PHILADELPHIA, MS 39350 • 601-781-8677 • [intouchheal.com](http://intouchheal.com)





Phillips Hines and Avie Phillips wait on breakfast at the Phillips cabin.

Laila Fulcher, 11, Cabin 618



Jewelry Just 4 Fun

440 EAST BEACON ST. PHILADELPHIA, MS

601.656.8928





Todd Smith and Bobby Wilson hydrate on the porch at Cabin 42, called "Smith Cabin."



**McLAIN SERVICES**

**601-656-6333**

***Welcome back to the Neshoba County Fair!***

**107 Magnolia Street, Philadelphia, MS 39350**

**For All Your Air Conditioning and Plumbing Needs!**



# Spice it up with Tex-Mex meals

## Cabin Cuisine

### BEEF FAJITAS

This yummy steak filling is sure to tingle your taste buds. It's easy to make ahead and when ready, it cooks quickly for a filling meal. Optional: serve with shredded lettuce or any condiments of your choice.

Prep Time: 15 mins

Cook: 15 mins

Total: 4 hours 30 mins

Servings: 4

¼ cup olive oil

1 lime, juiced

3 tablespoons chopped fresh cilantro

2 tablespoons finely chopped onion

3 cloves garlic, finely chopped

1 ½ teaspoons ground cumin

1 teaspoon salt

1 teaspoon black pepper

2 (8 ounce) boneless New York strip steaks, cut into thin pieces

8 (6 inch) white corn tortillas, or more as needed

1 (8 ounce) jar salsa

1 (8 ounce) package shredded Mexican cheese blend

Whisk olive oil, lime juice, cilantro, onion, garlic, cumin, salt, and black pepper in a bowl, and pour into a resealable plastic bag. Add steaks strips, coat with the marinade in the refrigerator for 4 hours to overnight. Heat a large skillet over medium heat; cook and stir beef in hot skillet until all liquid is absorbed, 15 to 20 minutes. Serve cooked beef with tortillas, salsa, and Mexican cheese blend.

### FRESH SALSA

Prep Time: 45 mins

Total Time: 45 mins

Servings: 36

6 roma tomatoes, diced

3 fresh jalapeno peppers, seeded and chopped

¼ red onion, chopped

3 green onions, chopped

2 cloves garlic, crushed

2 tablespoon chopped fresh cilantro

2 tablespoons fresh lime juice

2 tablespoons fresh lemon juice



1 ½ teaspoons ground cumin  
1 small jicama, peeled and chopped

1 (10 ounce) can diced tomatoes with green chilies, drained

Salt and ground black pepper to taste

Mix together the tomato, jalapeno pepper, red onion, green onion, garlic, cilantro, lime juice, lemon juice, cumin, jicama, and the diced tomatoes with chilies in a bowl. Season with salt and pepper. Allow to sit at least 1 hour before serving.

### SHRIMP TACOS WITH CILANTRO-LIME CREMA

Fresh and quick shrimp tacos that

are perfect for any day!

Prep Time: 45 mins

Cook Time: 30 mins

Total Time: 1 hr 15 mins

Servings: 20

2 pounds large frozen peeled and deveined shrimp, thawed

1 ½ teaspoons chili powder

1 teaspoon chili powder

1 teaspoon freshly minced garlic

½ teaspoon paprika

½ teaspoon ground cumin

½ teaspoon onion powder

½ teaspoon salt

½ teaspoon ground black pepper

¼ teaspoon ground coriander

¼ teaspoon grated Valencia orange zest

2 tablespoon olive oil, or more as needed

2 tablespoon sour cream

1 lime, zested and juiced

1 teaspoon chopped fresh cilantro

¼ teaspoon garlic powder

1 pinch salt and ground black pepper

20 (6 inch) corn tortillas

2 avocados, thinly sliced, or to taste

Rinse defrosted shrimp under cold water, drain, and pat dry. Combine shrimp, chili powder, garlic, paprika, cumin, onion powder, ½ teaspoon salt, ½ teaspoon black pepper, coriander, and orange zest in a bowl. Mix well. Heat olive oil in nonstick frying pan over medium-high heat. Add shrimp and cook until bright pink on the outside and the

meat is opaque, 4 to 5 minutes on each side, depending on the size of the shrimp. While shrimp cooks, prepare crema by whisking together sour cream, zest and juice of 1 lime, 1 teaspoon cilantro, garlic powder, and 1 pinch each of salt and black pepper. Heat corn tortillas in either a pan or on a griddle over low heat, 1 to 2 minutes per side. Be careful not to let them burn. Set aside. Assemble tacos by spreading 1 teaspoon crema across each tortilla, adding 3 or 4 shrimp, 2 slices of avocado, a sprinkle of fresh red onion, cilantro, and jalapeno. Serve with sliced limes to squeeze on top and extra crema on the side.





Cutler Rath, Cash Dykes, Harrison Toombs, Fox Toombs, Annie Vance Toombs, Lila Nolan, Kate Nolan, Emmie Nolan, Carver Rath, Millie Vance Rath, and Jett Dykes



**DON'T LEARN HISTORY.  
FEEL IT.**

History is more than a timeline—it is a thread woven through all of our lives. Pick up that thread at the Museum of Mississippi History and the Mississippi Civil Rights Museum. Plan your visit today at [twomississippimuseums.com](http://twomississippimuseums.com).



**TWO MISSISSIPPI MUSEUMS**  
 MUSEUM OF MISSISSIPPI HISTORY  
 MISSISSIPPI CIVIL RIGHTS MUSEUM

42<sup>ND</sup> ANNUAL PHILADELPHIA SERTOMA CLUB  
**Heart O' Dixie**  
**TRIATHLON '21**

THE PHILADELPHIA SERTOMA CLUB THANKS OUR MANY VOLUNTEERS AND SPONSORS FOR THEIR SERVICE AND SUPPORT ON THIS YEAR'S HEART O' DIXIE TRIATHLON.

 PHILADELPHIA SECURITY INSURANCE	 Since 1977 General Store Newmarket, MD	 The Citizens Bank
 NESHOPA GENERAL	 YATES	 Sta-Home Home Health • Hospice
 TRIPLE COMMER LOGGING INC.	 PHILADELPHIA PAC ATHLETIC CLUB	 AIRPARK FAMILY DENTISTRY
 Performance Therapy Comprehensive care • 24/7 on-call treatment • Proven results	 ALFA INSURANCE	 THE JUNCTION CONVICTIONLESS REFORMED





Shay Darby, Anthony Steele and Zane Hodge placed first overall in the team relay at the Heart O' Dixie Triathlon.



Carolyn Lohman, Bill Johnson, Jordan Rives, Jordan Lohman, Cristie Rives, Jason Rives and Justin Rives hang out in Pleasant Hill.

# Lost & Found

The Mississippi Treasury has millions of dollars in our lost and found box.

See if any of this unclaimed money belongs to you!

1. Visit [Treasury.MS.gov](https://Treasury.MS.gov)
2. Type in your name  
*(or the name of a family member, business, or local organization)*
3. Click **GO!**



#### WHAT IS UNCLAIMED MONEY?

It is sometimes very difficult for banks, credit unions, utilities, and even retail stores to find the rightful owners of money. People move, families lose touch, and sometimes the money just sits there. After five years, these entities are required to turn that money over to the state to find the rightful owners, which is what our Unclaimed Money team does.



Scan to Search







Collins and Nora Edwards help decorate Camper 417.



Ellie Jane Warren and Caroline Reese Hancock catch up after missing out last year.



Brynlee Jones, Emery Floyd and Natalie Floyd.

*Wishing all a safe  
and happy Fair!*







Collins Edwards, Jason Edwards, Nora Edwards and Deidre Edwards show their support for Mississippi State by wearing maroon and white.



Ally and Joy Byrd had fun at the rodeo this year.

# You're Invited!

Special Occasions invites you to attend the Ribbon Cutting Ceremony/Building Opening to be held on Saturday, August 21, 2021, at 1:00PM to celebrate twenty-five years in the formal-wear business, and for the dedication of the new building location in Philadelphia, 1034 Holland Avenue.

Special Occasions' new building has a beautiful bridal showroom area where bridal gowns are featured in the new Bridal Boutique Gallery. Our passion is to feature many great couture line for pageants and prom. The shoppe also has its own hair and makeup salon, tanning salons, little girls gowns in the Cinderella Room with accessories to complete.

Special Occasions will open a second location in Newton, MS after Labor Day to better accommodate our shoppers. Special Occasions continues to be the #1 formal-wear shoppe for bridal, prom, pageant and children's gowns for in-state and out-of-state customers.

Say YES to the Dress!



Special Occasions will give away FREE Special Occasion t-shirts to those who visit our new shop, enjoy refreshments, after the ribbon cutting ceremony, and sign-in to tour our newly renovated building.

**25**  
ANNIVERSARY

BRIDAL • PAGEANT • PROM  
HAIR SALON • TANNING  
**601-656-7474**  
PHILADELPHIA & NEWTON





Ruthie Donald, Evie Shepherd and Remi Donald of Cabin 333 play together.



Caleb Mayfield enjoys a cool treat with his friends Evie and Molly Cohen.



# Good Luck Abby!

We love you and are proud of you!  
Love, Grammie and Granddaddy.

Contestant #12





Happy Hollow filled with families, games and flags.

(L to R): Tinsley Rounsaville (5),  
Ty Rounsaville (3), Mary Clayton Byars (4),  
and Ava James Byars (9)



From our family to yours, we hope you have a safe and happy Fair!

**Byars FURNITURE**  
ESTABLISHED IN 1953 | PHILADELPHIA MISSISSIPPI

319 BYRD AVENUE • 601-656-1802 • WWW.BYARSFURNITURE.COM



# NESHOBA MEDICAL ASSOCIATES

# YOUR HEALTH IS OUR PRIORITY



INTERNAL MEDICINE

DWIGHT KEADY, MD

SHELLEY DARBY, FNP-C



CLINIC MANAGEMENT



PEDIATRIC MEDICINE



ANN RICHARDSON, CNFP

JULIA RILEY, MD

LARAIB TABBA, MD



LAB - RADIOLOGY - RECEPTION - HOUSEKEEPING



FAMILY MEDICINE

HEATHER CANNON, MD

HAILEY THOMPSON, DO



Internal Medicine \ 601.656.6116  
Family Medicine \ 601.656.1001  
Pediatric Medicine \ 601.656.9900



All services located on the NG Campus  
in the Medical Pavilion  
513 E. Hospital Road \ Philadelphia, MS 39350

Neshoba County General Hospital - Nursing Home complies with applicable Federal civil rights laws and does not discriminate on the basis of race, color, national origin, age, disability, or sex.  
ATENCIÓN: si habla español, tiene a su disposición servicios gratuitos de asistencia lingüística. Llame al (601) 663-1200.  
CHÚ Ý: Nếu bạn nói Tiếng Việt, có các dịch vụ hỗ trợ ngôn ngữ miễn phí dành cho bạn. Gọi số (601) 663-1200.

Dedicated to Excellence in Healthcare

[www.neshobageneral.com](http://www.neshobageneral.com)







Rhonda Perdue, Tim Perdue and Sandy Taylor have been coming to the Fair for over 50 years. They live in Louisiana and Georgia.



Lucy McGee, 5, and Lee McGee return from shopping at the Flea Market.



**Need a break from the Fair?**

**Weekly or Day Passes Available.**

Raquetball courts, steam rooms, 4 weight rooms, smoothie bar and more!



113 LAKESIDE DR. PHILADELPHIA  
**601-650-0075**  
philadelphiaathleticclub.net



May God bless you and your family during the Fair.



150 HOSPITAL ROAD • PHILADELPHIA, MS  
601.656.4343 • PRINCEOIL.COM



# COWBOY CHURCH AT THE NESHOPA COUNTY FAIR

JULY 25, 2021 • 9:30AM • IN THE SHOWBARN

With Chaplin Edward Smith, leading Jockey David Alvarez, and testimonies from local people. Prayer for all trainers and jockeys. And much more!

*Prophetic artwork by Amy Rylander.*



Chaplain, Edward Smith



Jockey, David Alvarez

**Bring lawn chairs!**



**Bring lawn chairs!**

## GLOBAL VISION FAITH CHURCH

1006 EAST MAIN STREET • PHILADELPHIA, MS 39350 • (601) 389-7757 • [GLOBALVISIONFC.COM](http://GLOBALVISIONFC.COM)



# Meet your Fair neighbor

Cabin #353

- **Where are y'all from?** We were both born and raised in Neshoba County.
- **What is your favorite ride on the Midway?** The Sizzler.
- **What is your favorite Fair meal?** Chicken on the stick and funnel cakes!
- **What's one thing you especially look forward to at the Fair?** The concerts and the horse races.
- **How many people stay in your cabin during the week?** Only 4.

– By Natalie Breazeale and Riley Goforth



Natalie Breazeale and Riley Goforth



The Neshoba County Fair has been a tradition & destination for making memories since 1889.  
***Enjoy your time at the fair!***

**FIRST FINANCIAL BANK**  **In the Business of YOU.**

510 Hwy 35 South • Carthage, MS 39051 | (601) 267-6657 | [www.ffb1.com](http://www.ffb1.com) | Member FDIC





Collins Edwards, Jason Edwards, Nora Edwards and Deidre Edwards show their support for Mississippi State by wearing maroon and white.



Ally and Joy Byrd had fun at the rodeo this year.

# You're Invited!

Special Occasions invites you to attend the Ribbon Cutting Ceremony/Building Opening to be held on Saturday, August 21, 2021, at 1:00PM to celebrate twenty-five years in the formal-wear business, and for the dedication of the new building location in Philadelphia, 1034 Holland Avenue.

Special Occasions' new building has a beautiful bridal showroom area where bridal gowns are featured in the new Bridal Boutique Gallery. Our passion is to feature many great couture line for pageants and prom. The shoppe also has its own hair and makeup salon, tanning salons, little girls gowns in the Cinderella Room with accessories to complete.

Special Occasions will open a second location in Newton, MS after Labor Day to better accommodate our shoppers. Special Occasions continues to be the #1 formal-wear shoppe for bridal, prom, pageant and children's gowns for in-state and out-of-state customers.

Say YES to the Dress!



Special Occasions will give away FREE Special Occasion t-shirts to those who visit our new shop, enjoy refreshments, after the ribbon cutting ceremony, and sign-in to tour our newly renovated building.

**25**  
ANNIVERSARY

BRIDAL • PAGEANT • PROM  
HAIR SALON • TANNING  
**601-656-7474**  
PHILADELPHIA & NEWTON





William, Weston, and Walter Moorehead wear their new shirts they bought from the Flea Market.



Leigh Wisin, Emma, Mims, Wat, Cooper, Leighton, Katie — all from Madison — enjoy their time at the Fair.

# IMPROVING YOUR QUALITY OF LIFE

At Total Pain Care, we believe that a comprehensive, interdisciplinary approach to pain management is essential to the evaluation and treatment of patients with acute, chronic and cancer pain syndromes. Our goal is to reduce suffering, increase function and productivity, while promoting independence and a higher quality of life for our patients. We are committed to treat patients with the highest standard of care available. Our physicians specialize in pain management and are trained to provide treatment across the full pain continuum, from the least invasive treatment to complex interventional therapies.

### CONDITIONS WE TREAT

BACK & SPINE PAIN | BODY PAIN

CANCER RELATED PAIN | HEAD & NECK PAIN | HIP & KNEE PAIN

NERVE PAIN | SHOULDER & ARM PAIN

Visit our website for additional information on common conditions we treat and many of our treatment options that are available. [www.totalpaincare.org](http://www.totalpaincare.org)



Dr. Charles C Martin, IV



Dr. Eric J. Pearson



Dr. Kenneth E. Staggs, Jr.



**CALL 601-482-9224 TO SCHEDULE AN APPOINTMENT**





**Neshoba Outpatient Therapy \ 601.663.1482**  
**205 E. Hospital Road \ Philadelphia, MS 39350**

Neshoba County General Hospital – Nursing Home complies with applicable Federal civil rights laws and does not discriminate on the basis of race, color, national origin, age, disability, or sex. **ATENCIÓN:** si habla español, tiene a su disposición servicios gratuitos de asistencia lingüística. Llame al (601) 663-1200. **CHÚ Ý:** Nếu bạn nói Tiếng Việt, có các dịch vụ hỗ trợ ngôn ngữ miễn phí dành cho bạn. Gọi số (601) 663-1200.



# YOUR HEALTH IS OUR PRIORITY



*Dedicated to Excellence in Healthcare*

[www.neshobageneral.com](http://www.neshobageneral.com)



**Neshoba Inpatient Therapy \ 601.663.1485**  
**Located inside Neshoba County Nursing Home**  
**1001 Holland Ave. \ Philadelphia, MS 39350**

Neshoba County General Hospital – Nursing Home complies with applicable Federal civil rights laws and does not discriminate on the basis of race, color, national origin, age, disability, or sex. **ATENCIÓN:** si habla español, tiene a su disposición servicios gratuitos de asistencia lingüística. Llame al (601) 663-1200. **CHÚ Ý:** Nếu bạn nói Tiếng Việt, có các dịch vụ hỗ trợ ngôn ngữ miễn phí dành cho bạn. Gọi số (601) 663-1200.



# YOUR HEALTH IS OUR PRIORITY



*Dedicated to Excellence in Healthcare*

[www.neshobageneral.com](http://www.neshobageneral.com)



# Versatility. It runs in the family.



## Welcome back to the Neshoba County Fair!

M Series 579-141.4 HP Wide range of attachments



Stop In today to demo the do-it-all Kubota M Series tractors.

- Powerful and efficient engines for cleaner emissions and better fuel economy
- Ergonomic design for all-day comfort
- Electrohydraulic shuttle transmission for fast, easy shifting

Together we do more.

## Windham Tractor & Implement Co

592 E. Main Street

Philadelphia, Mississippi 39350

601.656.2761

[KubotaUSA.com](http://KubotaUSA.com)

© Kubota Tractor Corporation, 2020. This material is for descriptive purposes only. Kubota disclaims all representations and warranties, express or implied, or any liability from the use of this material. For complete warranty, disclaimer, safety, incentive offer and product information, consult your local Dealer or go to [KubotaUSA.com](http://KubotaUSA.com).





Kyleigh Laughlin



Anna Caroline  
Stephens



Jade Battle



Mallory Chunn



Zoey Bell



Lauren Pope



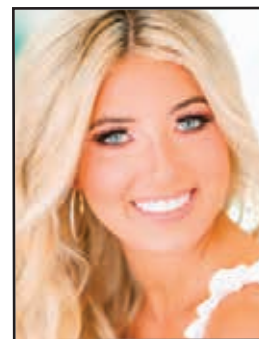
Sydney Sisson



Marlee-Keeton  
Pierce



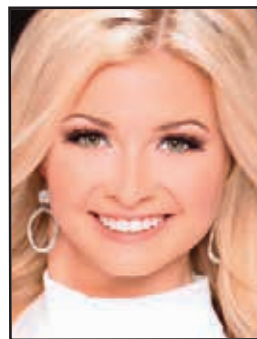
Madison Delancy



Piper Fulton



Khloe Cockerham



Abby Seale



Madilyn Hall

# 13 competing for title of Miss Neshoba County

## By Audrey Hall

Thirteen contestants will compete for the title of Miss Neshoba County Fair on Monday night at the Neshoba County Fair.

Pageant Director Jennifer Bounds said a few more contestants are participating compared to recent years and the contest will feature a few changes this year.

"I have 13 outstanding contestants,"

Bounds said. "We will bring back the modeling of Fair Wear and the girls will introduce themselves and tell what their favorite part of the Fair is," Bounds said. "They will take part in interviews, an opening number and evening gown competition also. We are no longer a preliminary pageant for Miss Mississippi."

The Pageant is at 8 p.m. today at the Grandstand.

Here is a look at the contestants:

• **Kyleigh Laughlin** is the 18-year-old daughter of Angela and David Turk. She is a member of Southside United Methodist Church. Kyleigh was involved in FFA, played soccer and was a Mississippi Scholar as well as an honor roll student at Neshoba Central.

Kyleigh is a member of the National Barrel Horse Association and High School Horse Association. She is a 2 time state qualifier for the 4H horse show and pistol

shooting competitor. Kyleigh plans to attend East Central Community College and pursue a degree in nursing.

• **Anna Caroline Stephens** is the 18-year-old daughter of Amy Stephens and Don Grantham, Jr. She is a member of Bethsadia Baptist Church. Anna Caroline was involved in many clubs while in high school Bible, Crown, Science, BETA, FFA,

See **PAGEANT**, page 2E



# MISS NESHOPA COUNTY FAIR CONTESTANTS

## Pageant

Continued from page 1E

### FBLA and Art.

She was a Special Distinction graduate, Mississippi Scholar and served Neshoba Central High School Senior Class as Homecoming Maid. She enjoys shopping in her free time and volunteering work at her church.

Anna Caroline plans to attend East Central Community College and then transfer to Mississippi University for Women to pursue a BS degree in Nursing and become a family Nurse Practitioner.

• **Alexa Jade Battle** is the 19-year-old daughter of Scott and Christy Battle. She is a member of Grace Baptist Church. Jade enjoys helping her grandfather train his horses for harness racing.

She is a member of the praise band at her church and her senior year of high school had the honor of singing with our own Marty Stuart. She was a cheerleader at East Central Community College and recently graduated with an Associates of Art degree. Jade enjoys dancing and styling outfits for her friends and family in her free time.

This Fall Jade will be attending Mississippi State University to pursue a Bachelor's and Master's Degree in Fashion Design and Merchandising.

• **Mallory Chunn** is the 17-year-old daughter of Latisha Clark and Bill Chunn. She is a member of Sandtown United Methodist Church.

Mallory is involved in cheerleading, powerlifting, BETA and Mu Alpha Theta Clubs. She is a Special Honor Roll student and serves on the Student Council as Vice-President.

She was a member of the 8-time State Champion Neshoba Central softball team. Mallory is a gymnastics instructor and has been selected for 4 years as an All-American Cheerleader.

Mallory was first alternate and overall fitness and talent winner in the Distinguished Young Woman program in Neshoba County.

Mallory hopes to cheer at Mississippi State University and pursue a degree in criminal justice and then attend law school with a goal of working for the FBI.

• **Zoey Raine Bell** is the 18-year-old daughter of Scotty and Memory Bell. She is a member of Trinity Baptist Church. She was an honor roll student, 10th grade homecoming maid and Neshoba Central's

Most Beautiful her senior year.

She volunteers her time at the Baptist Center each summer. Zoey enjoys spending time with her family. In her free time she enjoys her little sisters swimming, playing in makeup or riding the golf cart around her community with them.

She enjoys helping whip up her Grannas famous banana budding as well as finds pleasure in hunting and fishing with her PaPaw.

She has a part-time job at Kademi and says it is more than a job because of the friendships formed. Zoey plans to attend East Central Community College and pursue a degree in nursing with plans of working as a neonatal nurse.

• **Lauren Pope** is the 18-year-old daughter of Jody and Sarah Pope. She is a member of Macedonia Revival Center. She participated in HOSA placing 2nd at the State convention in competition and was a member of the National Honor Society at Neshoba Central High School.

She was recently selected and awarded as a recipient of a W.G. Yates Scholarship. Lauren enjoys spending time with family and friends. She enjoys shopping and spending time outside.

She participates in community service visiting nursing homes, passing out candy to local daycares and even taking temperature checks at school for COVID 19 screening. Lauren plans to attend East Central Community College and plans on majoring in Biology to one day become a Forensic Pathologist.

• **Sydney Grace Sisson** is the 17-year-old daughter of Jim and Maria Sisson. She is a member of Cook's Chapel Methodist Church.

Sydney is a captain of her Leake Academy cheer squad, a BETA club member, and for the past 2 years received top 5 honors in the speech competition at State Beta Convention.

She was elected a homecoming maid the last 3 years. She is in the 30plus ACT score club and participated in Leadership Neshoba.

Sydney is a member of the Senior Christian organization and helps with preparing blessing boxes as well as serves the community with the Open Arms Organization.

After graduating, Sydney plans to attend Mississippi State University pursuing a degree in biology, then onto the University of Mississippi Medical Center for a career in dermatology.

• **Marlee-Keeton Pierce** is the 18-year-old daughter of Barry and Catina Brantley. She is a member of Good Hope Baptist

Church.

While in high school she was a member of the National Honors Society, BETA national winner in trading pins, FBLA, Bible, Science, and History Clubs. Marlee-Keeton was on the Neshoba Central High School girls powerlifting team, a Special Distinction student all four years of high school, a Mississippi Scholars Graduate and works part-time at Steve's on the Square.

Marlee-Keeton plans to attend East Mississippi Community College at Mayhew and then transfer to Mississippi University for Women to pursue a bachelor's degree in nursing.

• **Madison Avery Delancey** is the 19-year-old daughter of Heather and John McCarty. She attends New Bethel Baptist Church. She is involved in Phi Beta Lambda and serves as captain of the Centralettes dance team at East Central Community College.

She has been awarded the Thomas W. Thrash Memorial Scholarship and James E. Land Memorial Scholarship. Madison is involved in her church assisting with children's classes each week. Madison plans to further her education at the University of Southern Mississippi after graduating from East Central Community College pursuing a degree in Elementary Education.

• **Piper Lane Fulton** is the 18-year-old daughter of Jason and Angela Fulton. She is a member of First United Methodist Church Philadelphia.

At Neshoba Central, Piper was a six-year cheerleader and a member of BETA, FBLA, Bible, Science and History clubs.

In the community, Piper is a volunteer for Rise against Hunger, Open Arms, Love Out Loud, Stuff the Bus, and God's Closet. She is a member of Donate Life Mississippi, East Mississippi Hub for volunteers and an ambassador for Crowns for a Cause.

Piper works at Cheer Etc as a gym assistant and enjoys traveling and exercising. Piper was a Special Distinction Honor graduate and Captain her senior year of the cheerleading team. She was also a UCA and NCA All-American cheerleader. She will be a cheerleader this fall at ECCC. Piper plans to attend East Central Community College and pursue a degree in nursing.

• **Khloe Elyse Cockerham** is the 19-year-old daughter of Brent and Christy Cockerham and Wayne and Kelly Williams.

She is a member of the First Baptist Church of Union. Khloe enjoys spending

time with her seven younger siblings, exercising, whitewater rafting, water skiing and miniature gold. She completed the "Muddy Princess" a memorable fun mud obstacle course. She has traveled on mission trips to help with Operation Smile in Haiti and Operation Christmas Child in Texas.

She was Neshoba County's Outstanding Teen 2019, participated in Leadership Neshoba and served as senior class vice president at Union High School.

Khloe is currently employed at Union Mercantile Company and recently started a work study in the Financial Aid department at East Central Community College.

At East Central, she is a member of the Warrior Corp, Sigma Sigma Mu Ta, and Students for Life. Khloe plans to graduate with an Associate's degree from East Central Community College and transfer to Mississippi College to complete a bachelor's degree in pre-optometry. She will then apply to Southern School of Optometry in Memphis, Tenn., to become an optometrist and come home to serve her community.

• **Abby Seale** is the 20-year-old daughter of Steve and Tina Seale. She is a member of Cook's Chapel United Methodist Church. Abby is a member of the MSU Student Association-serving as Academic Affairs Director and Freshman Council, she serves on the New Maroon Camp programming staff, is a member of Kappa Delta sorority, a SET leader mentor, MSU Fashion Board Model and is a member of the Lambda Sigma Honor Society.

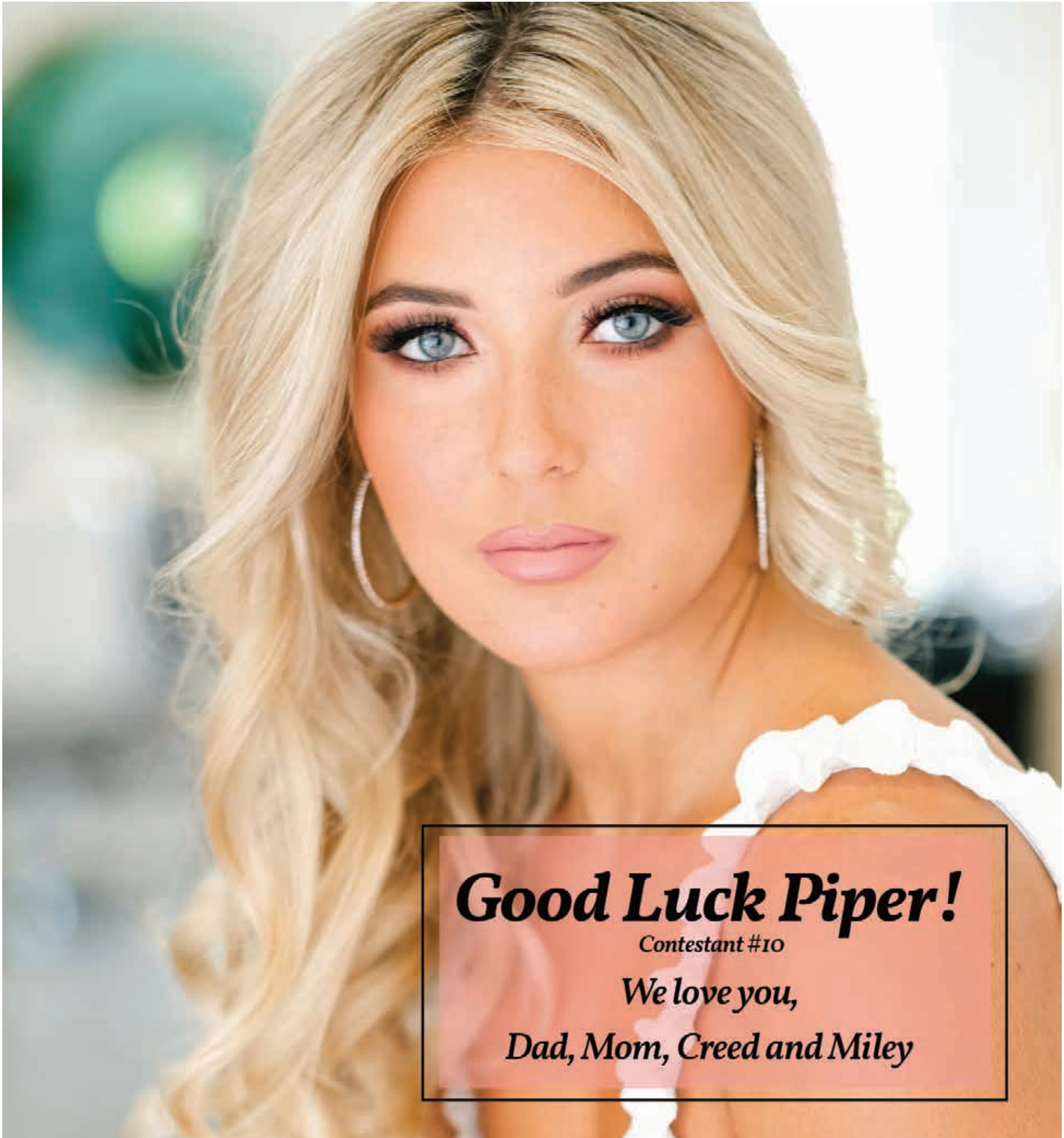
She enjoys traveling, hiking and camping in National Parks, and creating artwork. Abby is a Mississippi State University President's List Scholar, Phi Kappa Phi honor society member, and placed in the Top 10 in the state competition as Neshoba County's Distinguished Young Woman. Abby plans to graduate from Mississippi State University with a Bachelor's Degree in Kinesiology and pursue a doctorate in Physical Therapy.

• **Madilyn Joe Hall** is the 19 year-old daughter of Jason and Jennifer Hall. She is a member of Hope Baptist Church.

Madelyn enjoys cheerleading, gymnastics, swimming and of course attending the Neshoba County Fair. She is a member of the Holmes Mosaic Club and received a cheerleading and ACT scholarship to Holmes Community College. She has been selected as the Most Valuable Tumbler and received the Scholar Athlete Award.

After graduating from Holmes she plans to attend Mississippi State University and pursue a degree in kinesiology and transfer to the University of Mississippi Medical Center for a career in occupational therapy.





***Good Luck Piper!***

*Contestant #10*

*We love you,*

*Dad, Mom, Creed and Miley*





**Wishing you the best, Sydney!**

*We love you - Momma, Daddy,  
John Forrest, Adrienne &  
all your friends and family in Cabin 887*





*Good Luck  
Abby!*

*We love you!*

*Mom, Dad  
and Miriam*

*Contestant #12*

*Good Luck!*

*Marlee-Keeton Pierce  
Contestant # 8*

*We Love You,  
Paw Paw & Juju*







Ruthie Donald, Evie Shepherd and Remi Donald of Cabin 333 play together.



Caleb Mayfield enjoys a cool treat with his friends Evie and Molly Cohen.



# Good Luck Abby!

We love you and are proud of you!  
Love, Grammie and Granddaddy.

Contestant #12



# WELCOME BACK!

RYAN, ASPEN, REECE AND EVERYONE HERE AT **MORGAN TILE CARPET ONE**  
HOPE YOU AND YOUR FAMILY HAVE AN AMAZING 2021 FAIR!



**TURNING HOUSES INTO HOMES SINCE 1938!**



909 B STREET MERIDIAN, MS 39302. 601-485-8174. MONDAY THROUGH FRIDAY, 7:30-4:30



@MORGANTILE.CARPETONE



# HAVE A SAFE & BLESSED FAIR!

*With Love From The Boatner Family*



JODI | MICAH | JOSEPH | KARI | SCOTT | HANNAH | MATTHEW | JOHN SCOTT | ALLISON | WILLIAM

SCAN HERE  
TO DOWNLOAD  
OUR  
MOBILE APP



SCOTTBOATNER.COM | FACEBOOK.COM/SBMINT | YOUTUBE.COM/C/SCOTTBOATNER





Cousins Briggs Rushing and Brantley Ingram of Cabin 750 cool off from the heat with popsicles on the porch.



Cousins Ryleigh and Neely Wolverton, Jack Haggard, Luke and Rhett Powell bond on the porch.



Welcome back to the FAIR!

**YATES**  
BUILDING SUPPLY

406 SOUTH LEWIS AVENUE • PHILADELPHIA, MS 39350 • 601.656.3065



# YOUR HEALTH IS OUR PRIORITY



PAIN MANAGEMENT

AZHAR PASHA, MD



NESHOBA OUTPATIENT INFUSION & ONCOLOGY



NESHOBA SLEEP CENTER

KARY WHITEHEAD, MD



NESHOBA WOUND CARE CENTER

GRANT GUILD, MD



- Neshoba Sleep Center \ 601.663.1332\1335
- Neshoba Wound Care Center \ 601.663.4224
- Neshoba Pain Management Center \ 601.389.1552
- Neshoba Outpatient Infusion and Oncology \ 601.389.1553



All services located on the NG Campus  
1001 Holland Avenue \ Philadelphia, MS 39350

Neshoba County General Hospital – Nursing Home complies with applicable Federal civil rights laws and does not discriminate on the basis of race, color, national origin, age, disability, or sex.  
ATENCIÓN: si habla español, tiene a su disposición servicios gratuitos de asistencia lingüística. Llame al (601) 663-1200.  
CHÚ Ý: Nếu bạn nói Tiếng Việt, có các dịch vụ hỗ trợ ngôn ngữ miễn phí dành cho bạn. Gọi số (601) 663-1200.

Dedicated to Excellence in Healthcare

[www.neshobageneral.com](http://www.neshobageneral.com)





# YOUR COMPLETE GENERATOR SOLUTION

DESIGNED | ENGINEERED | MANUFACTURED  
CLINTON, MISSISSIPPI

A Taylor Power standby generator is ready within seconds of a power outage - reassuring you that your business or home is protected.

[www.taylorpower.com](http://www.taylorpower.com)

947 Industrial Park, Dr. Clinton, MS 39056  
601.922.4444

Commercial | Residential | Agriculture | Mobile





# Dr. Nicole F. Harrison

## FAMILY DENTISTRY

UNION, MS

*Welcomes all of you back to the Fair!*



COMMITTED TO GIVING YOU AND YOUR FAMILY SOMETHING TO SMILE ABOUT.



**Dr. Nicole Harrison, DMD**  
**FAMILY DENTISTRY**

GENERAL DENTISTRY | WHITENING | BOTOX

25043 HIGHWAY 15 • UNION, MS 39365 • (601) 774-9949 • NICOLEHARRISONDMD.COM



**GlassWorx would like to  
welcome you to the return of  
THE NESHOPA COUNTY FAIR!**

**We wish you all a safe and  
happy week!**



**We Specialize in:** Energy Efficient Vinyl Replacement Windows, Custom Mirrors,  
Standard & Custom Shower Enclosures, Sun Rooms, Screen Rooms, Residential  
Screens, Beveled Glass, Patio Canopy Covers, Hollow Metal Doors,  
Commercial Door Locks & Closers, Screens, Solar Screens

1163 Weyehaeuser St. • Philadelphia, MS • 601.389.2020 • [www.glassworxllp.com](http://www.glassworxllp.com)  
Open Monday Thru Friday – 8am – 5pm



**JOHNE. STEPHENS CHAPEL  
FUNERAL SERVICES**



# *Square Peg* MINI MALL

*Family-owned*      *Featuring Square Peg Furniture*




**NEW ALL SOLID WOOD FURNITURE • LOW OVERHEAD, LOW PRICES • HOME DÉCOR  
NEW LADIES AND CHILDREN'S BOUTIQUE CLOTHES • JEWELRY • COWHIDE BAGS**

**335 W. MAIN STREET • PHILADELPHIA, MS • 601.416.6624**

**907 CARTER AVENUE, SUITE #2 • PHILADELPHIA, MS • 601.568.5222**

**• SQUAREPEGMINIMALL.COM**

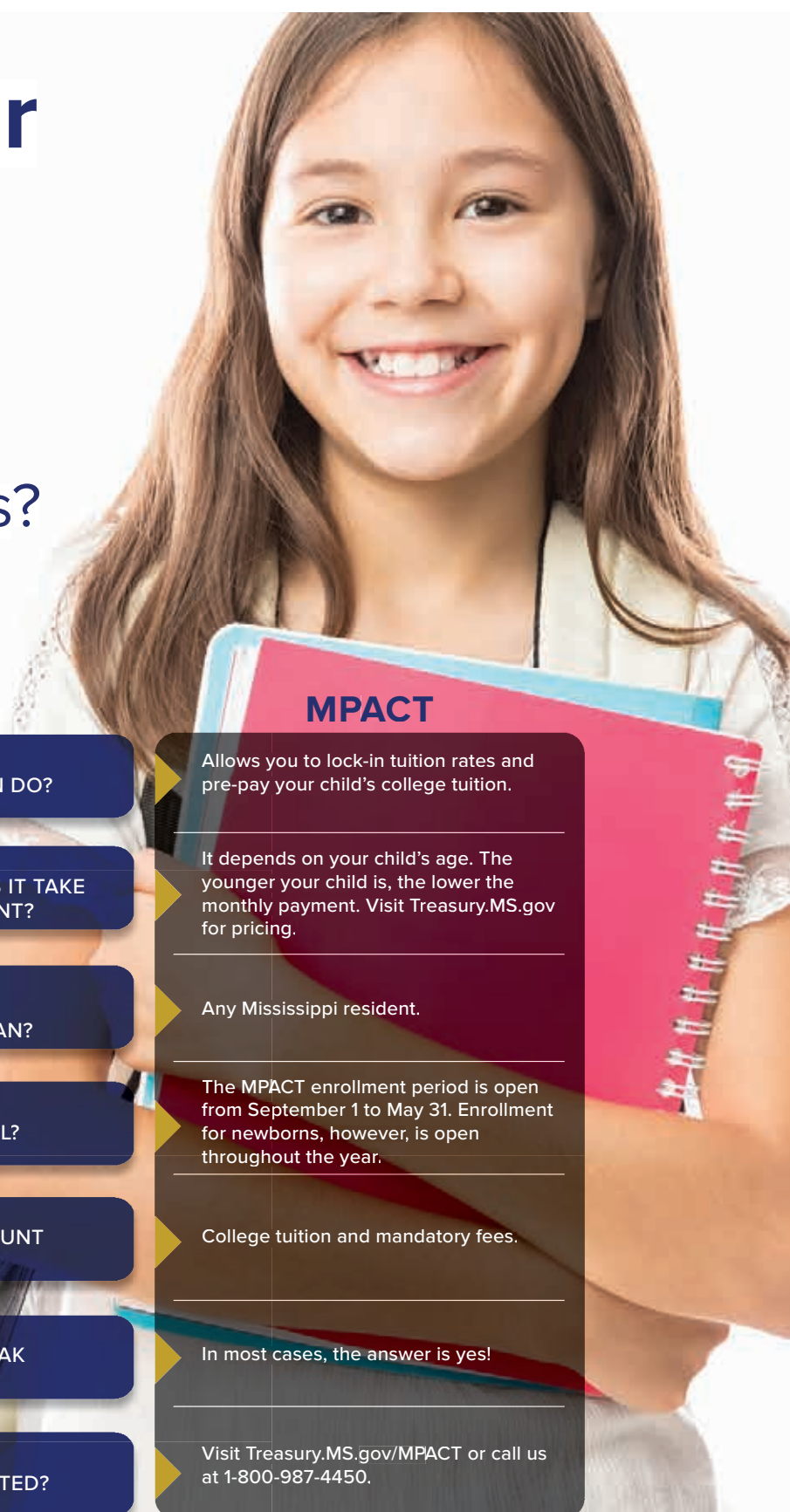
MEMBER OF THE BETTER BUSINESS BUREAU  squarepegminimall



# Your third grader is halfway to college.

Are you halfway toward your college savings goals?

The Mississippi Treasury is here to help with two great plans!



## MACS

Allows you to open a tax-advantaged savings account that can be used for your child's education.

As little as \$25!

Almost anyone. Parents, grandparents, relatives, and friends can open an account and make contributions.

Anytime!

Tuition, books, supplies, and certain room and board expenses, as well as elementary and secondary tuition expenses for younger students.

In most cases, the answer is yes!

Visit [Treasury.MS.gov/MACS](https://Treasury.MS.gov/MACS) or call us at 1-800-987-4450.



WHAT DOES THIS PLAN DO?



HOW MUCH MONEY DOES IT TAKE TO OPEN AN ACCOUNT?



WHO CAN START AN ACCOUNT OR PLAN?



WHEN CAN I ENROLL?



WHAT CAN THE ACCOUNT BE USED FOR?



DO I GET A TAX BREAK FOR INVESTING?



WHERE DO I GET STARTED?

## MPACT

Allows you to lock-in tuition rates and pre-pay your child's college tuition.

It depends on your child's age. The younger your child is, the lower the monthly payment. Visit [Treasury.MS.gov](https://Treasury.MS.gov) for pricing.

Any Mississippi resident.

The MPACT enrollment period is open from September 1 to May 31. Enrollment for newborns, however, is open throughout the year.

College tuition and mandatory fees.

In most cases, the answer is yes!

Visit [Treasury.MS.gov/MPACT](https://Treasury.MS.gov/MPACT) or call us at 1-800-987-4450.

*This comparison is a brief summary of MPACT and MACS plans and is not a substitute for College Savings Mississippi contract documents. Prospective purchasers are urged to review those documents carefully.*







**JASON LOVERN**  
REALTOR  
601.416.1013

# HILL

REAL ESTATE GROUP, LLC

RESIDENTIAL • COMMERCIAL  
LOTS & ACREAGE • PROPERTY MANAGEMENT



**PAMELA BELK LOVERN**  
REALTOR  
601.720.3405



**10560 ROAD 759**  
PHILADELPHIA | MLS# 20-850 **\$1,650,000**



**10400 COUNTRY LANE**  
PHILADELPHIA | MLS# 21-346 **\$210,000**



**HWY 15**  
PHILADELPHIA | MLS# 21-193 **\$150,000**



**16800 #125 HWY 21 SOUTH**  
PHILADELPHIA | MLS# 19-625 **\$249,900**



**HWY 486**  
PHILADELPHIA | MLS# 20-834 **\$82,500**